

**TEXAS
EDUCATION
AGENCY**

AUSTIN, TEXAS

**Secondary School
Completion and Dropouts
in Texas Public Schools
2001-02**

County Listings

Alphabetic by County

**DEPARTMENT OF
ACCOUNTABILITY
REPORTING AND
RESEARCH**

**DIVISION OF
RESEARCH AND
EVALUATION**

AUGUST 2003

Secondary School Completion and Dropouts in Texas Public Schools 2001-02

County Listings

Alphabetic by County

Project Staff

Mei-Ling Shen
David Lynch
Linda A. Roska

Editorial Staff

Richard Kallus

Division of Research and Evaluation
Department of Accountability Reporting and Research
Texas Education Agency
August 2003

Texas Education Agency

Robert Scott
Chief Deputy Commissioner

Office of Finance and Accountability

Ron McMichael
Deputy Commissioner

Department of Accountability Reporting and Research

Criss Cloudt
Associate Commissioner

Division of Research and Evaluation

Karen Dvorak
Senior Director

Citation. Texas Education Agency. (2003). *Secondary school completion and dropouts in Texas public schools, 2001-02: County listings* (Document No. GE03 601 07). Austin, TX: Author.

Keywords. *Secondary education, high school completion, dropouts, annual dropout rate, longitudinal dropout rate, completion rate, graduation rate, Grades 7-12, Grades 9-12.*

Material in this publication is not copyrighted and may be reproduced. The Texas Education Agency would appreciate credit for the material used and a copy of the reprint.

Additional copies of this document may be purchased using the order form in the back of this publication. Additional information about this report may be obtained by contacting the Texas Education Agency Division of Research and Evaluation by phone at (512) 475-3523, by e-mail to research@tea.state.tx.us, or via the division website at <http://www.tea.state.tx.us/research/>.

Contents

Introduction..... 1

Calculations 3

County Listings 5

 Table 1. Annual Dropout Rates, Grades 7-12, by Student Group, 2001-02: County Listing..... 7

 Table 2. Longitudinal Dropout and Completion Rates, Grades 9-12, by Student Group, Class of
 2002: County Listing 13

 Notes on Tables 1 and 2 31

 Figure 1. Comparing Annual and Longitudinal Dropout Counts at the District or Campus Level 33

References..... 37

Introduction

The listings in this report provide secondary school completion and dropout data at the county level as a supplement to *Secondary School Completion and Dropouts in Texas Public Schools, 2001-02* (Texas Education Agency [TEA], 2003a). This supplement includes annual dropout rates and longitudinal rates for secondary school graduates, General Educational Development (GED) certificate recipients, continuing students, and dropouts. County listings of 2001-02 annual dropout rates and completion/student status rates for the class of 2002 are presented. A schematic is provided illustrating the relationship, at the district or campus level, of annual and longitudinal dropout counts. Supplemental listings at the district and campus levels are available in *Secondary School Completion and Dropouts in Texas Public Schools, 2001-02: Supplemental District Data* (TEA, 2003c) and *Secondary School Completion and Dropouts in Texas Public Schools, 2001-02: District and Campus Listings* (TEA, 2003b).

Calculations

All data used in this report were collected and reported by Texas school districts and charter schools through the Public Education Information Management System (PEIMS) maintained by the Texas Education Agency (TEA). The rate calculations are the same as those used in the Academic Excellence Indicator System (AEIS).

In this report, the annual dropout rate is the percentage of students who dropped out of Grades 7-12 during the 2001-02 school year:

$$\text{annual dropout rate} = \frac{\text{number of dropouts during the school year}}{\text{total number of students served during the school year}} \times 100$$

Dropouts are defined and counted according to the *2002-2003 Public Education Information Management System Data Standards* (TEA, 2002) and *Secondary School Completion and Dropouts in Texas Public Schools, 2001-02* (TEA, 2003a). The total number of students in the denominator is the cumulative number of students in attendance in the county at any time during the school year.

In 1998-99, TEA introduced a new set of longitudinal rates. These rates show the high school outcomes for the members of a Grade 9 cohort of students. Students who transferred out are removed from the cohort. Students who transferred in on grade-level are added to the cohort. The final status of each student is determined the year graduation was expected, or four years after entering Grade 9. The final four outcomes included are: graduated, received a GED certificate, continued high school, or dropped out. As an example, the longitudinal rate for graduates is calculated by dividing the number of students who graduated by the number of students in the cohort:

$$\text{longitudinal rate, graduated} = \frac{\text{number of students graduating by year 4}}{(\text{number of students entering Grade 9}) - (\text{transfers out}) + (\text{transfers in})} \times 100$$

Longitudinal rates for GED certificate recipients, students who continued high school, and dropouts are calculated in a similar manner. The sum of the four rates is equal to 100 percent.

County Listings

Table 1
Annual Dropout Rates, Grades 7-12, by Student Group, 2001-02:
County Listing

Table 1. Annual Dropout Rates, Grades 7-12, by Student Group, 2001-02: County Listing

County	All Students			Rate by Student Group %			
	Dropouts	Total	Rate %	Afr. Am.	Hispanic	White	Econ. Dis.
ANDERSON	22	4,171	0.5	0.9	0.0	0.5	0.6
ANDREWS	4	1,570	0.3	0.0	0.3	0.3	0.5
ANGELINA	68	7,512	0.9	1.2	1.3	0.7	0.9
ARANSAS	12	1,743	0.7	0.0	1.8	0.3	0.4
ARCHER	1	996	0.1	0.0	1.7	0.0	0.5
ARMSTRONG	0	181	0.0	-	0.0	0.0	0.0
ATASCOSA	17	4,085	0.4	0.0	0.5	0.3	0.4
AUSTIN	7	2,590	0.3	0.5	0.6	0.1	0.1
BAILEY	10	711	1.4	0.0	2.2	0.3	1.2
BANDERA	1	1,616	0.1	0.0	0.0	0.1	0.0
BASTROP	50	5,727	0.9	0.8	1.2	0.7	0.9
BAYLOR	1	355	0.3	0.0	0.0	0.4	0.7
BEE	3	2,607	0.1	0.0	0.1	0.1	0.1
BELL	247	22,944	1.1	1.6	1.0	0.8	1.0
BEXAR	1,420	122,142	1.2	1.0	1.4	0.6	1.0
BLANCO	1	778	0.1	0.0	0.5	0.0	0.5
BORDEN	0	95	0.0	0.0	0.0	0.0	0.0
BOSQUE	11	1,564	0.7	1.8	0.4	0.7	0.7
BOWIE	25	7,640	0.3	0.6	0.0	0.2	0.2
BRAZORIA	56	22,418	0.2	0.2	0.3	0.2	0.3
BRAZOS	92	9,736	0.9	1.6	1.7	0.4	1.1
BREWSTER	4	700	0.6	0.0	0.5	0.0	0.3
BRISCOE	0	118	0.0	0.0	0.0	0.0	0.0
BROOKS	4	845	0.5	-	0.5	0.0	0.5
BROWN	12	3,577	0.3	0.0	0.4	0.4	0.2
BURLESON	14	1,637	0.9	0.5	0.7	0.9	0.7
BURNET	21	3,179	0.7	1.7	1.1	0.5	0.8
CALDWELL	12	3,263	0.4	0.3	0.6	0.1	0.2
CALHOUN	3	1,875	0.2	0.0	0.1	0.2	0.1
CALLAHAN	9	1,586	0.6	0.0	0.0	0.6	0.7
CAMERON	420	38,365	1.1	2.9	1.1	0.4	0.8
CAMP	4	1,012	0.4	0.0	0.5	0.5	0.2
CARSON	2	618	0.3	0.0	0.0	0.4	0.0
CASS	2	2,952	0.1	0.1	0.0	0.0	0.1
CASTRO	22	913	2.4	0.0	3.6	0.3	2.1
CHAMBERS	8	2,510	0.3	0.4	0.3	0.3	0.0
CHEROKEE	19	3,555	0.5	0.4	1.1	0.4	0.7
CHILDRESS	0	571	0.0	0.0	0.0	0.0	0.0
CLAY	0	1,047	0.0	0.0	0.0	0.0	0.0
COCHRAN	2	517	0.4	0.0	0.8	0.0	0.3
COKE	1	884	0.1	0.0	0.0	0.3	0.0
COLEMAN	12	821	1.5	0.0	1.1	1.6	0.9
COLLIN	119	43,004	0.3	0.5	0.7	0.2	0.5
COLLINGSWORTH	4	359	1.1	0.0	1.6	0.5	1.1
COLORADO	9	2,081	0.4	0.3	0.9	0.3	0.1
COMAL	65	8,715	0.7	1.5	1.1	0.6	0.7
COMANCHE	18	1,269	1.4	0.0	1.3	1.5	0.7
CONCHO	0	248	0.0	0.0	0.0	0.0	0.0
COOKE	10	2,995	0.3	1.5	0.7	0.2	0.9
CORYELL	27	5,190	0.5	0.3	0.5	0.5	0.3
COTTLE	0	176	0.0	0.0	0.0	0.0	0.0
CRANE	4	481	0.8	0.0	1.2	0.5	0.0
CROCKETT	0	439	0.0	0.0	0.0	0.0	0.0
CROSBY	9	721	1.2	5.6	1.4	0.4	0.9
CULBERSON	5	319	1.6	-	1.6	0.0	0.8
DALLAM	4	751	0.5	0.0	1.0	0.4	0.0
DALLAS	1,694	187,375	0.9	1.1	1.2	0.5	0.9
DAWSON	18	1,397	1.3	1.9	1.6	0.6	0.3
DEAF SMITH	33	1,994	1.7	0.0	2.1	0.6	1.5
DELTA	0	574	0.0	0.0	0.0	0.0	0.0
DENTON	136	34,127	0.4	0.9	0.9	0.3	0.6
DEWITT	12	2,422	0.5	0.8	0.8	0.3	0.2
DICKENS	2	217	0.9	10.0	0.0	0.7	0.8
DIMITT	5	1,150	0.4	0.0	0.5	0.0	0.4
DONLEY	2	332	0.6	0.0	0.0	0.8	0.6

Note. A dash (-) indicates data are not reported to protect student anonymity.

Table 1. Annual Dropout Rates, Grades 7-12, by Student Group, 2001-02: County Listing

County	All Students			Rate by Student Group %			
	Dropouts	Total	Rate %	Afr. Am.	Hispanic	White	Econ. Dis.
DUVAL	7	1,435	0.5	-	0.5	0.0	0.5
EASTLAND	9	1,625	0.6	0.0	0.4	0.6	0.6
ECTOR	254	12,668	2.0	2.2	2.5	1.3	1.7
EDWARDS	2	375	0.5	-	1.0	0.0	0.8
EL PASO	835	73,077	1.1	1.2	1.2	0.9	0.7
ELLIS	50	12,273	0.4	0.7	0.8	0.2	0.5
ERATH	19	2,639	0.7	0.0	1.9	0.4	1.4
FALLS	16	1,500	1.1	1.5	1.9	0.3	1.4
FANNIN	12	2,513	0.5	0.6	0.0	0.5	0.4
FAYETTE	10	1,871	0.5	1.6	0.6	0.4	0.6
FISHER	2	336	0.6	0.0	0.9	0.5	1.2
FLOYD	4	838	0.5	3.0	0.6	0.0	0.7
FOARD	0	163	0.0	0.0	0.0	0.0	0.0
FORT BEND	177	38,586	0.5	0.5	0.9	0.2	0.8
FRANKLIN	2	758	0.3	2.7	0.0	0.2	0.6
FREESTONE	3	1,633	0.2	0.0	0.7	0.2	0.2
FRIO	5	1,387	0.4	0.0	0.4	0.0	0.4
GAINES	9	1,408	0.6	1.7	0.6	0.6	0.6
GALVESTON	170	31,812	0.5	0.5	1.0	0.4	0.8
GARZA	7	775	0.9	0.0	1.9	0.0	1.1
GILLESPIE	6	1,767	0.3	0.0	0.9	0.2	0.4
GLASSCOCK	0	160	0.0	0.0	0.0	0.0	0.0
GOLIAD	0	722	0.0	0.0	0.0	0.0	0.0
GONZALES	3	1,928	0.2	0.4	0.0	0.3	0.2
GRAY	31	1,981	1.6	4.9	1.6	1.4	2.2
GRAYSON	56	9,897	0.6	1.2	0.8	0.5	0.3
GREGG	96	11,478	0.8	1.4	0.8	0.6	0.8
GRIMES	4	2,099	0.2	0.2	0.2	0.2	0.1
GUADALUPE	73	8,091	0.9	1.1	1.4	0.5	0.9
HALE	50	3,775	1.3	2.8	1.6	0.7	1.2
HALL	4	376	1.1	0.0	1.1	1.3	0.9
HAMILTON	1	801	0.1	-	0.0	0.1	0.0
HANSFORD	1	586	0.2	0.0	0.4	0.0	0.0
HARDEMAN	0	435	0.0	0.0	0.0	0.0	0.0
HARDIN	19	5,119	0.4	0.7	0.9	0.3	0.6
HARRIS	3,553	292,927	1.2	1.9	1.6	0.4	1.2
HARRISON	43	6,335	0.7	0.6	2.5	0.5	0.7
HARTLEY	0	161	0.0	-	0.0	0.0	0.0
HASKELL	2	558	0.4	0.0	1.2	0.0	0.6
HAYS	57	10,006	0.6	0.5	0.7	0.4	0.8
HEMPHILL	3	547	0.5	0.0	1.2	0.3	0.0
HENDERSON	25	4,897	0.5	0.0	1.6	0.4	0.5
HIDALGO	857	63,556	1.3	1.3	1.4	0.6	1.0
HILL	27	2,997	0.9	1.4	1.2	0.8	0.8
HOCKLEY	7	2,351	0.3	0.0	0.6	0.0	0.3
HOOD	40	3,871	1.0	0.0	2.6	0.9	1.8
HOPKINS	12	3,038	0.4	0.0	1.4	0.3	0.6
HOUSTON	11	1,809	0.6	0.3	1.7	0.7	1.0
HOWARD	20	2,779	0.7	0.7	1.0	0.5	0.6
HUDSPETH	2	412	0.5	-	0.6	0.0	0.6
HUNT	69	7,342	0.9	1.3	2.2	0.7	1.1
HUTCHINSON	30	2,333	1.3	1.5	2.2	1.0	1.7
IRION	0	190	0.0	0.0	0.0	0.0	0.0
JACK	1	839	0.1	0.0	1.2	0.0	0.4
JACKSON	3	1,588	0.2	0.0	0.4	0.1	0.4
JASPER	25	3,437	0.7	0.7	3.2	0.6	0.5
JEFF DAVIS	0	294	0.0	0.0	0.0	0.0	0.0
JEFFERSON	281	20,586	1.4	1.9	1.4	0.8	1.4
JIM HOGG	0	588	0.0	0.0	0.0	0.0	0.0
JIM WELLS	43	4,234	1.0	0.0	1.1	0.4	1.2
JOHNSON	50	12,716	0.4	0.0	0.7	0.4	0.4
JONES	5	1,472	0.3	0.0	0.3	0.4	0.3
KARNES	10	1,310	0.8	0.0	1.3	0.0	1.2
KAUFMAN	16	8,784	0.2	0.1	0.3	0.2	0.1
KENDALL	7	3,067	0.2	0.0	0.3	0.2	0.6

Note. A dash (-) indicates data are not reported to protect student anonymity.

Table 1. Annual Dropout Rates, Grades 7-12, by Student Group, 2001-02: County Listing

County	All Students			Rate by Student Group %			
	Dropouts	Total	Rate %	Afr. Am.	Hispanic	White	Econ. Dis.
KENT	1	89	1.1	-	0.0	1.3	0.0
KERR	18	3,741	0.5	1.0	0.7	0.4	0.4
KIMBLE	2	399	0.5	-	0.0	0.4	0.7
KING	0	47	0.0	0.0	0.0	0.0	0.0
KINNEY	1	315	0.3	0.0	0.5	0.0	0.6
KLEBERG	30	2,968	1.0	1.1	1.1	0.6	0.8
KNOX	2	454	0.4	1.8	0.0	0.5	0.4
LA SALLE	3	623	0.5	0.0	0.6	0.0	0.5
LAMAR	14	4,095	0.3	0.6	0.0	0.3	0.4
LAMB	15	1,769	0.8	0.8	1.1	0.5	0.4
LAMPASAS	10	1,967	0.5	0.0	1.1	0.4	0.4
LAVACA	1	1,055	0.1	0.0	1.0	0.0	0.0
LEE	0	1,554	0.0	0.0	0.0	0.0	0.0
LEON	8	1,532	0.5	0.5	0.7	0.5	1.0
LIBERTY	40	6,948	0.6	0.3	0.5	0.6	0.3
LIMESTONE	12	2,057	0.6	0.6	0.6	0.6	0.8
LIPSCOMB	2	339	0.6	0.0	1.0	0.4	0.6
LIVE OAK	4	961	0.4	-	0.7	0.2	0.3
LLANO	8	845	0.9	-	0.0	0.9	0.0
LUBBOCK	194	19,845	1.0	1.9	1.6	0.3	0.9
LYNN	3	810	0.4	0.0	0.5	0.3	0.4
MADISON	1	1,106	0.1	0.0	0.0	0.1	0.0
MARION	8	790	1.0	0.9	0.0	1.1	1.0
MARTIN	5	512	1.0	0.0	1.4	0.5	0.0
MASON	0	336	0.0	-	0.0	0.0	0.0
MATAGORDA	11	3,785	0.3	0.7	0.4	0.1	0.4
MAVERICK	83	5,578	1.5	-	1.5	0.0	1.1
MCCULLOCH	0	821	0.0	0.0	0.0	0.0	0.0
MCLENNAN	126	18,494	0.7	0.8	1.0	0.5	0.8
MCMULLEN	0	106	0.0	0.0	0.0	0.0	0.0
MEDINA	26	4,210	0.6	0.0	0.7	0.5	0.6
MENARD	0	249	0.0	-	0.0	0.0	0.0
MIDLAND	140	11,704	1.2	1.9	1.8	0.7	1.3
MILAM	11	2,314	0.5	0.7	0.5	0.4	0.4
MILLS	0	576	0.0	0.0	0.0	0.0	0.0
MITCHELL	3	669	0.4	0.0	0.3	0.6	0.7
MONTAGUE	14	1,679	0.8	0.0	0.6	0.9	1.0
MONTGOMERY	135	29,404	0.5	1.1	0.7	0.4	0.6
MOORE	11	2,126	0.5	0.0	0.7	0.2	0.4
MORRIS	16	1,236	1.3	2.4	3.9	0.4	1.2
MOTLEY	0	95	0.0	-	0.0	0.0	0.0
NACOGDOCHES	26	4,835	0.5	0.5	1.1	0.4	0.5
NAVARRO	52	4,114	1.3	1.7	1.6	1.0	0.9
NEWTON	3	1,211	0.2	0.3	0.0	0.2	0.3
NOLAN	4	1,538	0.3	0.0	0.4	0.2	0.0
NUECES	206	29,214	0.7	0.5	0.8	0.5	0.6
OCHILTREE	8	940	0.9	-	0.6	0.9	0.6
OLDHAM	1	560	0.2	0.0	0.0	0.2	0.3
ORANGE	38	7,877	0.5	1.7	0.7	0.3	0.5
PALO PINTO	8	2,359	0.3	0.0	0.3	0.4	0.2
PANOLA	21	1,858	1.1	1.5	2.0	1.0	2.1
PARKER	30	8,642	0.3	0.7	1.1	0.3	0.5
PARMER	6	1,127	0.5	6.7	0.6	0.2	0.3
PECOS	4	1,694	0.2	0.0	0.3	0.2	0.4
POLK	19	3,337	0.6	0.4	0.2	0.6	0.5
POTTER	105	14,414	0.7	0.5	1.2	0.6	0.7
PRESIDIO	19	893	2.1	-	2.2	0.0	1.9
RAINS	0	769	0.0	0.0	0.0	0.0	0.0
RANDALL	11	3,985	0.3	0.0	0.4	0.3	0.6
REAGAN	0	432	0.0	0.0	0.0	0.0	0.0
REAL	1	177	0.6	0.0	0.0	0.8	1.1
RED RIVER	3	1,266	0.2	0.3	0.0	0.1	0.2
REEVES	6	1,432	0.4	0.0	0.5	0.0	0.5
REFUGIO	6	763	0.8	1.6	0.7	0.7	0.6
ROBERTS	0	101	0.0	0.0	-	0.0	0.0

Note. A dash (-) indicates data are not reported to protect student anonymity.

Table 1. Annual Dropout Rates, Grades 7-12, by Student Group, 2001-02: County Listing

County	All Students			Rate by Student Group %			
	Dropouts	Total	Rate %	Afr. Am.	Hispanic	White	Econ. Dis.
ROBERTSON	7	1,508	0.5	0.4	1.2	0.3	0.4
ROCKWALL	46	5,316	0.9	0.8	1.4	0.8	1.0
RUNNELS	13	1,196	1.1	0.0	2.1	0.4	1.8
RUSK	27	3,680	0.7	0.9	1.3	0.6	0.7
SABINE	2	772	0.3	0.0	0.0	0.3	0.3
SAN AUGUSTINE	3	705	0.4	0.4	0.0	0.5	0.2
SAN JACINTO	12	1,778	0.7	0.6	0.8	0.6	0.3
SAN PATRICIO	35	7,600	0.5	0.0	0.7	0.2	0.6
SAN SABA	0	546	0.0	0.0	0.0	0.0	0.0
SCHLEICHER	3	335	0.9	0.0	1.5	0.0	0.7
SCURRY	12	1,438	0.8	3.0	1.3	0.4	1.3
SHACKELFORD	0	337	0.0	-	0.0	0.0	0.0
SHELBY	17	2,192	0.8	1.2	0.5	0.7	0.6
SHERMAN	2	340	0.6	-	0.8	0.5	0.8
SMITH	129	14,749	0.9	1.4	2.0	0.3	0.9
SOMERVELL	0	901	0.0	0.0	0.0	0.0	0.0
STARR	169	6,545	2.6	-	2.6	6.5	2.1
STEPHENS	11	849	1.3	0.0	1.7	1.2	0.4
STERLING	0	172	0.0	0.0	0.0	0.0	0.0
STONEWALL	0	120	0.0	0.0	0.0	0.0	0.0
SUTTON	1	420	0.2	-	0.4	0.0	0.7
SWISHER	11	922	1.2	1.9	1.4	0.9	1.6
TARRANT	1,078	126,990	0.8	1.1	1.6	0.4	0.7
TAYLOR	76	11,109	0.7	1.1	1.3	0.4	0.8
TERRELL	0	113	0.0	0.0	0.0	0.0	0.0
TERRY	5	1,291	0.4	1.9	0.5	0.0	0.7
THROCKMORTON	0	183	0.0	0.0	0.0	0.0	0.0
TITUS	8	2,566	0.3	0.0	0.6	0.2	0.3
TOM GREEN	108	9,445	1.1	1.0	1.9	0.6	1.3
TRAVIS	547	52,644	1.0	1.3	1.6	0.5	1.2
TRINITY	4	1,190	0.3	0.0	1.4	0.3	0.5
TYLER	4	1,842	0.2	0.8	3.1	0.1	0.4
UPSHUR	10	3,269	0.3	0.8	0.0	0.2	0.4
UPTON	2	428	0.5	0.0	0.5	0.5	0.5
UVALDE	29	2,978	1.0	0.0	1.3	0.1	1.2
VAL VERDE	103	4,634	2.2	0.0	2.4	1.1	2.0
VAN ZANDT	20	4,911	0.4	1.2	0.6	0.4	0.2
VICTORIA	72	7,267	1.0	1.3	1.4	0.5	1.3
WALKER	14	4,053	0.3	0.2	0.7	0.3	0.4
WALLER	17	3,478	0.5	0.7	0.7	0.2	0.1
WARD	4	1,127	0.4	0.0	0.8	0.0	0.8
WASHINGTON	3	2,734	0.1	0.4	0.0	0.0	0.2
WEBB	168	21,301	0.8	0.0	0.8	0.2	0.7
WHARTON	8	4,107	0.2	0.5	0.2	0.1	0.5
WHEELER	1	467	0.2	0.0	0.0	0.3	0.0
WICHITA	77	10,488	0.7	1.0	1.3	0.6	0.8
WILBARGER	4	1,584	0.3	0.0	0.6	0.1	0.2
WILLACY	56	2,192	2.6	0.0	2.7	0.0	1.6
WILLIAMSON	136	30,329	0.4	0.7	1.0	0.3	0.8
WILSON	23	3,521	0.7	1.7	0.9	0.4	0.5
WINKLER	2	815	0.2	0.0	0.2	0.3	0.3
WISE	10	4,175	0.2	0.0	0.3	0.2	0.3
WOOD	4	3,028	0.1	0.0	0.0	0.2	0.2
YOAKUM	6	923	0.7	0.0	0.9	0.3	0.6
YOUNG	6	1,715	0.3	0.0	1.1	0.2	0.8
ZAPATA	30	1,392	2.2	0.0	2.3	0.0	1.8
ZAVALA	21	1,150	1.8	0.0	1.9	0.0	1.5

Note. A dash (-) indicates data are not reported to protect student anonymity.

Table 2
Longitudinal Dropout and Completion Rates, Grades 9-12,
by Student Group, Class of 2002: County Listing

Table 2. Longitudinal Dropout and Completion Rates, Grades 9-12, by Student Group,
Class of 2002: County Listing

County	Final Status	Number	Number in Cohort	Rate %				
				All Students	Afr. Am.	Hispanic	White	Econ. Dis.
ANDERSON	Graduated	479	538	89.0	86.7	76.3	90.8	83.3
	Received GED	14	538	2.6	1.0	0.0	3.3	1.9
	Continued HS	24	538	4.5	6.7	13.2	3.1	8.0
	Dropped out	21	538	3.9	5.7	10.5	2.8	6.8
ANDREWS	Graduated	207	224	92.4	100.0	91.9	92.4	81.1
	Received GED	6	224	2.7	0.0	2.0	3.4	8.1
	Continued HS	7	224	3.1	0.0	5.1	1.7	8.1
	Dropped out	4	224	1.8	0.0	1.0	2.5	2.7
ANGELINA	Graduated	882	1,023	86.2	87.1	78.9	87.6	79.2
	Received GED	17	1,023	1.7	0.0	1.3	2.3	2.2
	Continued HS	72	1,023	7.0	6.2	12.5	6.0	9.4
	Dropped out	52	1,023	5.1	6.7	7.2	4.1	9.2
ARANSAS	Graduated	190	217	87.6	-	85.0	89.3	86.9
	Received GED	13	217	6.0	-	5.0	5.7	4.9
	Continued HS	4	217	1.8	-	1.7	2.1	3.3
	Dropped out	10	217	4.6	-	8.3	2.9	4.9
ARCHER	Graduated	143	151	94.7	-	80.0	95.2	88.5
	Received GED	3	151	2.0	-	0.0	2.1	0.0
	Continued HS	3	151	2.0	-	0.0	2.1	7.7
	Dropped out	2	151	1.3	-	20.0	0.7	3.8
ARMSTRONG	Graduated	27	28	96.4	-	-	96.4	-
	Received GED	1	28	3.6	-	-	3.6	-
	Continued HS	0	28	0.0	-	-	0.0	-
	Dropped out	0	28	0.0	-	-	0.0	-
ATASCOSA	Graduated	464	530	87.5	-	85.6	90.4	83.4
	Received GED	22	530	4.2	-	4.1	4.3	4.5
	Continued HS	26	530	4.9	-	6.0	3.4	7.6
	Dropped out	18	530	3.4	-	4.4	1.9	4.5
AUSTIN	Graduated	337	362	93.1	86.7	85.1	96.3	84.0
	Received GED	5	362	1.4	0.0	0.0	2.0	1.3
	Continued HS	11	362	3.0	8.9	7.5	0.8	8.0
	Dropped out	9	362	2.5	4.4	7.5	0.8	6.7
BAILEY	Graduated	96	105	91.4	-	84.9	98.1	87.5
	Received GED	1	105	1.0	-	1.9	0.0	2.5
	Continued HS	4	105	3.8	-	7.5	0.0	5.0
	Dropped out	4	105	3.8	-	5.7	1.9	5.0
BANDERA	Graduated	162	184	88.0	-	90.0	87.7	84.8
	Received GED	11	184	6.0	-	10.0	5.5	9.1
	Continued HS	10	184	5.4	-	0.0	6.1	6.1
	Dropped out	1	184	0.5	-	0.0	0.6	0.0
BASTROP	Graduated	566	698	81.1	77.1	73.6	84.9	71.2
	Received GED	24	698	3.4	0.0	1.1	5.0	3.5
	Continued HS	68	698	9.7	16.9	15.5	6.2	17.2
	Dropped out	40	698	5.7	6.0	9.8	3.9	8.1
BAYLOR	Graduated	39	45	86.7	-	66.7	90.9	70.6
	Received GED	1	45	2.2	-	11.1	0.0	5.9
	Continued HS	2	45	4.4	-	0.0	6.1	11.8
	Dropped out	3	45	6.7	-	22.2	3.0	11.8
BEE	Graduated	312	357	87.4	88.9	83.1	93.9	80.3
	Received GED	16	357	4.5	11.1	4.7	3.8	6.6
	Continued HS	24	357	6.7	0.0	11.3	0.0	11.8
	Dropped out	5	357	1.4	0.0	0.9	2.3	1.3
BELL	Graduated	2,570	3,087	83.3	80.7	81.0	85.2	76.6
	Received GED	178	3,087	5.8	3.6	6.7	6.8	7.1
	Continued HS	184	3,087	6.0	8.5	7.4	4.0	9.6
	Dropped out	155	3,087	5.0	7.1	5.0	4.0	6.7
BEXAR	Graduated	13,487	17,037	79.2	80.4	75.5	85.6	75.0
	Received GED	756	17,037	4.4	2.7	4.1	5.6	3.9
	Continued HS	1,648	17,037	9.7	10.3	12.0	5.1	12.7
	Dropped out	1,146	17,037	6.7	6.5	8.4	3.6	8.5
BLANCO	Graduated	104	111	93.7	-	89.3	94.7	90.5
	Received GED	3	111	2.7	-	3.6	2.6	4.8
	Continued HS	1	111	0.9	-	0.0	1.3	0.0
	Dropped out	3	111	2.7	-	7.1	1.3	4.8

Note. A dash (-) indicates data are not reported to protect student anonymity.

Table 2. Longitudinal Dropout and Completion Rates, Grades 9-12, by Student Group,
Class of 2002: County Listing

County	Final Status	Number	Number in Cohort	Rate %				
				All Students	Afr. Am.	Hispanic	White	Econ. Dis.
BORDEN	Graduated	9	9	100.0	-	-	100.0	-
	Received GED	0	9	0.0	-	-	0.0	-
	Continued HS	0	9	0.0	-	-	0.0	-
	Dropped out	0	9	0.0	-	-	0.0	-
BOSQUE	Graduated	176	193	91.2	85.7	93.5	90.8	87.0
	Received GED	6	193	3.1	0.0	3.2	3.3	3.7
	Continued HS	4	193	2.1	0.0	3.2	2.0	5.6
	Dropped out	7	193	3.6	14.3	0.0	3.9	3.7
BOWIE	Graduated	895	1,028	87.1	82.9	57.7	89.7	76.7
	Received GED	51	1,028	5.0	4.1	30.8	4.4	11.3
	Continued HS	37	1,028	3.6	4.8	3.8	3.1	4.7
	Dropped out	45	1,028	4.4	8.2	7.7	2.7	7.3
BRAZORIA	Graduated	2,445	2,915	83.9	86.4	78.2	85.4	79.5
	Received GED	185	2,915	6.3	1.5	5.9	7.2	5.3
	Continued HS	250	2,915	8.6	11.0	14.9	6.0	13.3
	Dropped out	35	2,915	1.2	1.1	1.0	1.3	1.9
BRAZOS	Graduated	1,147	1,377	83.3	76.9	74.4	87.3	71.7
	Received GED	94	1,377	6.8	7.1	8.5	6.5	9.6
	Continued HS	71	1,377	5.2	8.5	8.2	3.4	8.0
	Dropped out	65	1,377	4.7	7.5	8.9	2.7	10.7
BREWSTER	Graduated	87	96	90.6	-	87.8	93.6	83.3
	Received GED	2	96	2.1	-	0.0	4.3	0.0
	Continued HS	3	96	3.1	-	6.1	0.0	8.3
	Dropped out	4	96	4.2	-	6.1	2.1	8.3
BRISCOE	Graduated	13	14	92.9	-	-	90.0	100.0
	Received GED	1	14	7.1	-	-	10.0	0.0
	Continued HS	0	14	0.0	-	-	0.0	0.0
	Dropped out	0	14	0.0	-	-	0.0	0.0
BROOKS	Graduated	101	117	86.3	-	86.6	-	84.1
	Received GED	3	117	2.6	-	2.7	-	2.3
	Continued HS	11	117	9.4	-	8.9	-	9.1
	Dropped out	2	117	1.7	-	1.8	-	4.5
BROWN	Graduated	474	523	90.6	100.0	84.6	91.5	89.1
	Received GED	14	523	2.7	0.0	1.0	3.3	3.6
	Continued HS	18	523	3.4	0.0	9.6	2.1	4.4
	Dropped out	17	523	3.3	0.0	4.8	3.1	2.9
BURLESON	Graduated	217	249	87.1	88.2	76.9	89.3	80.6
	Received GED	11	249	4.4	2.0	10.3	3.8	9.0
	Continued HS	4	249	1.6	3.9	0.0	1.3	3.0
	Dropped out	17	249	6.8	5.9	12.8	5.7	7.5
BURNET	Graduated	356	418	85.2	83.3	72.3	88.3	74.1
	Received GED	11	418	2.6	0.0	1.2	3.1	2.4
	Continued HS	35	418	8.4	16.7	18.1	5.8	16.5
	Dropped out	16	418	3.8	0.0	8.4	2.8	7.1
CALDWELL	Graduated	355	418	84.9	91.7	77.4	90.0	78.0
	Received GED	10	418	2.4	0.0	2.8	2.5	3.1
	Continued HS	32	418	7.7	2.8	11.3	5.5	11.0
	Dropped out	21	418	5.0	5.6	8.5	2.0	7.9
CALHOUN	Graduated	198	231	85.7	72.7	78.7	91.0	77.8
	Received GED	5	231	2.2	0.0	2.1	2.7	1.6
	Continued HS	27	231	11.7	27.3	18.1	6.3	19.0
	Dropped out	1	231	0.4	0.0	1.1	0.0	1.6
CALLAHAN	Graduated	214	228	93.9	-	93.8	93.8	92.7
	Received GED	6	228	2.6	-	0.0	2.8	1.8
	Continued HS	4	228	1.8	-	6.3	1.4	5.5
	Dropped out	4	228	1.8	-	0.0	1.9	0.0
CAMERON	Graduated	3,942	4,953	79.6	84.2	78.6	88.5	78.3
	Received GED	109	4,953	2.2	5.3	2.0	3.9	2.0
	Continued HS	657	4,953	13.3	10.5	14.0	6.1	14.7
	Dropped out	245	4,953	4.9	0.0	5.3	1.5	5.0
CAMP	Graduated	99	120	82.5	93.8	68.8	80.6	82.1
	Received GED	10	120	8.3	0.0	0.0	13.9	5.1
	Continued HS	8	120	6.7	6.3	31.3	1.4	10.3
	Dropped out	3	120	2.5	0.0	0.0	4.2	2.6

Note. A dash (-) indicates data are not reported to protect student anonymity.

Table 2. Longitudinal Dropout and Completion Rates, Grades 9-12, by Student Group,
Class of 2002: County Listing

County	Final Status	Number	Number in Cohort	Rate %				
				All Students	Afr. Am.	Hispanic	White	Econ. Dis.
CARSON	Graduated	93	97	95.9	-	100.0	95.4	84.6
	Received GED	1	97	1.0	-	0.0	1.1	0.0
	Continued HS	1	97	1.0	-	0.0	1.1	7.7
	Dropped out	2	97	2.1	-	0.0	2.3	7.7
CASS	Graduated	388	404	96.0	98.1	-	95.6	95.7
	Received GED	9	404	2.2	0.0	-	2.7	2.9
	Continued HS	5	404	1.2	1.0	-	1.4	0.7
	Dropped out	2	404	0.5	1.0	-	0.3	0.7
CASTRO	Graduated	121	140	86.4	100.0	83.1	90.4	79.7
	Received GED	4	140	2.9	0.0	0.0	7.7	1.7
	Continued HS	3	140	2.1	0.0	3.6	0.0	1.7
	Dropped out	12	140	8.6	0.0	13.3	1.9	16.9
CHAMBERS	Graduated	274	300	91.3	89.7	87.9	92.3	87.2
	Received GED	14	300	4.7	0.0	0.0	5.6	7.7
	Continued HS	6	300	2.0	6.9	9.1	0.4	5.1
	Dropped out	6	300	2.0	3.4	3.0	1.7	0.0
CHEROKEE	Graduated	401	448	89.5	95.2	81.7	89.6	82.7
	Received GED	18	448	4.0	0.0	0.0	6.2	3.6
	Continued HS	16	448	3.6	1.2	9.9	2.8	7.2
	Dropped out	13	448	2.9	3.6	8.5	1.4	6.5
CHILDRESS	Graduated	85	91	93.4	100.0	86.7	93.8	89.3
	Received GED	5	91	5.5	0.0	13.3	4.6	7.1
	Continued HS	0	91	0.0	0.0	0.0	0.0	0.0
	Dropped out	1	91	1.1	0.0	0.0	1.5	3.6
CLAY	Graduated	150	154	97.4	-	83.3	97.9	86.7
	Received GED	2	154	1.3	-	0.0	1.4	6.7
	Continued HS	1	154	0.6	-	0.0	0.7	0.0
	Dropped out	1	154	0.6	-	16.7	0.0	6.7
COCHRAN	Graduated	68	78	87.2	100.0	84.2	88.6	86.0
	Received GED	5	78	6.4	0.0	5.3	8.6	6.0
	Continued HS	4	78	5.1	0.0	7.9	2.9	6.0
	Dropped out	1	78	1.3	0.0	2.6	0.0	2.0
COKE	Graduated	63	151	41.7	4.2	33.3	59.2	29.6
	Received GED	71	151	47.0	66.7	54.9	35.5	53.1
	Continued HS	17	151	11.3	29.2	11.8	5.3	17.3
	Dropped out	0	151	0.0	0.0	0.0	0.0	0.0
COLEMAN	Graduated	108	128	84.4	-	95.5	81.9	75.5
	Received GED	3	128	2.3	-	0.0	2.9	2.0
	Continued HS	6	128	4.7	-	0.0	5.7	6.1
	Dropped out	11	128	8.6	-	4.5	9.5	16.3
COLLIN	Graduated	4,947	5,535	89.4	84.2	74.4	91.0	75.1
	Received GED	275	5,535	5.0	4.2	7.8	5.2	8.3
	Continued HS	198	5,535	3.6	7.6	10.6	2.4	9.0
	Dropped out	115	5,535	2.1	4.0	7.2	1.3	7.6
COLLINGSWORTH	Graduated	60	66	90.9	100.0	84.6	93.9	87.9
	Received GED	2	66	3.0	0.0	3.8	3.0	6.1
	Continued HS	1	66	1.5	0.0	3.8	0.0	3.0
	Dropped out	3	66	4.5	0.0	7.7	3.0	3.0
COLORADO	Graduated	242	276	87.7	87.7	79.6	90.0	79.8
	Received GED	17	276	6.2	3.5	4.1	7.6	7.1
	Continued HS	11	276	4.0	7.0	10.2	1.2	10.7
	Dropped out	6	276	2.2	1.8	6.1	1.2	2.4
COMAL	Graduated	1,000	1,220	82.0	71.4	71.3	86.0	62.5
	Received GED	82	1,220	6.7	19.0	5.8	6.7	11.9
	Continued HS	76	1,220	6.2	4.8	14.2	3.5	12.5
	Dropped out	62	1,220	5.1	4.8	8.7	3.8	13.1
COMANCHE	Graduated	132	155	85.2	-	76.1	89.0	73.3
	Received GED	5	155	3.2	-	0.0	4.6	3.3
	Continued HS	4	155	2.6	-	6.5	0.9	6.7
	Dropped out	14	155	9.0	-	17.4	5.5	16.7
CONCHO	Graduated	41	41	100.0	-	100.0	100.0	100.0
	Received GED	0	41	0.0	-	0.0	0.0	0.0
	Continued HS	0	41	0.0	-	0.0	0.0	0.0
	Dropped out	0	41	0.0	-	0.0	0.0	0.0

Note. A dash (-) indicates data are not reported to protect student anonymity.

Table 2. Longitudinal Dropout and Completion Rates, Grades 9-12, by Student Group,
Class of 2002: County Listing

County	Final Status	Number	Number in Cohort	Rate %				
				All Students	Afr. Am.	Hispanic	White	Econ. Dis.
COOKE	Graduated	356	393	90.6	90.0	71.4	92.5	85.5
	Received GED	20	393	5.1	0.0	8.6	5.1	6.5
	Continued HS	11	393	2.8	5.0	17.1	1.2	1.6
	Dropped out	6	393	1.5	5.0	2.9	1.2	6.5
CORYELL	Graduated	630	742	84.9	82.0	78.8	86.4	70.3
	Received GED	36	742	4.9	4.7	3.8	5.3	3.6
	Continued HS	49	742	6.6	9.3	11.3	4.9	16.2
	Dropped out	27	742	3.6	4.0	6.3	3.4	9.9
COTTLE	Graduated	26	29	89.7	83.3	85.7	93.8	88.2
	Received GED	1	29	3.4	0.0	0.0	6.3	0.0
	Continued HS	0	29	0.0	0.0	0.0	0.0	0.0
	Dropped out	2	29	6.9	16.7	14.3	0.0	11.8
CRANE	Graduated	72	82	87.8	-	81.6	92.7	81.8
	Received GED	2	82	2.4	-	5.3	0.0	0.0
	Continued HS	3	82	3.7	-	2.6	4.9	0.0
	Dropped out	5	82	6.1	-	10.5	2.4	18.2
CROCKETT	Graduated	51	57	89.5	-	93.1	85.7	94.7
	Received GED	2	57	3.5	-	0.0	7.1	0.0
	Continued HS	4	57	7.0	-	6.9	7.1	5.3
	Dropped out	0	57	0.0	-	0.0	0.0	0.0
CROSBY	Graduated	92	104	88.5	66.7	85.7	97.1	92.1
	Received GED	0	104	0.0	0.0	0.0	0.0	0.0
	Continued HS	7	104	6.7	0.0	9.5	2.9	3.2
	Dropped out	5	104	4.8	33.3	4.8	0.0	4.8
CULBERSON	Graduated	47	52	90.4	-	89.7	92.3	87.5
	Received GED	0	52	0.0	-	0.0	0.0	0.0
	Continued HS	4	52	7.7	-	7.7	7.7	10.0
	Dropped out	1	52	1.9	-	2.6	0.0	2.5
DALLAM	Graduated	76	84	90.5	-	88.2	92.2	87.0
	Received GED	2	84	2.4	-	0.0	1.6	4.3
	Continued HS	3	84	3.6	-	5.9	3.1	4.3
	Dropped out	3	84	3.6	-	5.9	3.1	4.3
DALLAS	Graduated	18,731	22,699	82.5	81.2	75.1	87.8	78.3
	Received GED	794	22,699	3.5	1.7	3.5	5.0	2.6
	Continued HS	2,172	22,699	9.6	11.3	15.0	5.0	13.3
	Dropped out	1,002	22,699	4.4	5.8	6.5	2.2	5.9
DAWSON	Graduated	195	225	86.7	87.5	83.6	90.5	85.2
	Received GED	17	225	7.6	12.5	8.2	6.3	8.6
	Continued HS	3	225	1.3	0.0	1.6	1.1	1.2
	Dropped out	10	225	4.4	0.0	6.6	2.1	4.9
DEAF SMITH	Graduated	243	300	81.0	80.0	75.7	93.3	78.1
	Received GED	10	300	3.3	0.0	3.9	2.2	5.2
	Continued HS	18	300	6.0	20.0	7.8	1.1	6.3
	Dropped out	29	300	9.7	0.0	12.6	3.4	10.4
DELTA	Graduated	68	71	95.8	100.0	-	94.6	95.2
	Received GED	2	71	2.8	0.0	-	3.6	0.0
	Continued HS	1	71	1.4	0.0	-	1.8	4.8
	Dropped out	0	71	0.0	0.0	-	0.0	0.0
DENTON	Graduated	3,785	4,279	88.5	86.9	75.3	90.4	69.0
	Received GED	199	4,279	4.7	2.6	7.2	4.6	5.2
	Continued HS	196	4,279	4.6	8.2	11.7	3.3	14.7
	Dropped out	99	4,279	2.3	2.2	5.9	1.8	11.0
DEWITT	Graduated	279	317	88.0	73.5	78.5	94.1	80.5
	Received GED	17	317	5.4	11.8	8.9	3.0	7.3
	Continued HS	11	317	3.5	5.9	5.1	2.5	6.1
	Dropped out	10	317	3.2	8.8	7.6	0.5	6.1
DICKENS	Graduated	32	32	100.0	-	100.0	100.0	100.0
	Received GED	0	32	0.0	-	0.0	0.0	0.0
	Continued HS	0	32	0.0	-	0.0	0.0	0.0
	Dropped out	0	32	0.0	-	0.0	0.0	0.0
DIMMIT	Graduated	128	160	80.0	-	79.3	85.7	83.8
	Received GED	6	160	3.8	-	3.4	7.1	4.5
	Continued HS	13	160	8.1	-	8.3	7.1	2.7
	Dropped out	13	160	8.1	-	9.0	0.0	9.0

Note. A dash (-) indicates data are not reported to protect student anonymity.

Table 2. Longitudinal Dropout and Completion Rates, Grades 9-12, by Student Group,
Class of 2002: County Listing

County	Final Status	Number	Number in Cohort	Rate %				
				All Students	Afr. Am.	Hispanic	White	Econ. Dis.
DONLEY	Graduated	48	50	96.0	-	-	95.2	94.7
	Received GED	1	50	2.0	-	-	2.4	0.0
	Continued HS	0	50	0.0	-	-	0.0	0.0
	Dropped out	1	50	2.0	-	-	2.4	5.3
DUVAL	Graduated	179	190	94.2	-	94.3	92.3	91.8
	Received GED	1	190	0.5	-	0.0	7.7	0.7
	Continued HS	3	190	1.6	-	1.7	0.0	2.2
	Dropped out	7	190	3.7	-	4.0	0.0	5.2
EASTLAND	Graduated	188	223	84.3	-	83.9	84.9	73.2
	Received GED	19	223	8.5	-	3.2	8.6	15.5
	Continued HS	9	223	4.0	-	6.5	3.8	7.0
	Dropped out	7	223	3.1	-	6.5	2.7	4.2
ECTOR	Graduated	1,392	1,811	76.9	70.0	72.0	82.5	67.2
	Received GED	47	1,811	2.6	1.1	1.6	3.9	2.1
	Continued HS	161	1,811	8.9	15.6	12.3	4.7	13.2
	Dropped out	211	1,811	11.7	13.3	14.1	8.9	17.6
EDWARDS	Graduated	49	54	90.7	-	88.0	92.9	87.9
	Received GED	2	54	3.7	-	0.0	7.1	6.1
	Continued HS	0	54	0.0	-	0.0	0.0	0.0
	Dropped out	3	54	5.6	-	12.0	0.0	6.1
EL PASO	Graduated	7,858	10,171	77.3	76.4	76.1	84.2	76.4
	Received GED	306	10,171	3.0	3.0	2.8	4.3	2.5
	Continued HS	1,362	10,171	13.4	12.2	14.6	6.4	15.0
	Dropped out	645	10,171	6.3	8.5	6.5	5.1	6.2
ELLIS	Graduated	1,372	1,537	89.3	91.2	82.3	90.7	83.9
	Received GED	69	1,537	4.5	2.2	4.7	4.8	3.5
	Continued HS	51	1,537	3.3	1.6	6.1	2.9	5.9
	Dropped out	45	1,537	2.9	4.9	6.9	1.6	6.7
ERATH	Graduated	312	342	91.2	-	76.7	94.3	70.2
	Received GED	10	342	2.9	-	3.3	2.9	7.0
	Continued HS	7	342	2.0	-	6.7	1.1	7.0
	Dropped out	13	342	3.8	-	13.3	1.8	15.8
FALLS	Graduated	174	207	84.1	76.8	70.3	92.0	71.3
	Received GED	5	207	2.4	1.8	0.0	3.5	2.3
	Continued HS	17	207	8.2	12.5	16.2	3.5	17.2
	Dropped out	11	207	5.3	8.9	13.5	0.9	9.2
FANNIN	Graduated	315	340	92.6	91.7	100.0	92.5	85.7
	Received GED	7	340	2.1	0.0	0.0	2.3	1.3
	Continued HS	9	340	2.6	4.2	0.0	2.6	5.2
	Dropped out	9	340	2.6	4.2	0.0	2.6	7.8
FAYETTE	Graduated	249	294	84.7	66.7	79.2	88.2	68.1
	Received GED	23	294	7.8	14.8	7.5	7.1	13.0
	Continued HS	10	294	3.4	11.1	11.3	0.5	11.6
	Dropped out	12	294	4.1	7.4	1.9	4.2	7.2
FISHER	Graduated	50	53	94.3	-	90.0	97.0	86.4
	Received GED	0	53	0.0	-	0.0	0.0	0.0
	Continued HS	0	53	0.0	-	0.0	0.0	0.0
	Dropped out	3	53	5.7	-	10.0	3.0	13.6
FLOYD	Graduated	100	111	90.1	-	85.5	96.1	86.7
	Received GED	2	111	1.8	-	1.8	2.0	2.2
	Continued HS	5	111	4.5	-	7.3	2.0	6.7
	Dropped out	4	111	3.6	-	5.5	0.0	4.4
FOARD	Graduated	28	29	96.6	-	85.7	100.0	92.9
	Received GED	0	29	0.0	-	0.0	0.0	0.0
	Continued HS	1	29	3.4	-	14.3	0.0	7.1
	Dropped out	0	29	0.0	-	0.0	0.0	0.0
FORT BEND	Graduated	4,613	5,248	87.9	88.2	76.9	91.3	79.1
	Received GED	186	5,248	3.5	1.8	6.0	4.0	4.3
	Continued HS	263	5,248	5.0	6.6	9.2	2.8	7.2
	Dropped out	186	5,248	3.5	3.4	7.9	1.9	9.4
FRANKLIN	Graduated	102	106	96.2	90.0	100.0	96.5	81.8
	Received GED	1	106	0.9	0.0	0.0	1.2	9.1
	Continued HS	0	106	0.0	0.0	0.0	0.0	0.0
	Dropped out	3	106	2.8	10.0	0.0	2.4	9.1

Note. A dash (-) indicates data are not reported to protect student anonymity.

Table 2. Longitudinal Dropout and Completion Rates, Grades 9-12, by Student Group,
Class of 2002: County Listing

County	Final Status	Number	Number in Cohort	Rate %				
				All Students	Afr. Am.	Hispanic	White	Econ. Dis.
FREESTONE	Graduated	208	224	92.9	95.5	72.7	93.5	90.5
	Received GED	3	224	1.3	0.0	0.0	1.8	2.4
	Continued HS	7	224	3.1	2.3	9.1	3.0	2.4
	Dropped out	6	224	2.7	2.3	18.2	1.8	4.8
FRIO	Graduated	146	167	87.4	-	86.1	93.1	86.7
	Received GED	5	167	3.0	-	2.9	3.4	2.7
	Continued HS	9	167	5.4	-	5.8	3.4	6.2
	Dropped out	7	167	4.2	-	5.1	0.0	4.4
GAINES	Graduated	178	203	87.7	100.0	86.7	87.2	84.4
	Received GED	9	203	4.4	0.0	2.4	6.4	1.3
	Continued HS	7	203	3.4	0.0	4.8	2.8	7.8
	Dropped out	9	203	4.4	0.0	6.0	3.7	6.5
GALVESTON	Graduated	3,554	4,155	85.5	84.1	75.3	87.5	74.6
	Received GED	209	4,155	5.0	2.2	5.5	5.9	4.6
	Continued HS	263	4,155	6.3	10.4	12.6	4.1	14.7
	Dropped out	129	4,155	3.1	3.3	6.6	2.5	6.1
GARZA	Graduated	60	80	75.0	57.1	73.0	79.4	74.2
	Received GED	9	80	11.3	14.3	8.1	14.7	6.5
	Continued HS	4	80	5.0	14.3	8.1	0.0	9.7
	Dropped out	7	80	8.8	14.3	10.8	5.9	9.7
GILLESPIE	Graduated	248	282	87.9	-	74.1	91.9	72.0
	Received GED	14	282	5.0	-	5.2	4.5	4.0
	Continued HS	9	282	3.2	-	10.3	1.4	14.0
	Dropped out	11	282	3.9	-	10.3	2.3	10.0
GLASSCOCK	Graduated	30	32	93.8	-	92.9	94.4	100.0
	Received GED	1	32	3.1	-	0.0	5.6	0.0
	Continued HS	1	32	3.1	-	7.1	0.0	0.0
	Dropped out	0	32	0.0	-	0.0	0.0	0.0
GOLIAD	Graduated	98	102	96.1	100.0	91.7	98.4	90.9
	Received GED	1	102	1.0	0.0	0.0	1.6	3.0
	Continued HS	0	102	0.0	0.0	0.0	0.0	0.0
	Dropped out	3	102	2.9	0.0	8.3	0.0	6.1
GONZALES	Graduated	213	255	83.5	90.2	76.6	87.6	82.1
	Received GED	13	255	5.1	0.0	5.6	6.7	4.5
	Continued HS	17	255	6.7	4.9	10.3	3.8	7.1
	Dropped out	12	255	4.7	4.9	7.5	1.9	6.3
GRAY	Graduated	274	319	85.9	81.8	85.7	85.7	75.0
	Received GED	19	319	6.0	0.0	2.4	7.0	13.2
	Continued HS	6	319	1.9	0.0	2.4	1.9	5.3
	Dropped out	20	319	6.3	18.2	9.5	5.4	6.6
GRAYSON	Graduated	1,125	1,312	85.7	85.1	76.9	86.3	74.6
	Received GED	89	1,312	6.8	3.2	4.6	7.2	10.5
	Continued HS	52	1,312	4.0	5.3	12.3	3.3	7.2
	Dropped out	46	1,312	3.5	6.4	6.2	3.2	7.7
GREGG	Graduated	1,297	1,581	82.0	76.9	67.0	84.9	64.0
	Received GED	78	1,581	4.9	3.9	5.2	5.2	7.5
	Continued HS	120	1,581	7.6	9.6	15.5	6.4	14.4
	Dropped out	86	1,581	5.4	9.6	12.4	3.5	14.0
GRIMES	Graduated	289	328	88.1	86.6	82.5	90.1	81.4
	Received GED	24	328	7.3	3.0	10.5	7.9	7.8
	Continued HS	6	328	1.8	4.5	1.8	1.0	4.9
	Dropped out	9	328	2.7	6.0	5.3	1.0	5.9
GUADALUPE	Graduated	975	1,152	84.6	87.9	74.5	89.7	71.4
	Received GED	51	1,152	4.4	3.3	6.5	3.4	10.4
	Continued HS	86	1,152	7.5	4.4	12.8	4.9	10.9
	Dropped out	40	1,152	3.5	4.4	6.3	1.9	7.3
HALE	Graduated	462	572	80.8	89.7	75.5	86.7	77.9
	Received GED	22	572	3.8	2.6	2.8	5.7	3.9
	Continued HS	35	572	6.1	2.6	8.8	2.8	6.1
	Dropped out	53	572	9.3	5.1	12.9	4.7	12.2
HALL	Graduated	56	58	96.6	-	95.7	96.8	100.0
	Received GED	0	58	0.0	-	0.0	0.0	0.0
	Continued HS	1	58	1.7	-	4.3	0.0	0.0
	Dropped out	1	58	1.7	-	0.0	3.2	0.0

Note. A dash (-) indicates data are not reported to protect student anonymity.

Table 2. Longitudinal Dropout and Completion Rates, Grades 9-12, by Student Group,
Class of 2002: County Listing

County	Final Status	Number	Number in Cohort	Rate %				
				All Students	Afr. Am.	Hispanic	White	Econ. Dis.
HAMILTON	Graduated	115	126	91.3	-	93.3	90.9	85.4
	Received GED	8	126	6.3	-	0.0	7.3	12.2
	Continued HS	1	126	0.8	-	0.0	0.9	0.0
	Dropped out	2	126	1.6	-	6.7	0.9	2.4
HANSFORD	Graduated	74	79	93.7	-	93.5	95.7	93.8
	Received GED	2	79	2.5	-	3.2	2.1	6.3
	Continued HS	3	79	3.8	-	3.2	2.1	0.0
	Dropped out	0	79	0.0	-	0.0	0.0	0.0
HARDEMAN	Graduated	80	81	98.8	100.0	100.0	98.2	96.3
	Received GED	1	81	1.2	0.0	0.0	1.8	3.7
	Continued HS	0	81	0.0	0.0	0.0	0.0	0.0
	Dropped out	0	81	0.0	0.0	0.0	0.0	0.0
HARDIN	Graduated	668	723	92.4	93.7	91.7	92.4	87.9
	Received GED	20	723	2.8	0.0	0.0	3.2	4.3
	Continued HS	21	723	2.9	2.5	8.3	2.7	5.0
	Dropped out	14	723	1.9	3.8	0.0	1.8	2.9
HARRIS	Graduated	30,080	37,803	79.6	75.1	71.0	87.9	71.2
	Received GED	1,543	37,803	4.1	2.8	4.0	5.2	3.8
	Continued HS	4,028	37,803	10.7	14.7	16.0	4.5	16.3
	Dropped out	2,152	37,803	5.7	7.4	8.9	2.4	8.7
HARRISON	Graduated	752	877	85.7	85.9	67.5	87.0	79.5
	Received GED	38	877	4.3	1.2	7.5	5.5	3.0
	Continued HS	44	877	5.0	7.6	12.5	3.5	10.0
	Dropped out	43	877	4.9	5.2	12.5	4.0	7.5
HARTLEY	Graduated	23	24	95.8	-	80.0	100.0	88.9
	Received GED	0	24	0.0	-	0.0	0.0	0.0
	Continued HS	1	24	4.2	-	20.0	0.0	11.1
	Dropped out	0	24	0.0	-	0.0	0.0	0.0
HASKELL	Graduated	87	89	97.8	-	96.6	98.2	95.3
	Received GED	1	89	1.1	-	0.0	1.8	2.3
	Continued HS	0	89	0.0	-	0.0	0.0	0.0
	Dropped out	1	89	1.1	-	3.4	0.0	2.3
HAYS	Graduated	1,205	1,437	83.9	88.4	75.1	89.2	69.3
	Received GED	49	1,437	3.4	2.3	3.5	3.5	4.8
	Continued HS	121	1,437	8.4	7.0	14.0	4.9	16.9
	Dropped out	62	1,437	4.3	2.3	7.4	2.4	9.0
HEMPHILL	Graduated	44	73	60.3	0.0	44.4	72.0	18.2
	Received GED	25	73	34.2	100.0	44.4	24.0	72.7
	Continued HS	0	73	0.0	0.0	0.0	0.0	0.0
	Dropped out	4	73	5.5	0.0	11.1	4.0	9.1
HENDERSON	Graduated	556	640	86.9	76.5	83.3	88.6	80.3
	Received GED	27	640	4.2	1.5	3.7	4.7	5.9
	Continued HS	26	640	4.1	11.8	7.4	2.7	5.3
	Dropped out	31	640	4.8	10.3	5.6	3.9	8.6
HIDALGO	Graduated	6,293	8,168	77.0	58.8	76.3	90.3	76.0
	Received GED	194	8,168	2.4	5.9	2.3	2.9	2.0
	Continued HS	1,092	8,168	13.4	17.6	13.8	4.8	15.0
	Dropped out	589	8,168	7.2	17.6	7.5	1.9	7.0
HILL	Graduated	383	434	88.2	81.6	86.1	89.6	85.7
	Received GED	10	434	2.3	2.0	0.0	2.9	1.2
	Continued HS	17	434	3.9	10.2	6.9	2.3	5.0
	Dropped out	24	434	5.5	6.1	6.9	5.2	8.1
HOCKLEY	Graduated	323	369	87.5	89.5	79.1	94.2	83.8
	Received GED	16	369	4.3	0.0	5.1	4.2	2.9
	Continued HS	18	369	4.9	5.3	9.5	1.0	8.1
	Dropped out	12	369	3.3	5.3	6.3	0.5	5.1
HOOD	Graduated	408	473	86.3	60.0	69.2	88.0	73.0
	Received GED	27	473	5.7	0.0	10.3	5.4	8.1
	Continued HS	21	473	4.4	40.0	5.1	4.0	8.1
	Dropped out	17	473	3.6	0.0	15.4	2.6	10.8
HOPKINS	Graduated	400	446	89.7	85.1	87.2	90.5	85.1
	Received GED	9	446	2.0	4.3	0.0	2.0	0.0
	Continued HS	12	446	2.7	2.1	2.6	2.8	3.4
	Dropped out	25	446	5.6	8.5	10.3	4.8	11.5

Note. A dash (-) indicates data are not reported to protect student anonymity.

Table 2. Longitudinal Dropout and Completion Rates, Grades 9-12, by Student Group,
Class of 2002: County Listing

County	Final Status	Number	Number in Cohort	Rate %				
				All Students	Afr. Am.	Hispanic	White	Econ. Dis.
HOUSTON	Graduated	242	276	87.7	90.5	83.3	86.0	86.1
	Received GED	16	276	5.8	2.9	0.0	8.7	2.8
	Continued HS	5	276	1.8	1.9	0.0	2.0	2.8
	Dropped out	13	276	4.7	4.8	16.7	3.3	8.3
HOWARD	Graduated	314	373	84.2	75.0	73.3	90.3	75.6
	Received GED	19	373	5.1	6.3	4.3	5.5	4.4
	Continued HS	23	373	6.2	12.5	14.7	1.3	13.3
	Dropped out	17	373	4.6	6.3	7.8	3.0	6.7
HUDSPETH	Graduated	45	48	93.8	-	94.6	90.9	94.6
	Received GED	0	48	0.0	-	0.0	0.0	0.0
	Continued HS	0	48	0.0	-	0.0	0.0	0.0
	Dropped out	3	48	6.3	-	5.4	9.1	5.4
HUNT	Graduated	783	945	82.9	82.1	74.4	83.6	76.3
	Received GED	42	945	4.4	1.8	1.2	5.3	5.3
	Continued HS	62	945	6.6	5.4	11.0	6.4	11.0
	Dropped out	58	945	6.1	10.7	13.4	4.8	7.5
HUTCHINSON	Graduated	324	396	81.8	69.2	70.8	84.7	68.2
	Received GED	13	396	3.3	0.0	1.5	3.8	4.5
	Continued HS	32	396	8.1	23.1	15.4	6.1	24.2
	Dropped out	27	396	6.8	7.7	12.3	5.4	3.0
IRION	Graduated	27	27	100.0	-	100.0	100.0	100.0
	Received GED	0	27	0.0	-	0.0	0.0	0.0
	Continued HS	0	27	0.0	-	0.0	0.0	0.0
	Dropped out	0	27	0.0	-	0.0	0.0	0.0
JACK	Graduated	117	127	92.1	-	100.0	91.5	76.9
	Received GED	3	127	2.4	-	0.0	2.6	3.8
	Continued HS	2	127	1.6	-	0.0	1.7	3.8
	Dropped out	5	127	3.9	-	0.0	4.3	15.4
JACKSON	Graduated	238	263	90.5	88.9	84.1	92.9	82.1
	Received GED	9	263	3.4	5.6	4.8	2.7	4.5
	Continued HS	10	263	3.8	0.0	6.3	3.3	6.0
	Dropped out	6	263	2.3	5.6	4.8	1.1	7.5
JASPER	Graduated	434	477	91.0	92.0	100.0	90.1	91.8
	Received GED	17	477	3.6	1.8	0.0	4.4	1.5
	Continued HS	13	477	2.7	2.7	0.0	2.9	4.5
	Dropped out	13	477	2.7	3.6	0.0	2.6	2.2
JEFF DAVIS	Graduated	24	34	70.6	-	75.0	71.4	35.7
	Received GED	6	34	17.6	-	8.3	23.8	35.7
	Continued HS	0	34	0.0	-	0.0	0.0	0.0
	Dropped out	4	34	11.8	-	16.7	4.8	28.6
JEFFERSON	Graduated	2,428	2,932	82.8	79.5	77.7	85.9	78.8
	Received GED	93	2,932	3.2	2.0	1.9	4.8	2.1
	Continued HS	213	2,932	7.3	9.1	11.4	5.2	8.5
	Dropped out	198	2,932	6.8	9.5	9.0	4.1	10.6
JIM HOGG	Graduated	91	93	97.8	-	98.9	80.0	100.0
	Received GED	2	93	2.2	-	1.1	20.0	0.0
	Continued HS	0	93	0.0	-	0.0	0.0	0.0
	Dropped out	0	93	0.0	-	0.0	0.0	0.0
JIM WELLS	Graduated	450	535	84.1	-	82.0	93.5	81.0
	Received GED	20	535	3.7	-	4.6	0.0	4.0
	Continued HS	38	535	7.1	-	7.8	3.2	8.1
	Dropped out	27	535	5.0	-	5.5	3.2	6.9
JOHNSON	Graduated	1,395	1,639	85.1	89.8	79.4	85.6	79.1
	Received GED	59	1,639	3.6	0.0	4.1	3.7	4.5
	Continued HS	105	1,639	6.4	6.1	13.4	5.5	9.9
	Dropped out	80	1,639	4.9	4.1	3.1	5.2	6.6
JONES	Graduated	244	262	93.1	88.9	95.0	92.7	90.1
	Received GED	5	262	1.9	0.0	0.0	2.6	2.2
	Continued HS	2	262	0.8	11.1	0.0	0.5	2.2
	Dropped out	11	262	4.2	0.0	5.0	4.1	5.5
KARNES	Graduated	194	219	88.6	100.0	83.5	94.4	84.9
	Received GED	3	219	1.4	0.0	1.7	1.1	1.1
	Continued HS	10	219	4.6	0.0	6.6	2.2	5.4
	Dropped out	12	219	5.5	0.0	8.3	2.2	8.6

Note. A dash (-) indicates data are not reported to protect student anonymity.

Table 2. Longitudinal Dropout and Completion Rates, Grades 9-12, by Student Group,
Class of 2002: County Listing

County	Final Status	Number	Number in Cohort	Rate %				
				All Students	Afr. Am.	Hispanic	White	Econ. Dis.
KAUFMAN	Graduated	926	1,064	87.0	86.3	75.2	88.8	82.1
	Received GED	31	1,064	2.9	2.4	2.0	2.9	2.4
	Continued HS	77	1,064	7.2	8.9	12.9	6.4	10.1
	Dropped out	30	1,064	2.8	2.4	9.9	1.9	5.4
KENDALL	Graduated	403	454	88.8	-	80.4	91.1	74.6
	Received GED	35	454	7.7	-	11.8	6.6	13.4
	Continued HS	11	454	2.4	-	5.9	1.4	9.0
	Dropped out	5	454	1.1	-	2.0	0.9	3.0
KENT	Graduated	12	13	92.3	-	-	92.3	-
	Received GED	0	13	0.0	-	-	0.0	-
	Continued HS	0	13	0.0	-	-	0.0	-
	Dropped out	1	13	7.7	-	-	7.7	-
KERR	Graduated	421	506	83.2	54.5	75.0	86.1	72.0
	Received GED	43	506	8.5	36.4	8.3	7.9	14.4
	Continued HS	27	506	5.3	0.0	10.2	4.2	7.2
	Dropped out	15	506	3.0	9.1	6.5	1.8	6.4
KIMBLE	Graduated	52	60	86.7	-	100.0	82.6	81.3
	Received GED	4	60	6.7	-	0.0	8.7	6.3
	Continued HS	2	60	3.3	-	0.0	4.3	6.3
	Dropped out	2	60	3.3	-	0.0	4.3	6.3
KING	Graduated	6	6	100.0	-	-	100.0	-
	Received GED	0	6	0.0	-	-	0.0	-
	Continued HS	0	6	0.0	-	-	0.0	-
	Dropped out	0	6	0.0	-	-	0.0	-
KINNEY	Graduated	45	46	97.8	-	96.6	100.0	100.0
	Received GED	1	46	2.2	-	3.4	0.0	0.0
	Continued HS	0	46	0.0	-	0.0	0.0	0.0
	Dropped out	0	46	0.0	-	0.0	0.0	0.0
KLEBERG	Graduated	394	463	85.1	81.3	82.9	92.1	83.1
	Received GED	13	463	2.8	0.0	2.7	2.6	2.3
	Continued HS	30	463	6.5	12.5	7.0	4.4	6.8
	Dropped out	26	463	5.6	6.3	7.3	0.9	7.9
KNOX	Graduated	62	65	95.4	-	100.0	96.8	96.0
	Received GED	1	65	1.5	-	0.0	3.2	0.0
	Continued HS	2	65	3.1	-	0.0	0.0	4.0
	Dropped out	0	65	0.0	-	0.0	0.0	0.0
LA SALLE	Graduated	77	85	90.6	-	92.9	85.7	92.0
	Received GED	4	85	4.7	-	2.9	7.1	4.0
	Continued HS	2	85	2.4	-	2.9	0.0	4.0
	Dropped out	2	85	2.4	-	1.4	7.1	0.0
LAMAR	Graduated	490	555	88.3	85.7	88.9	88.9	80.2
	Received GED	29	555	5.2	3.8	0.0	5.8	6.0
	Continued HS	20	555	3.6	7.6	11.1	2.3	6.9
	Dropped out	16	555	2.9	2.9	0.0	3.0	6.9
LAMB	Graduated	214	245	87.3	92.9	79.8	95.3	79.6
	Received GED	7	245	2.9	0.0	4.8	0.9	5.8
	Continued HS	11	245	4.5	7.1	5.6	2.8	6.8
	Dropped out	13	245	5.3	0.0	9.7	0.9	7.8
LAMPASAS	Graduated	230	265	86.8	100.0	81.4	86.7	79.5
	Received GED	4	265	1.5	0.0	2.3	1.5	1.4
	Continued HS	15	265	5.7	0.0	4.7	6.4	11.0
	Dropped out	16	265	6.0	0.0	11.6	5.4	8.2
LAVACA	Graduated	161	167	96.4	100.0	100.0	95.5	91.9
	Received GED	3	167	1.8	0.0	0.0	2.2	2.7
	Continued HS	3	167	1.8	0.0	0.0	2.2	5.4
	Dropped out	0	167	0.0	0.0	0.0	0.0	0.0
LEE	Graduated	180	208	86.5	76.9	87.2	87.9	76.9
	Received GED	13	208	6.3	7.7	7.7	5.7	9.6
	Continued HS	8	208	3.8	7.7	0.0	4.3	3.8
	Dropped out	7	208	3.4	7.7	5.1	2.1	9.6
LEON	Graduated	202	223	90.6	90.9	82.4	91.3	82.7
	Received GED	7	223	3.1	0.0	5.9	3.3	3.8
	Continued HS	5	223	2.2	9.1	0.0	1.6	1.9
	Dropped out	9	223	4.0	0.0	11.8	3.8	11.5

Note. A dash (-) indicates data are not reported to protect student anonymity.

Table 2. Longitudinal Dropout and Completion Rates, Grades 9-12, by Student Group,
Class of 2002: County Listing

County	Final Status	Number	Number in Cohort	Rate %				
				All Students	Afr. Am.	Hispanic	White	Econ. Dis.
LIBERTY	Graduated	790	919	86.0	89.1	78.7	86.4	84.4
	Received GED	49	919	5.3	0.0	6.4	6.1	5.5
	Continued HS	49	919	5.3	9.4	7.4	4.4	7.2
	Dropped out	31	919	3.4	1.6	7.4	3.2	3.0
LIMESTONE	Graduated	235	272	86.4	84.9	75.8	89.1	84.8
	Received GED	10	272	3.7	1.4	0.0	5.5	1.3
	Continued HS	18	272	6.6	8.2	18.2	3.6	7.6
	Dropped out	9	272	3.3	5.5	6.1	1.8	6.3
LIPSCOMB	Graduated	58	62	93.5	-	92.3	93.9	86.4
	Received GED	1	62	1.6	-	0.0	2.0	4.5
	Continued HS	1	62	1.6	-	0.0	2.0	4.5
	Dropped out	2	62	3.2	-	7.7	2.0	4.5
LIVE OAK	Graduated	136	150	90.7	-	90.3	90.7	90.0
	Received GED	4	150	2.7	-	4.8	1.2	3.3
	Continued HS	7	150	4.7	-	3.2	5.8	0.0
	Dropped out	3	150	2.0	-	1.6	2.3	6.7
LLANO	Graduated	94	107	87.9	-	88.9	87.6	78.9
	Received GED	2	107	1.9	-	0.0	2.1	0.0
	Continued HS	3	107	2.8	-	11.1	2.1	5.3
	Dropped out	8	107	7.5	-	0.0	8.2	15.8
LUBBOCK	Graduated	2,531	2,922	86.6	84.0	79.6	91.4	77.4
	Received GED	97	2,922	3.3	1.6	3.5	3.6	4.0
	Continued HS	166	2,922	5.7	7.5	8.8	3.3	8.0
	Dropped out	128	2,922	4.4	6.9	8.0	1.6	10.7
LYNN	Graduated	129	138	93.5	-	89.7	96.1	93.2
	Received GED	1	138	0.7	-	0.0	1.3	0.0
	Continued HS	3	138	2.2	-	5.2	0.0	4.1
	Dropped out	5	138	3.6	-	5.2	2.6	2.7
MADISON	Graduated	119	145	82.1	97.1	64.7	79.3	74.6
	Received GED	14	145	9.7	0.0	5.9	14.1	10.2
	Continued HS	11	145	7.6	2.9	23.5	6.5	13.6
	Dropped out	1	145	0.7	0.0	5.9	0.0	1.7
MARION	Graduated	76	93	81.7	78.4	-	83.6	83.0
	Received GED	4	93	4.3	0.0	-	7.3	0.0
	Continued HS	3	93	3.2	8.1	-	0.0	6.4
	Dropped out	10	93	10.8	13.5	-	9.1	10.6
MARTIN	Graduated	76	85	89.4	-	85.4	92.9	88.2
	Received GED	2	85	2.4	-	0.0	4.8	2.9
	Continued HS	2	85	2.4	-	4.9	0.0	2.9
	Dropped out	5	85	5.9	-	9.8	2.4	5.9
MASON	Graduated	56	57	98.2	-	100.0	97.1	95.2
	Received GED	1	57	1.8	-	0.0	2.9	4.8
	Continued HS	0	57	0.0	-	0.0	0.0	0.0
	Dropped out	0	57	0.0	-	0.0	0.0	0.0
MATAGORDA	Graduated	486	546	89.0	91.0	82.3	91.7	84.4
	Received GED	20	546	3.7	1.0	3.7	4.8	4.9
	Continued HS	29	546	5.3	4.0	11.0	2.8	7.8
	Dropped out	11	546	2.0	4.0	3.0	0.8	2.9
MAVERICK	Graduated	529	709	74.6	-	75.1	84.6	73.4
	Received GED	30	709	4.2	-	3.9	7.7	4.2
	Continued HS	124	709	17.5	-	17.3	7.7	18.4
	Dropped out	26	709	3.7	-	3.6	0.0	4.0
MCCULLOCH	Graduated	97	107	90.7	-	83.3	94.3	87.0
	Received GED	6	107	5.6	-	8.3	4.3	8.7
	Continued HS	2	107	1.9	-	5.6	0.0	4.3
	Dropped out	2	107	1.9	-	2.8	1.4	0.0
MCLENNAN	Graduated	2,029	2,508	80.9	69.4	72.2	88.0	71.2
	Received GED	144	2,508	5.7	5.5	4.9	6.2	5.6
	Continued HS	191	2,508	7.6	15.6	13.3	2.9	12.4
	Dropped out	144	2,508	5.7	9.4	9.6	2.9	10.7
MCMULLEN	Graduated	16	17	94.1	-	85.7	100.0	100.0
	Received GED	0	17	0.0	-	0.0	0.0	0.0
	Continued HS	1	17	5.9	-	14.3	0.0	0.0
	Dropped out	0	17	0.0	-	0.0	0.0	0.0

Note. A dash (-) indicates data are not reported to protect student anonymity.

Table 2. Longitudinal Dropout and Completion Rates, Grades 9-12, by Student Group,
Class of 2002: County Listing

County	Final Status	Number	Number in Cohort	Rate %				
				All Students	Afr. Am.	Hispanic	White	Econ. Dis.
MEDINA	Graduated	542	604	89.7	85.7	87.9	91.7	84.1
	Received GED	19	604	3.1	0.0	2.8	3.3	3.8
	Continued HS	23	604	3.8	14.3	4.5	3.0	6.0
	Dropped out	20	604	3.3	0.0	4.8	2.0	6.0
MENARD	Graduated	42	44	95.5	-	95.2	95.7	100.0
	Received GED	2	44	4.5	-	4.8	4.3	0.0
	Continued HS	0	44	0.0	-	0.0	0.0	0.0
	Dropped out	0	44	0.0	-	0.0	0.0	0.0
MIDLAND	Graduated	1,318	1,655	79.6	67.4	69.0	87.4	64.2
	Received GED	65	1,655	3.9	2.8	3.4	4.3	4.0
	Continued HS	167	1,655	10.1	16.3	16.7	5.5	18.4
	Dropped out	105	1,655	6.3	13.5	10.9	2.7	13.4
MILAM	Graduated	299	339	88.2	77.8	86.8	90.5	80.0
	Received GED	26	339	7.7	16.7	4.4	7.6	12.4
	Continued HS	7	339	2.1	5.6	3.3	1.0	5.7
	Dropped out	7	339	2.1	0.0	5.5	1.0	1.9
MILLS	Graduated	71	76	93.4	-	71.4	98.4	84.6
	Received GED	0	76	0.0	-	0.0	0.0	0.0
	Continued HS	2	76	2.6	-	14.3	0.0	7.7
	Dropped out	3	76	3.9	-	14.3	1.6	7.7
MITCHELL	Graduated	90	99	90.9	-	94.9	87.3	92.9
	Received GED	2	99	2.0	-	0.0	3.6	0.0
	Continued HS	4	99	4.0	-	2.6	5.5	3.6
	Dropped out	3	99	3.0	-	2.6	3.6	3.6
MONTAGUE	Graduated	213	250	85.2	-	80.0	85.8	79.4
	Received GED	20	250	8.0	-	4.0	8.4	9.5
	Continued HS	4	250	1.6	-	4.0	1.3	3.2
	Dropped out	13	250	5.2	-	12.0	4.4	7.9
MONTGOMERY	Graduated	3,339	3,840	87.0	80.1	81.9	87.8	77.1
	Received GED	212	3,840	5.5	2.3	4.8	5.9	8.0
	Continued HS	178	3,840	4.6	11.1	8.4	3.8	8.5
	Dropped out	111	3,840	2.9	6.4	5.0	2.5	6.4
MOORE	Graduated	296	321	92.2	-	91.4	94.0	92.0
	Received GED	13	321	4.0	-	3.7	4.6	2.3
	Continued HS	6	321	1.9	-	1.8	1.3	3.4
	Dropped out	6	321	1.9	-	3.1	0.0	2.3
MORRIS	Graduated	133	157	84.7	80.0	87.5	87.1	87.9
	Received GED	7	157	4.5	1.8	0.0	6.5	0.0
	Continued HS	2	157	1.3	1.8	0.0	1.1	3.4
	Dropped out	15	157	9.6	16.4	12.5	5.4	8.6
MOTLEY	Graduated	20	20	100.0	-	100.0	100.0	100.0
	Received GED	0	20	0.0	-	0.0	0.0	0.0
	Continued HS	0	20	0.0	-	0.0	0.0	0.0
	Dropped out	0	20	0.0	-	0.0	0.0	0.0
NACOGDOCHES	Graduated	599	673	89.0	83.6	75.7	92.4	82.5
	Received GED	17	673	2.5	0.0	2.9	3.3	1.0
	Continued HS	31	673	4.6	11.9	12.9	1.3	9.0
	Dropped out	26	673	3.9	4.5	8.6	3.0	7.5
NAVARRO	Graduated	484	581	83.3	79.7	78.2	85.6	78.2
	Received GED	21	581	3.6	2.1	2.6	4.5	3.4
	Continued HS	33	581	5.7	7.0	7.7	4.8	7.8
	Dropped out	43	581	7.4	11.2	11.5	5.1	10.7
NEWTON	Graduated	155	166	93.4	96.1	-	91.9	91.0
	Received GED	4	166	2.4	0.0	-	3.6	4.5
	Continued HS	5	166	3.0	3.9	-	2.7	3.0
	Dropped out	2	166	1.2	0.0	-	1.8	1.5
NOLAN	Graduated	207	245	84.5	70.0	71.6	91.3	72.3
	Received GED	16	245	6.5	20.0	10.8	3.7	9.6
	Continued HS	10	245	4.1	0.0	9.5	1.9	8.4
	Dropped out	12	245	4.9	10.0	8.1	3.1	9.6
NUECES	Graduated	3,202	4,037	79.3	71.1	74.9	87.4	72.8
	Received GED	202	4,037	5.0	7.6	4.7	5.3	4.5
	Continued HS	428	4,037	10.6	13.7	13.7	5.3	14.0
	Dropped out	205	4,037	5.1	7.6	6.8	2.1	8.7

Note. A dash (-) indicates data are not reported to protect student anonymity.

Table 2. Longitudinal Dropout and Completion Rates, Grades 9-12, by Student Group,
Class of 2002: County Listing

County	Final Status	Number	Number in Cohort	Rate %				
				All Students	Afr. Am.	Hispanic	White	Econ. Dis.
OCHILTREE	Graduated	124	146	84.9	-	72.5	90.4	58.1
	Received GED	5	146	3.4	-	5.0	2.9	6.5
	Continued HS	10	146	6.8	-	12.5	4.8	25.8
	Dropped out	7	146	4.8	-	10.0	1.9	9.7
OLDHAM	Graduated	63	71	88.7	100.0	100.0	86.5	82.9
	Received GED	5	71	7.0	0.0	0.0	7.7	11.4
	Continued HS	0	71	0.0	0.0	0.0	0.0	0.0
	Dropped out	3	71	4.2	0.0	0.0	5.8	5.7
ORANGE	Graduated	1,053	1,191	88.4	80.8	96.4	89.4	76.4
	Received GED	59	1,191	5.0	0.8	0.0	5.7	6.1
	Continued HS	38	1,191	3.2	7.7	3.6	2.5	8.3
	Dropped out	41	1,191	3.4	10.8	0.0	2.4	9.2
PALO PINTO	Graduated	263	303	86.8	100.0	91.7	85.8	80.4
	Received GED	25	303	8.3	0.0	5.6	8.7	8.7
	Continued HS	7	303	2.3	0.0	0.0	2.8	4.3
	Dropped out	8	303	2.6	0.0	2.8	2.8	6.5
PANOLA	Graduated	236	282	83.7	81.3	78.6	84.9	58.9
	Received GED	15	282	5.3	0.0	7.1	6.0	10.7
	Continued HS	21	282	7.4	14.6	0.0	6.4	16.1
	Dropped out	10	282	3.5	4.2	14.3	2.8	14.3
PARKER	Graduated	934	1,098	85.1	50.0	62.5	86.9	68.0
	Received GED	87	1,098	7.9	40.0	20.8	6.8	13.6
	Continued HS	46	1,098	4.2	0.0	9.7	3.9	8.8
	Dropped out	31	1,098	2.8	10.0	6.9	2.5	9.6
PARMER	Graduated	152	160	95.0	-	93.3	97.1	91.3
	Received GED	2	160	1.3	-	0.0	2.9	0.0
	Continued HS	1	160	0.6	-	1.1	0.0	1.4
	Dropped out	5	160	3.1	-	5.6	0.0	7.2
PECOS	Graduated	201	272	73.9	0.0	72.7	84.6	63.1
	Received GED	43	272	15.8	75.0	14.2	12.8	24.8
	Continued HS	13	272	4.8	25.0	5.5	1.3	5.0
	Dropped out	15	272	5.5	0.0	7.7	1.3	7.1
POLK	Graduated	354	423	83.7	84.5	78.8	84.6	85.0
	Received GED	20	423	4.7	0.0	3.8	5.9	4.5
	Continued HS	22	423	5.2	10.3	7.7	3.9	4.5
	Dropped out	27	423	6.4	5.2	9.6	5.6	6.0
POTTER	Graduated	1,636	1,993	82.1	85.4	72.8	84.5	60.8
	Received GED	133	1,993	6.7	2.1	7.4	7.0	9.4
	Continued HS	108	1,993	5.4	6.3	9.8	4.0	12.6
	Dropped out	116	1,993	5.8	6.3	10.0	4.5	17.1
PRESIDIO	Graduated	116	139	83.5	-	83.2	87.5	83.2
	Received GED	2	139	1.4	-	1.5	0.0	0.8
	Continued HS	4	139	2.9	-	2.3	12.5	2.5
	Dropped out	17	139	12.2	-	13.0	0.0	13.4
RAINS	Graduated	92	101	91.1	87.5	-	92.2	92.6
	Received GED	4	101	4.0	0.0	-	3.3	0.0
	Continued HS	3	101	3.0	12.5	-	2.2	3.7
	Dropped out	2	101	2.0	0.0	-	2.2	3.7
RANDALL	Graduated	495	546	90.7	87.5	78.5	92.3	67.6
	Received GED	31	546	5.7	0.0	9.2	5.3	16.2
	Continued HS	10	546	1.8	0.0	7.7	1.1	8.1
	Dropped out	10	546	1.8	12.5	4.6	1.3	8.1
REAGAN	Graduated	62	62	100.0	-	100.0	100.0	100.0
	Received GED	0	62	0.0	-	0.0	0.0	0.0
	Continued HS	0	62	0.0	-	0.0	0.0	0.0
	Dropped out	0	62	0.0	-	0.0	0.0	0.0
REAL	Graduated	22	26	84.6	-	71.4	89.5	72.7
	Received GED	0	26	0.0	-	0.0	0.0	0.0
	Continued HS	2	26	7.7	-	14.3	5.3	18.2
	Dropped out	2	26	7.7	-	14.3	5.3	9.1
RED RIVER	Graduated	161	176	91.5	93.5	85.7	91.1	92.7
	Received GED	5	176	2.8	2.2	0.0	3.3	0.0
	Continued HS	4	176	2.3	0.0	0.0	3.3	2.4
	Dropped out	6	176	3.4	4.3	14.3	2.4	4.9

Note. A dash (-) indicates data are not reported to protect student anonymity.

Table 2. Longitudinal Dropout and Completion Rates, Grades 9-12, by Student Group,
Class of 2002: County Listing

County	Final Status	Number	Number in Cohort	Rate %				
				All Students	Afr. Am.	Hispanic	White	Econ. Dis.
REEVES	Graduated	196	222	88.3	-	86.9	100.0	89.7
	Received GED	8	222	3.6	-	4.0	0.0	2.6
	Continued HS	7	222	3.2	-	3.5	0.0	2.6
	Dropped out	11	222	5.0	-	5.6	0.0	5.2
REFUGIO	Graduated	88	103	85.4	83.3	82.1	90.2	78.6
	Received GED	5	103	4.9	16.7	5.4	2.4	7.1
	Continued HS	5	103	4.9	0.0	5.4	4.9	7.1
	Dropped out	5	103	4.9	0.0	7.1	2.4	7.1
ROBERTS	Graduated	18	18	100.0	-	-	100.0	-
	Received GED	0	18	0.0	-	-	0.0	-
	Continued HS	0	18	0.0	-	-	0.0	-
	Dropped out	0	18	0.0	-	-	0.0	-
ROBERTSON	Graduated	185	213	86.9	87.0	77.3	88.5	86.8
	Received GED	11	213	5.2	1.4	9.1	6.6	1.5
	Continued HS	5	213	2.3	1.4	0.0	3.3	1.5
	Dropped out	12	213	5.6	10.1	13.6	1.6	10.3
ROCKWALL	Graduated	594	705	84.3	75.0	71.4	86.1	72.7
	Received GED	24	705	3.4	3.6	1.3	3.8	3.0
	Continued HS	52	705	7.4	14.3	18.2	5.8	10.6
	Dropped out	35	705	5.0	7.1	9.1	4.3	13.6
RUNNELS	Graduated	166	184	90.2	-	82.5	94.1	83.6
	Received GED	2	184	1.1	-	0.0	1.7	2.7
	Continued HS	11	184	6.0	-	9.5	4.2	8.2
	Dropped out	5	184	2.7	-	7.9	0.0	5.5
RUSK	Graduated	482	549	87.8	90.0	77.6	88.5	80.5
	Received GED	26	549	4.7	1.3	3.4	6.5	3.1
	Continued HS	18	549	3.3	3.3	8.6	2.4	7.2
	Dropped out	23	549	4.2	5.3	10.3	2.6	9.2
SABINE	Graduated	91	95	95.8	100.0	-	95.1	94.6
	Received GED	1	95	1.1	0.0	-	1.2	0.0
	Continued HS	2	95	2.1	0.0	-	2.5	2.7
	Dropped out	1	95	1.1	0.0	-	1.2	2.7
SAN AUGUSTINE	Graduated	90	96	93.8	100.0	-	87.5	92.7
	Received GED	1	96	1.0	0.0	-	2.1	1.8
	Continued HS	3	96	3.1	0.0	-	6.3	3.6
	Dropped out	2	96	2.1	0.0	-	4.2	1.8
SAN JACINTO	Graduated	180	208	86.5	96.0	77.8	83.8	81.4
	Received GED	7	208	3.4	2.0	0.0	4.1	7.1
	Continued HS	10	208	4.8	2.0	0.0	6.1	4.3
	Dropped out	11	208	5.3	0.0	22.2	6.1	7.1
SAN PATRICIO	Graduated	891	1,042	85.5	82.1	83.6	88.2	82.0
	Received GED	57	1,042	5.5	10.7	3.4	7.9	5.0
	Continued HS	56	1,042	5.4	3.6	7.7	2.3	7.1
	Dropped out	38	1,042	3.6	3.6	5.2	1.6	5.8
SAN SABA	Graduated	81	88	92.0	-	100.0	89.2	89.3
	Received GED	4	88	4.5	-	0.0	6.2	7.1
	Continued HS	1	88	1.1	-	0.0	1.5	3.6
	Dropped out	2	88	2.3	-	0.0	3.1	0.0
SCHLEICHER	Graduated	50	51	98.0	-	96.6	100.0	92.9
	Received GED	0	51	0.0	-	0.0	0.0	0.0
	Continued HS	0	51	0.0	-	0.0	0.0	0.0
	Dropped out	1	51	2.0	-	3.4	0.0	7.1
SCURRY	Graduated	192	217	88.5	60.0	80.3	94.1	69.4
	Received GED	4	217	1.8	0.0	1.3	2.2	6.1
	Continued HS	8	217	3.7	20.0	7.9	0.7	6.1
	Dropped out	13	217	6.0	20.0	10.5	3.0	18.4
SHACKELFORD	Graduated	52	55	94.5	-	85.7	95.7	86.7
	Received GED	1	55	1.8	-	0.0	2.1	6.7
	Continued HS	1	55	1.8	-	0.0	2.1	6.7
	Dropped out	1	55	1.8	-	14.3	0.0	0.0
SHELBY	Graduated	244	276	88.4	87.6	88.2	88.7	83.1
	Received GED	5	276	1.8	0.0	5.9	2.4	1.2
	Continued HS	9	276	3.3	4.5	0.0	3.0	4.8
	Dropped out	18	276	6.5	7.9	5.9	6.0	10.8

Note. A dash (-) indicates data are not reported to protect student anonymity.

Table 2. Longitudinal Dropout and Completion Rates, Grades 9-12, by Student Group,
Class of 2002: County Listing

County	Final Status	Number	Number in Cohort	Rate %				
				All Students	Afr. Am.	Hispanic	White	Econ. Dis.
SHERMAN	Graduated	38	45	84.4	-	75.0	87.9	70.0
	Received GED	0	45	0.0	-	0.0	0.0	0.0
	Continued HS	7	45	15.6	-	25.0	12.1	30.0
	Dropped out	0	45	0.0	-	0.0	0.0	0.0
SMITH	Graduated	1,730	2,073	83.5	80.0	68.0	87.9	73.9
	Received GED	92	2,073	4.4	1.3	3.1	6.0	5.0
	Continued HS	133	2,073	6.4	10.1	13.3	3.6	11.0
	Dropped out	118	2,073	5.7	8.6	15.6	2.5	10.2
SOMERVELL	Graduated	126	138	91.3	-	94.7	90.7	84.4
	Received GED	3	138	2.2	-	0.0	2.5	0.0
	Continued HS	9	138	6.5	-	5.3	6.8	15.6
	Dropped out	0	138	0.0	-	0.0	0.0	0.0
STARR	Graduated	646	850	76.0	-	75.8	-	79.4
	Received GED	4	850	0.5	-	0.5	-	0.4
	Continued HS	95	850	11.2	-	11.3	-	9.6
	Dropped out	105	850	12.4	-	12.4	-	10.6
STEPHENS	Graduated	120	140	85.7	-	80.8	86.7	81.0
	Received GED	3	140	2.1	-	0.0	2.7	4.8
	Continued HS	1	140	0.7	-	0.0	0.9	0.0
	Dropped out	16	140	11.4	-	19.2	9.7	14.3
STERLING	Graduated	22	23	95.7	-	100.0	92.3	-
	Received GED	0	23	0.0	-	0.0	0.0	-
	Continued HS	1	23	4.3	-	0.0	7.7	-
	Dropped out	0	23	0.0	-	0.0	0.0	-
STONEWALL	Graduated	15	17	88.2	-	-	92.9	-
	Received GED	2	17	11.8	-	-	7.1	-
	Continued HS	0	17	0.0	-	-	0.0	-
	Dropped out	0	17	0.0	-	-	0.0	-
SUTTON	Graduated	51	58	87.9	-	85.7	90.0	75.0
	Received GED	3	58	5.2	-	0.0	10.0	16.7
	Continued HS	0	58	0.0	-	0.0	0.0	0.0
	Dropped out	4	58	6.9	-	14.3	0.0	8.3
SWISHER	Graduated	136	156	87.2	60.0	83.3	92.4	80.5
	Received GED	5	156	3.2	0.0	4.2	2.5	3.9
	Continued HS	6	156	3.8	0.0	5.6	2.5	5.2
	Dropped out	9	156	5.8	40.0	6.9	2.5	10.4
TARRANT	Graduated	13,386	16,486	81.2	74.9	67.7	86.9	66.6
	Received GED	602	16,486	3.7	1.8	2.7	4.7	3.3
	Continued HS	1,446	16,486	8.8	14.5	16.8	4.6	18.2
	Dropped out	1,052	16,486	6.4	8.8	12.9	3.7	11.9
TAYLOR	Graduated	1,364	1,608	84.8	84.6	71.9	88.1	70.7
	Received GED	74	1,608	4.6	3.1	5.4	4.7	7.9
	Continued HS	103	1,608	6.4	6.9	14.4	4.3	13.5
	Dropped out	67	1,608	4.2	5.4	8.3	2.9	7.9
TERRELL	Graduated	14	14	100.0	-	100.0	100.0	100.0
	Received GED	0	14	0.0	-	0.0	0.0	0.0
	Continued HS	0	14	0.0	-	0.0	0.0	0.0
	Dropped out	0	14	0.0	-	0.0	0.0	0.0
TERRY	Graduated	186	197	94.4	70.0	93.9	97.7	88.9
	Received GED	2	197	1.0	0.0	2.0	0.0	1.6
	Continued HS	6	197	3.0	10.0	3.1	2.3	4.8
	Dropped out	3	197	1.5	20.0	1.0	0.0	4.8
THROCKMORTON	Graduated	37	37	100.0	-	100.0	100.0	100.0
	Received GED	0	37	0.0	-	0.0	0.0	0.0
	Continued HS	0	37	0.0	-	0.0	0.0	0.0
	Dropped out	0	37	0.0	-	0.0	0.0	0.0
TITUS	Graduated	320	358	89.4	93.3	85.7	90.3	88.8
	Received GED	14	358	3.9	0.0	0.0	6.8	0.9
	Continued HS	14	358	3.9	0.0	9.5	1.9	6.9
	Dropped out	10	358	2.8	6.7	4.8	1.0	3.4
TOM GREEN	Graduated	1,151	1,461	78.8	83.3	67.2	85.7	70.5
	Received GED	98	1,461	6.7	3.0	8.0	6.3	8.4
	Continued HS	127	1,461	8.7	13.6	14.5	4.6	10.9
	Dropped out	85	1,461	5.8	0.0	10.3	3.4	10.3

Note. A dash (-) indicates data are not reported to protect student anonymity.

Table 2. Longitudinal Dropout and Completion Rates, Grades 9-12, by Student Group,
Class of 2002: County Listing

County	Final Status	Number	Number in Cohort	Rate %				
				All Students	Afr. Am.	Hispanic	White	Econ. Dis.
TRAVIS	Graduated	5,477	7,009	78.1	73.3	66.2	86.6	63.4
	Received GED	268	7,009	3.8	2.9	3.6	4.5	4.0
	Continued HS	755	7,009	10.8	15.0	16.7	5.9	19.9
	Dropped out	509	7,009	7.3	8.8	13.5	3.0	12.7
TRINITY	Graduated	143	158	90.5	92.0	60.0	92.6	87.3
	Received GED	8	158	5.1	4.0	10.0	4.9	2.8
	Continued HS	1	158	0.6	4.0	0.0	0.0	1.4
	Dropped out	6	158	3.8	0.0	30.0	2.5	8.5
TYLER	Graduated	220	248	88.7	97.3	-	87.1	85.1
	Received GED	13	248	5.2	0.0	-	6.5	6.9
	Continued HS	9	248	3.6	0.0	-	4.0	5.7
	Dropped out	6	248	2.4	2.7	-	2.5	2.3
UPSHUR	Graduated	426	462	92.2	87.8	78.9	93.4	84.7
	Received GED	16	462	3.5	0.0	0.0	4.1	4.8
	Continued HS	14	462	3.0	6.1	21.1	1.8	7.3
	Dropped out	6	462	1.3	6.1	0.0	0.8	3.2
UPTON	Graduated	73	74	98.6	-	97.4	100.0	96.4
	Received GED	0	74	0.0	-	0.0	0.0	0.0
	Continued HS	0	74	0.0	-	0.0	0.0	0.0
	Dropped out	1	74	1.4	-	2.6	0.0	3.6
UVALDE	Graduated	316	415	76.1	-	71.4	87.9	69.6
	Received GED	18	415	4.3	-	3.7	6.0	5.3
	Continued HS	42	415	10.1	-	12.8	3.4	13.0
	Dropped out	39	415	9.4	-	12.1	2.6	12.1
VAL VERDE	Graduated	456	625	73.0	87.5	71.6	82.6	66.5
	Received GED	18	625	2.9	0.0	2.2	7.2	2.6
	Continued HS	84	625	13.4	12.5	14.5	5.8	18.6
	Dropped out	67	625	10.7	0.0	11.7	4.3	12.3
VAN ZANDT	Graduated	530	631	84.0	90.9	86.7	83.3	80.4
	Received GED	62	631	9.8	6.8	13.3	9.8	8.7
	Continued HS	24	631	3.8	2.3	0.0	4.2	8.7
	Dropped out	15	631	2.4	0.0	0.0	2.7	2.2
VICTORIA	Graduated	849	1,060	80.1	81.3	70.1	88.5	70.0
	Received GED	63	1,060	5.9	0.0	7.9	5.3	7.6
	Continued HS	72	1,060	6.8	13.3	9.8	3.1	8.5
	Dropped out	76	1,060	7.2	5.3	12.2	3.1	13.9
WALKER	Graduated	389	559	69.6	73.1	45.6	75.8	56.4
	Received GED	126	559	22.5	16.9	40.8	18.9	32.7
	Continued HS	32	559	5.7	7.7	9.7	3.7	8.1
	Dropped out	12	559	2.1	2.3	3.9	1.6	2.8
WALLER	Graduated	403	471	85.6	92.2	79.2	84.9	80.5
	Received GED	22	471	4.7	0.0	1.9	8.2	1.6
	Continued HS	16	471	3.4	5.2	5.7	1.6	5.7
	Dropped out	30	471	6.4	2.6	13.2	5.3	12.2
WARD	Graduated	137	155	88.4	87.5	89.9	86.8	83.3
	Received GED	6	155	3.9	0.0	1.4	6.6	5.6
	Continued HS	6	155	3.9	12.5	2.9	3.9	2.8
	Dropped out	6	155	3.9	0.0	5.8	2.6	8.3
WASHINGTON	Graduated	346	373	92.8	87.8	79.2	95.4	89.8
	Received GED	9	373	2.4	2.4	0.0	2.7	1.7
	Continued HS	11	373	2.9	6.1	4.2	1.9	3.4
	Dropped out	7	373	1.9	3.7	16.7	0.0	5.1
WEBB	Graduated	2,320	2,749	84.4	-	84.2	89.9	84.2
	Received GED	36	2,749	1.3	-	1.3	2.5	1.1
	Continued HS	256	2,749	9.3	-	9.5	3.8	9.4
	Dropped out	137	2,749	5.0	-	5.0	3.8	5.3
WHARTON	Graduated	545	609	89.5	90.8	81.3	93.3	82.0
	Received GED	32	609	5.3	0.8	8.8	5.1	5.3
	Continued HS	27	609	4.4	5.9	9.4	1.3	10.0
	Dropped out	5	609	0.8	2.5	0.6	0.3	2.7
WHEELER	Graduated	61	65	93.8	-	72.7	100.0	90.5
	Received GED	0	65	0.0	-	0.0	0.0	0.0
	Continued HS	2	65	3.1	-	9.1	0.0	4.8
	Dropped out	2	65	3.1	-	18.2	0.0	4.8

Note. A dash (-) indicates data are not reported to protect student anonymity.

Table 2. Longitudinal Dropout and Completion Rates, Grades 9-12, by Student Group,
Class of 2002: County Listing

County	Final Status	Number	Number in Cohort	Rate %				
				All Students	Afr. Am.	Hispanic	White	Econ. Dis.
WICHITA	Graduated	1,405	1,658	84.7	87.5	78.5	85.1	77.2
	Received GED	132	1,658	8.0	5.1	9.1	8.5	10.2
	Continued HS	48	1,658	2.9	1.7	3.3	2.8	4.5
	Dropped out	73	1,658	4.4	5.7	9.1	3.6	8.2
WILBARGER	Graduated	163	216	75.5	88.2	69.6	75.2	65.7
	Received GED	44	216	20.4	5.9	21.7	22.1	25.7
	Continued HS	5	216	2.3	0.0	4.3	2.0	4.3
	Dropped out	4	216	1.9	5.9	4.3	0.7	4.3
WILLACY	Graduated	268	354	75.7	-	74.8	89.5	74.8
	Received GED	12	354	3.4	-	3.6	0.0	3.4
	Continued HS	41	354	11.6	-	12.3	0.0	13.4
	Dropped out	33	354	9.3	-	9.3	10.5	8.4
WILLIAMSON	Graduated	3,652	4,118	88.7	90.2	78.3	90.5	74.8
	Received GED	161	4,118	3.9	0.8	4.6	4.2	4.9
	Continued HS	204	4,118	5.0	5.9	11.4	3.5	13.4
	Dropped out	101	4,118	2.5	3.1	5.7	1.7	6.9
WILSON	Graduated	448	519	86.3	83.3	78.3	90.8	76.5
	Received GED	17	519	3.3	0.0	3.3	3.4	7.6
	Continued HS	27	519	5.2	0.0	10.0	2.8	7.6
	Dropped out	27	519	5.2	16.7	8.3	3.1	8.3
WINKLER	Graduated	116	123	94.3	-	93.0	95.2	89.2
	Received GED	3	123	2.4	-	0.0	4.8	2.7
	Continued HS	4	123	3.3	-	7.0	0.0	8.1
	Dropped out	0	123	0.0	-	0.0	0.0	0.0
WISE	Graduated	502	528	95.1	-	95.0	95.2	92.3
	Received GED	12	528	2.3	-	0.0	2.6	3.1
	Continued HS	13	528	2.5	-	5.0	1.9	4.6
	Dropped out	1	528	0.2	-	0.0	0.2	0.0
WOOD	Graduated	391	419	93.3	93.8	96.3	93.0	93.9
	Received GED	11	419	2.6	0.0	0.0	3.1	1.2
	Continued HS	10	419	2.4	6.3	0.0	2.2	3.7
	Dropped out	7	419	1.7	0.0	3.7	1.7	1.2
YOAKUM	Graduated	151	161	93.8	-	91.5	96.9	90.3
	Received GED	0	161	0.0	-	0.0	0.0	0.0
	Continued HS	5	161	3.1	-	4.3	1.5	3.2
	Dropped out	5	161	3.1	-	4.3	1.5	6.5
YOUNG	Graduated	196	225	87.1	-	84.6	87.3	67.6
	Received GED	15	225	6.7	-	0.0	7.6	17.6
	Continued HS	10	225	4.4	-	7.7	4.1	5.9
	Dropped out	4	225	1.8	-	7.7	1.0	8.8
ZAPATA	Graduated	176	204	86.3	-	85.3	100.0	83.9
	Received GED	4	204	2.0	-	2.1	0.0	2.6
	Continued HS	7	204	3.4	-	3.7	0.0	3.9
	Dropped out	17	204	8.3	-	8.9	0.0	9.7
ZAVALA	Graduated	114	139	82.0	-	83.0	-	82.1
	Received GED	4	139	2.9	-	3.0	-	2.8
	Continued HS	8	139	5.8	-	5.2	-	4.7
	Dropped out	13	139	9.4	-	8.9	-	10.4

Note. A dash (-) indicates data are not reported to protect student anonymity.

Notes on Tables 1 and 2

Cohort

TEA longitudinal secondary school student status rates are based on a Grade 7 or Grade 9 cohort. A 1998-99 Grade 9 cohort, for example, consists of all students who attended Grade 9 in a Texas public school for the first time during the 1998-99 school year. The cohort is named based on the expected year of graduation. In our example, this is the class of 2002. Each member of the cohort is tracked through the fall of 2002, and a final status is assigned. Students who transfer out are removed from the cohort. Students who transfer in on grade-level—for example, into Grade 10 in 1999-00—are added to the cohort. The final status assigned may be: graduate, General Educational Development (GED) certificate recipient, continuing, or dropout. Students with any other final statuses, or without final statuses, are removed from the cohort.

Continuing Student

A continuing student is one who was enrolled in a Texas public school in the fall of the school year following expected graduation.

Dropout

Dropouts are defined and counted according to the *2002-2003 Public Education Information Management System Data Standards* (TEA, 2002) and *Secondary School Completion and Dropouts in Texas Public Schools, 2001-02* (TEA, 2003a). A student who dropped out but later returned or received a diploma or GED certificate is counted based on his or her final status, not as a dropout.

Economically Disadvantaged

The number of students eligible for free or reduced-price lunch or eligible for other public assistance as defined in the *2002-2003 Public Education Information Management System Data Standards* (TEA, 2002) is used as a proxy for the number of economically disadvantaged students. Eligibility for free or reduced price lunch or other public assistance is reported for each student at the time of enrollment.

Ethnicity/Race

Ethnicity/race is one of the demographic characteristics reported for each student at the time of enrollment.

GED Recipient

A GED recipient is a student awarded a GED certificate.

Graduate

A graduate is a student awarded a high school diploma by a Texas public school.

Total Students

Total students reported is a cumulative total of students served at the campus, or in the district, county, or state, during the school year.

Figure 1
Comparing Annual and Longitudinal Dropout Counts
at the District or Campus Level

Figure 1
Comparing Annual and Longitudinal Dropout Counts at the District or Campus Level

This chart demonstrates how annual counts of official dropouts are related to the number of dropouts in the longitudinal rate at the district or campus level. The numbers provided in this chart are for illustration only. See facing page for a detailed explanation of each element in the chart.

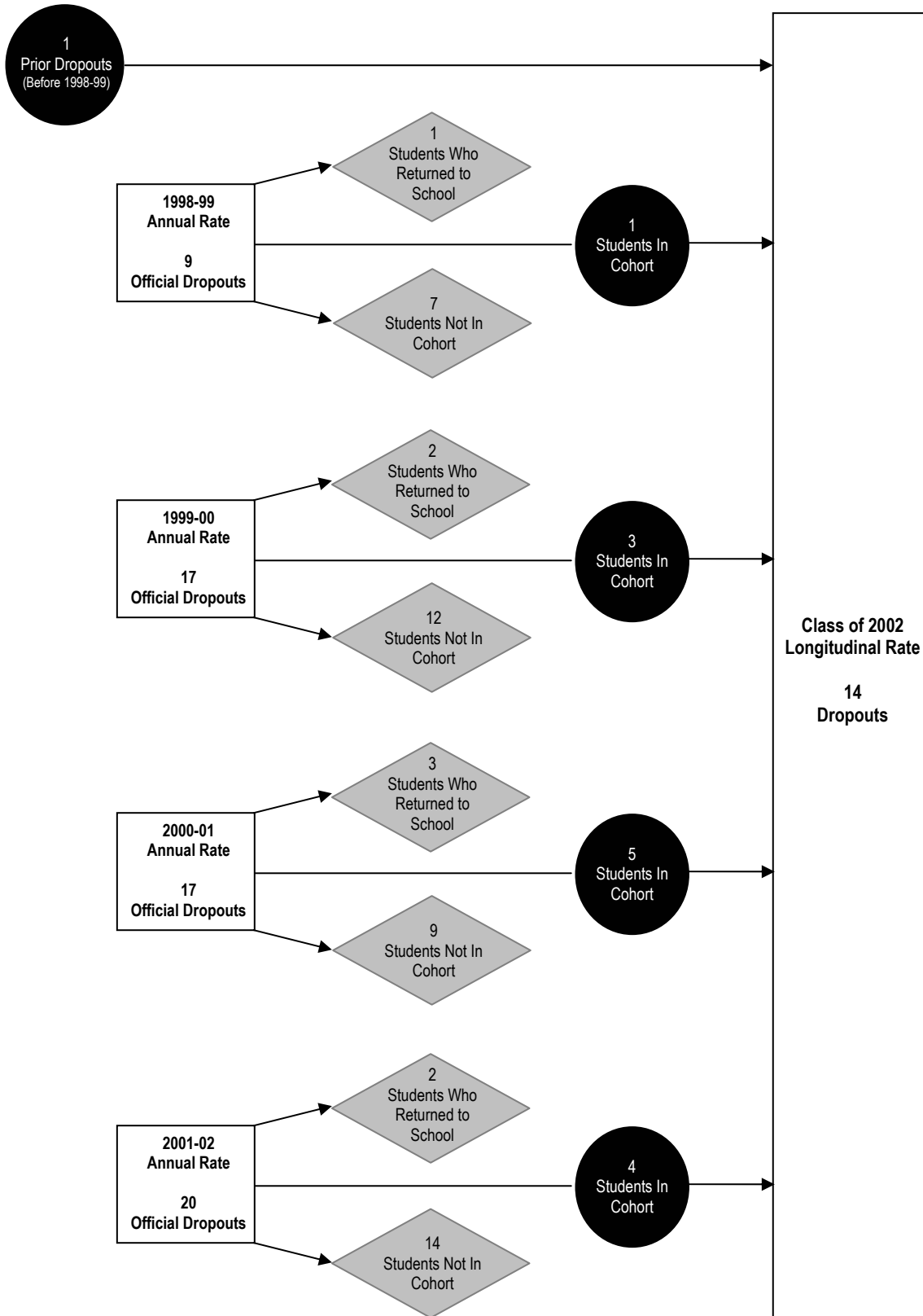
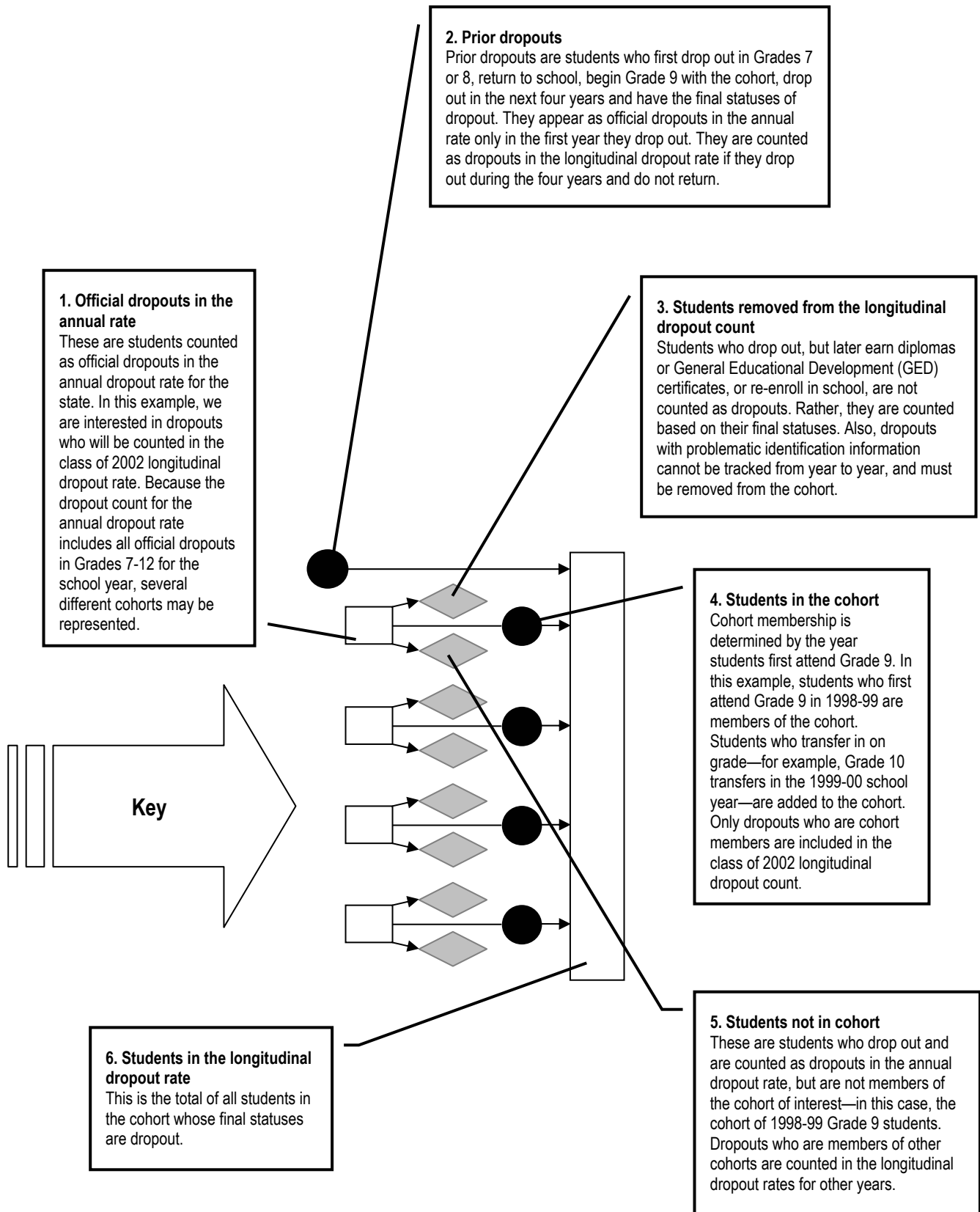


Figure 1 (continued)
Comparing Annual and Longitudinal Dropout Counts at the District or Campus Level



References

- Texas Education Agency. (2002). *2002-2003 Public Education Information Management System data standards*. (Document No. TI02 616 02). Austin, TX: Author.
- Texas Education Agency. (2003a). *Secondary school completion and dropouts in Texas public schools, 2001-02*. (Document No. GE03 601 04). Austin, TX: Author.
- Texas Education Agency. (2003b). *Secondary school completion and dropouts in Texas public schools, 2001-02: District and campus listings*. (Document No. GE03 601 06). Austin, TX: Author.
- Texas Education Agency. (2003c). *Secondary school completion and dropouts in Texas public schools, 2001-02: Supplemental district data*. (Document No. GE03 601 05). Austin, TX: Author.

Texas Education Agency Publication Order Form

Purchaser Name _____ Date _____

Send to (name, if different) _____

Address _____

City _____ State ____ Zip _____

Publications in this Series						
Publication Number and Title	Available in PDF*	Quantity	Price Per Copy	Tax Exempt Only		Cost
				Quantity	Price Per Copy	
GE03 601 04 Secondary School Completion and Dropouts in Texas Public Schools, 2001-02	Yes	_____	\$16.00	_____	\$15.00	_____
GE03 601 05 Secondary School Completion and Dropouts in Texas Public Schools, 2001-02: Supplemental District Data	Yes	_____	\$32.00	_____	\$30.00	_____
GE03 601 06 Secondary School Completion and Dropouts in Texas Public Schools, 2001-02: District and Campus Listings	Yes	_____	\$49.00	_____	\$46.00	_____
GE03 601 07 Secondary School Completion and Dropouts in Texas Public Schools, 2001-02: County Listings	Yes	_____	\$12.00	_____	\$11.00	_____
*Copy of report can be downloaded and printed from http://www.tea.state.tx.us/research/					Subtotal	_____
					(from pages 2 & 3)	
					Total	_____

Price includes postage, handling, and applicable state tax. Make check or money order payable to Texas Education Agency.

For publication inquiries and purchase orders† send to:

**Texas Education Agency
Publications Distribution
1701 North Congress Avenue
Austin, Texas 78701-1494**

†Purchase orders are accepted only from Texas educational institutions and government agencies.

If you are mailing a check or money order, remit this form with payment to:

**Texas Education Agency
Publications Distribution
P.O. Box 13817
Austin, Texas 78711-3817**

See following two pages for publications on related topics



Publications on Related Topics from Research and Evaluation

(Note: Quantities are limited)

Publication Number and Title	Available in PDF*	Quantity	Price Per Copy	Tax Exempt Only		Cost
				Quantity	Price Per Copy	
Dropouts						
GE5 601 09 1992-93 Report on Public School Dropouts	No	_____	\$1.00	_____	\$1.00	_____
GE6 601 01 1993-94 Report on Public School Dropouts	No	_____	\$2.00	_____	\$2.00	_____
GE6 601 08 1994-95 Report on Public School Dropouts	No	_____	\$6.00	_____	\$6.00	_____
GE7 601 08 1995-96 Report on Public School Dropouts	No	_____	\$9.00	_____	\$8.00	_____
GE8 601 05 1996-97 Report on Public School Dropouts	Yes	_____	\$9.50	_____	\$8.50	_____
GE9 601 03 1997-98 Report on Public School Dropouts	Yes	_____	\$10.75	_____	\$10.00	_____
GE01 600 02 Dropout Study: A Report to the 77th Texas Legislature	Yes	_____	No charge	_____	No charge	No charge
GE01 601 02 Secondary School Completion and Dropouts in Texas Public Schools, 1998-99	Yes	_____	\$12.50	_____	\$11.50	_____
GE01 601 03 Secondary School Completion and Dropouts in Texas Public Schools, 1998-99: Supplemental District Data	Yes	_____	\$26.50	_____	\$24.50	_____
GE01 601 04 Secondary School Completion and Dropouts in Texas Public Schools, 1998-99: District and Campus Listings	Yes	_____	\$34.00	_____	\$31.00	_____
GE01 601 05 Secondary School Completion and Dropouts in Texas Public Schools, 1998-99: County, District, and Campus Listings	Yes	_____	\$43.50	_____	\$40.00	_____
GE01 601 09 Secondary School Completion and Dropouts in Texas Public Schools, 1999-00	Yes	_____	\$14.50	_____	\$13.00	_____
GE03 601 02 Secondary School Completion and Dropouts in Texas Public Schools, 1999-00: National Center for Education Statistics State and District Dropout Counts and Rates	Yes	_____	\$14.00	_____	\$13.00	_____
GE01 601 10 Secondary School Completion and Dropouts in Texas Public Schools, 1999-00: Supplemental District Data	Yes	_____	\$30.00	_____	\$28.00	_____
GE01 601 11 Secondary School Completion and Dropouts in Texas Public Schools, 1999-00: District and Campus Listings	Yes	_____	\$47.50	_____	\$44.00	_____
					Subtotal	_____

*Copy of report can be downloaded and printed from <http://www.tea.state.tx.us/research/>

Publications on Related Topics from Research and Evaluation

(Note: Quantities are limited)

Publication Number and Title	Available in PDF*	Quantity	Price Per Copy	Tax Exempt Only		Cost
				Quantity	Price Per Copy	
Dropouts						
GE01 601 12 Secondary School Completion and Dropouts in Texas Public Schools, 1999-00: County Listings	Yes	_____	\$22.50	_____	\$21.00	_____
GE02 601 05 Secondary School Completion and Dropouts in Texas Public Schools, 2000-01	Yes	_____	\$16.00	_____	\$15.00	_____
GE02 601 06 Secondary School Completion and Dropouts in Texas Public Schools, 2000-01: Supplemental District Data	Yes	_____	\$32.00	_____	\$30.00	_____
GE02 601 07 Secondary School Completion and Dropouts in Texas Public Schools, 2000-01: District and Campus Listings	Yes	_____	\$49.00	_____	\$46.00	_____
GE02 601 08 Secondary School Completion and Dropouts in Texas Public Schools, 2000-01: County Listings	Yes	_____	\$12.00	_____	\$11.00	_____
Retention						
GE5 601 12 Report on Grade Level Retention of Texas Students, 1992-93 and 1993-94	No	_____	\$1.00	_____	\$1.00	_____
GE7 601 01 1994-95 Report on Grade Level Retention of Texas Students	No	_____	\$6.00	_____	\$6.00	_____
GE8 601 01 1995-96 Report on Grade Level Retention of Texas Students	No	_____	\$11.00	_____	\$10.00	_____
GE8 601 07 1996-97 Report on Grade Level Retention of Texas Students	Yes	_____	\$10.00	_____	\$9.25	_____
GE9 601 02 1997-98 Report on Grade Level Retention of Texas Students	Yes	_____	\$9.50	_____	\$8.75	_____
GE01 601 07 Grade-Level Retention in Texas Public Schools, 1998-99	Yes	_____	\$17.00	_____	\$16.00	_____
GE02 601 03 Grade-Level Retention in Texas Public Schools, 1999-00	Yes	_____	\$19.00	_____	\$18.00	_____
GE02 601 09 Grade-Level Retention in Texas Public Schools, 2000-01	Yes	_____	\$19.00	_____	\$18.00	_____
					Subtotal	_____

*Copy of report can be downloaded and printed from <http://www.tea.state.tx.us/research/>

Compliance Statement

Title VI, Civil Rights Act of 1964, the Modified Court Order, Civil Action 5281, Federal District Court, Eastern District of Texas, Tyler Division.

Reviews of local education agencies pertaining to compliance with Title VI Civil Rights Act of 1964 and with specific requirements of the Modified Court Order, Civil Action No. 5281, Federal District Court, Eastern District of Texas, Tyler Division are conducted periodically by staff representatives of the Texas Education Agency. These reviews cover at least the following policies and practices:

1. acceptance policies on student transfers from other school districts;
2. operation of school bus routes or runs on a nonsegregated basis;
3. nondiscrimination in extracurricular activities and the use of school facilities;
4. nondiscriminatory practices in the hiring, assigning, promoting, paying, demoting, reassigning, or dismissing of faculty and staff members who work with children;
5. enrollment and assignment of students without discrimination on the basis of race, color, or national origin;
6. nondiscriminatory practices relating to the use of a student's first language; and
7. evidence of published procedures for hearing complaints and grievances.

In addition to conducting reviews, the Texas Education Agency staff representatives check complaints of discrimination made by a citizen or citizens residing in a school district where it is alleged discriminatory practices have occurred or are occurring.

Where a violation of Title VI of the Civil Rights Act is found, the findings are reported to the Office for Civil Rights, U.S. Department of Education.

If there is a direct violation of the Court Order in Civil Action No. 5281 that cannot be cleared through negotiation, the sanctions required by the Court Order are applied.

Title VII, Civil Rights Act of 1964 as Amended by the Equal Employment Opportunity Act of 1972; Executive Orders 11246 and 11375; Equal Pay Act of 1964; Title IX, Education Amendments; Rehabilitation Act of 1973 as Amended; 1974 Amendments to the Wage-Hour Law Expanding the Age Discrimination in Employment Act of 1967; Vietnam Era Veterans Readjustment Assistance Act of 1972 as Amended; Immigration Reform and Control Act of 1986; Americans With Disabilities Act of 1990; and the Civil Rights Act of 1991.

The Texas Education Agency shall comply fully with the nondiscrimination provisions of all federal and state laws, rules, and regulations by assuring that no person shall be excluded from consideration for recruitment, selection, appointment, training, promotion, retention, or any other personnel action, or be denied any benefits or participation in any educational programs or activities which it operates on the grounds of race, religion, color, national origin, sex, disability, age, or veteran status (except where age, sex, or disability constitutes a bona fide occupational qualification necessary to proper and efficient administration). The Texas Education Agency is an Equal Opportunity/Affirmative Action employer.



**Texas Education Agency
1701 North Congress Avenue
Austin, Texas 78701-1494**

**Document No. GE03 601 07
August 2003**