

The background of the slide is a photograph of a school hallway. On the left, a group of students is gathered in a hallway. In the center and right, a wide staircase with metal railings is visible. Several students are walking up and down the stairs. Large windows on the right side of the hallway offer a view of trees and a building outside. A semi-transparent blue rectangular box is overlaid on the center of the image, containing the text.

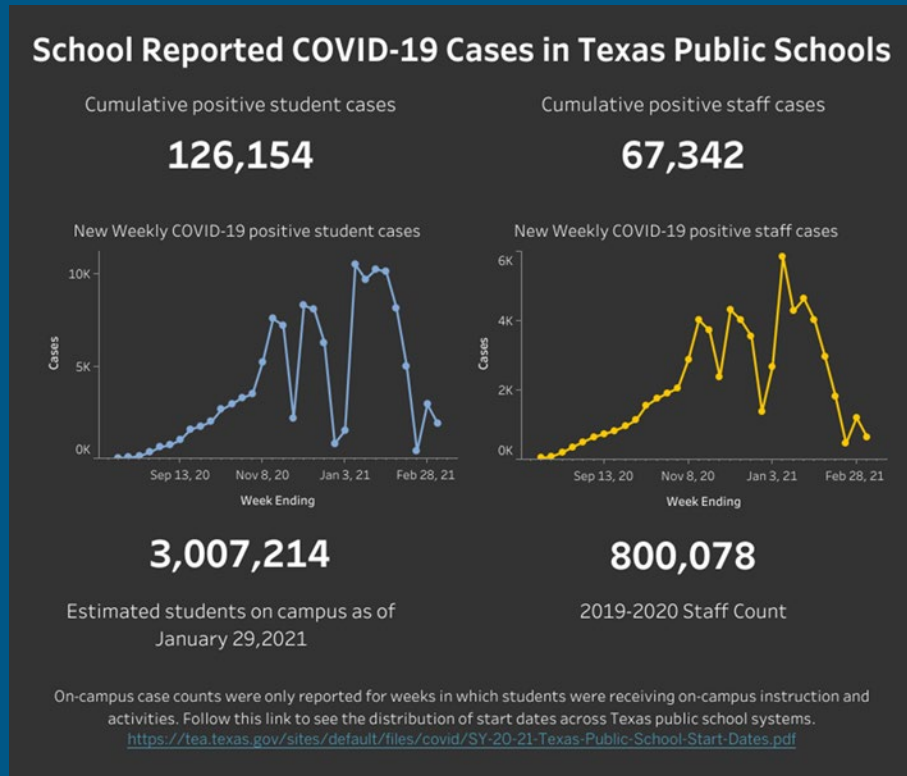
G/T Tuesday

Special Populations – Gifted/Talented Education

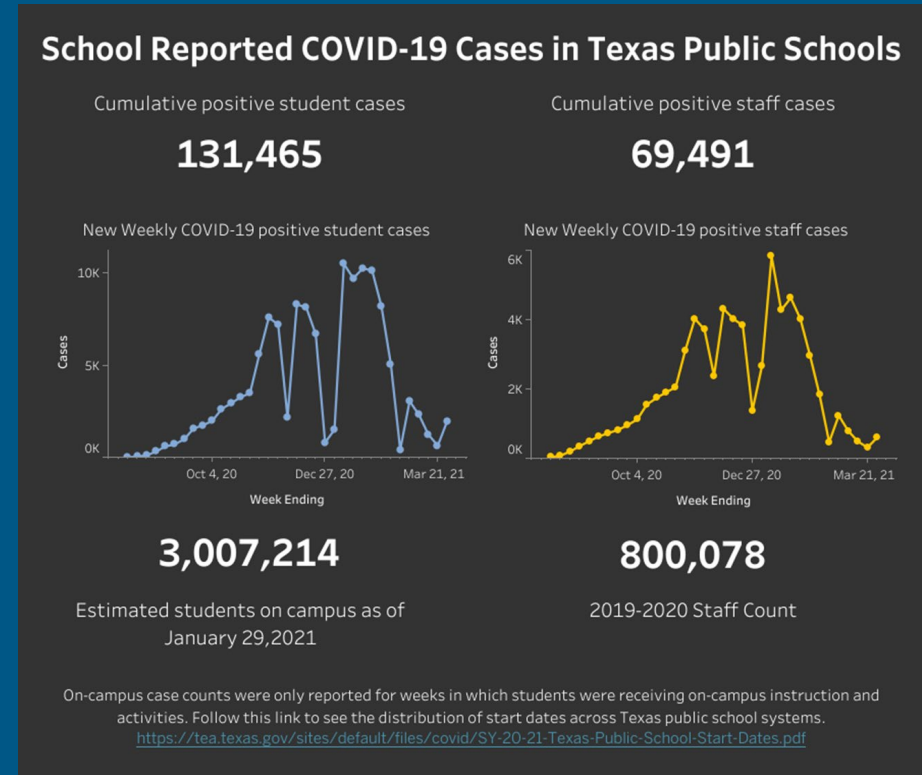
April 6, 2021

- G/T Information
- Certification Process
- Data Sources and Review
- District Happenings and Shout Outs
- Resources

3/16/2021



4/5/2021



<https://dshs.texas.gov/coronavirus/schools/texas-education-agency/>

Wellness Check

Main Page

- <https://tea.texas.gov/texas-schools/health-safety-discipline/coronavirus-covid-19-support-and-guidance>

- <https://tea.texas.gov/texas-schools/health-safety-discipline/instructional-continuity-planning>

SPED and Special Populations

- <https://tea.texas.gov/texas-schools/health-safety-discipline/special-education-and-special-populations>

- In 2021, participants must register in advance for the meetings. The links below are the Spring registration links for the G/T Tuesdays.

Morning Edition @ 9:00 am starting at 1/5/2021

- <https://us02web.zoom.us/meeting/register/tZwsduChpz8jHdYl-0uCzYcOzmQV72ltl261>

Afternoon Edition @ 1:00 pm starting at 1/19/2021

- <https://us02web.zoom.us/meeting/register/tZckdeGppjwqHt0U1UHwtq3kcjkzVzwXd7tM>

- After registering, you will receive a confirmation email containing information about joining the meeting.

TEA SY 20-21 Gifted/Talented Education Guidance **STRONG START**
 August 24, 2020

(512) 463-9000 | disasterinfo@tea.texas.gov | tea.texas.gov/coronavirus

Gifted/Talented FAQ: Section Topics

Click on the links below to go directly to that section of the FAQ.

- Program Services
- Identification
- Curriculum and Instruction
- Professional Learning
- Family and Community Involvement

Note: This guidance only applies to the 2020-2021 school year and may include updates to guidance provided in response to the COVID-19 pandemic and resulting school closures during the 2019-2020 school year.

Program Services

- What are LEAs responsible for regarding G/T services during school reopening and potential closures?

LEAs should continue providing program services for G/T students. (TEC §29.122(a); 19 TAC §89.3, State Plan (2.16, 3.1, 3.6 & 4.1- Texas G/T State Plan 2019)).
- Who is responsible for G/T coordination?

LEA G/T services are coordinated by appropriately trained G/T education administrators, coordinators, and specialists (G/T Staff).
- Per House Bill 3, Sec 29.124, each school district shall annually certify to the commissioner that the district has established a program for gifted and talented students, that the program is consistent with the Texas State Plan for the Education of Gifted/Talented Students, and the use of funds on the district's program for G/T students. How will this be implemented during the 2020-2021 school year?
 - LEAs will continue to follow the certification process implemented in 2019-2020.
 - Identify and serve G/T students
 - Identify LEA G/T program service options
 - Report the use of G/T funds
 - Submit the plan for G/T services in all learning platforms
 - The agency will roll out the next phase of the certification process as a pilot with LEA trainings for full implementation in 2021-2022.

If you have further questions, please submit them to disasterinfo@tea.Texas.gov and monica.brewer@tea.Texas.gov

TEA Gifted/Talented Education **STRONG START**
 October 15, 2020

(512) 463-9000 | disasterinfo@tea.texas.gov | tea.texas.gov/coronavirus

This guidance only applies to the 2020-2021 school year provided in response to the COVID-19 pandemic.

Local Educational Agencies (LEAs) must provide Gifted and Talented (G/T) services for students in all learning settings. The G/T assessment waiver for new identification ended in May 2020. LEAs are expected to resume the 2019-2020 identification and start the 2020-2021 identification for G/T process.

State Goal for Services for G/T Students
 Students who participate in services designed for G/T students will demonstrate skills in self-directed learning, thinking, research, and communication as evidenced by the development of innovative products and performances that reflect individuality and creativity and are advanced in relation to students of similar age, experience, or environment. High school graduates who have participated in services for G/T students will have produced products and performances of professional quality as part of their program services.

Table of Contents

- Gifted/Talented Education.....1
- Fidelity of Services3
- Student Assessment for G/T Services4
- Continuation of 2019-2020 Assessment4
- Assessment Considerations4
- Community Information7
- Student Placement8
- Service Options9
- Acceleration10
- Remote Instruction10
- Considerations from the field11
- Curriculum & Instruction19
- Differentiated Instruction19
- Cluster and Flexible Grouping20
- Texas Performance Standards Project20
- Adapting or Modifying the Curriculum21
- Twice Exceptional21

<https://tea.texas.gov/sites/default/files/covid/SY-20-21-GT-Guidance.pdf>



<https://public.govdelivery.com/accounts/TXTEA/subscriber/new>

The State definition: “...gifted and talented students” means: a child or youth who performs at or shows the potential for performing at a remarkably high level of accomplishment when compared to others of the same age, experience, or environment and who:

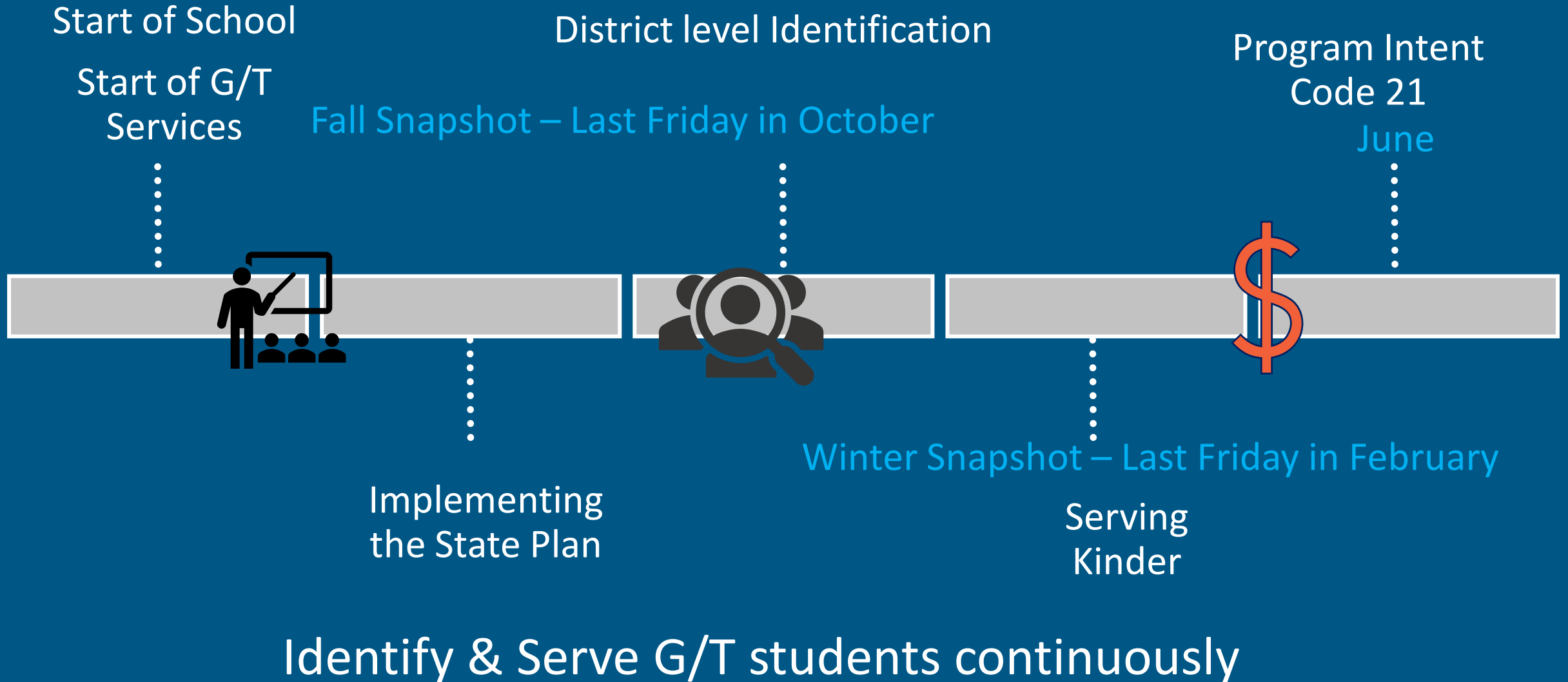
- Exhibits high performance capability in an intellectual, creative, or artistic area,
- Possess an unusual capacity for leadership, or
- Excels in a specific academic field.

Breaking Down the Definition

- How do you define perform?
 - What does shows the potential mean?
 - What is a remarkably high level of accomplishment?
 - How would you describe experience and environment?
- A gifted/talented student is a child or youth who performs at or shows the potential for performing at a remarkably high level of accomplishment when compared to others of the same age, experience, or environment.

Students who participate in services designed for gifted/talented students will demonstrate skills in self-directed learning, thinking, research and communication as evidenced by the development of innovative products and performances that reflect individuality and creativity and are advanced in relation to students of similar age, experience, or environment. High school graduates who have participated in services for gifted/talented students will have produced products and performances of professional quality as part of their program services.

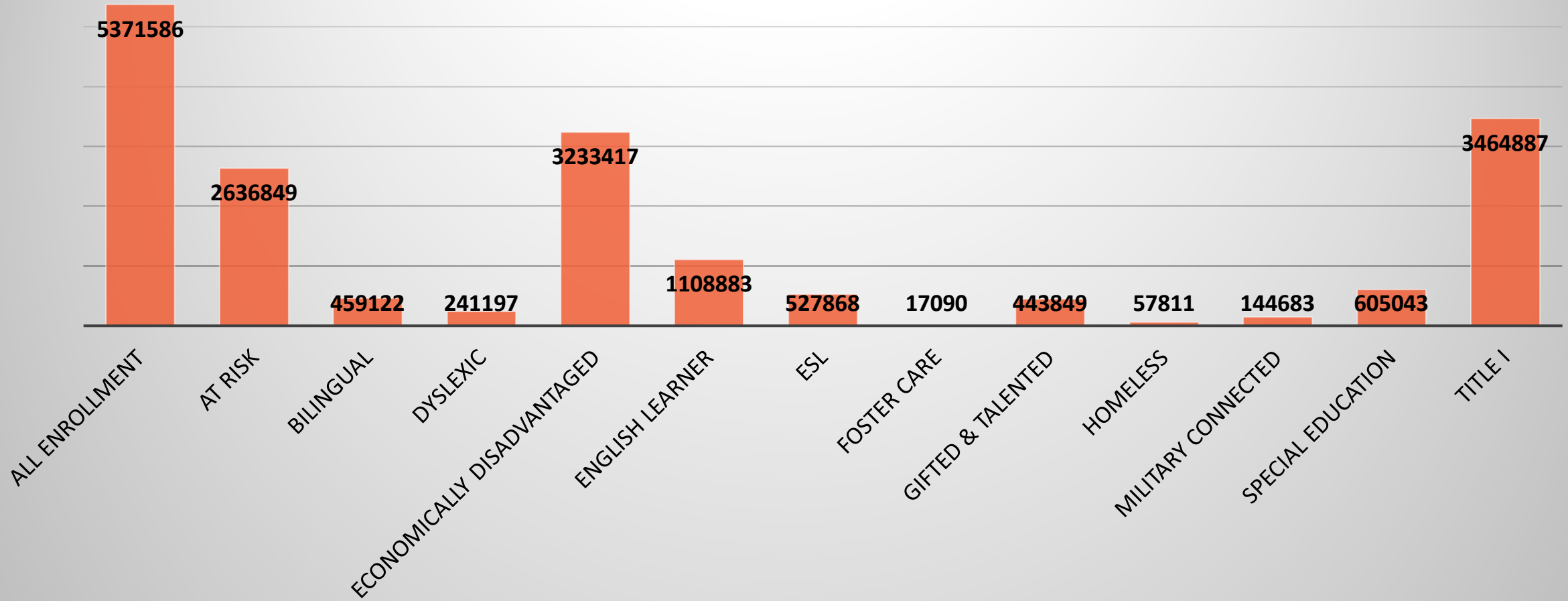
G/T Certification Timeframe



- Annual evaluation activities are conducted for the purpose of continued service development. 1.5
- Ongoing formative and summative evaluation strategies, based on quantitative and qualitative data, are reviewed by the school board and used for substantive program improvement and development. 1.5.1
- Long-range evaluation of services is based on evidence obtained through gifted/talented-appropriate performance measures such as those provided through the Texas Performance Standards Project (TPSP). 1.6
- The development and delivery of curriculum for gifted/talented students is monitored regularly by trained administrators. 1.7

1. What is your program design or options? All levels?
2. What is your current method for identifying students for gifted programming?
3. Who is/was involved in establishing the criteria for identification?
4. Have you made any accommodations to the assessment process for special populations?
5. Who is involved in the selection process?

2020-2021



- How are you receiving your data?
- What results are seeking from the data?
- What is the data telling you?
- What are your points of concern?
- How do you use data findings to drive change?

- [Economically Disadvantaged Reports](#)

Description: Counts of students by economic status: free meals, reduced-price meals, other economic disadvantage, and not economically disadvantaged

- [English Learner \(EL\) Students by Category and Grade](#)

Description: English learner (EL) students by category and grade

- [English Learner \(EL\) Students by Language and Grade](#)

Description: English learner (EL) students by language and grade

- [Foundation High School Program Student Enrollment Reports](#)

Description: Foundation High School Program (FHSP) student enrollments by endorsement combinations, endorsement, distinguished level of achievement, ethnicity, gender, ELL status and grade

- [Student Enrollment Reports](#)

Description: Student enrollment by grade level, gender and ethnicity

- [Student Program and Special Populations Reports](#)

Description: Student enrollment in programs such as gifted/talented (G/T), CTE, ELL, bilingual, English as a second language (ESL), economically disadvantaged, Title I, at-risk, military-connected, foster care, special education, homeless, and dyslexia

Navigating to the Data

TEA Website

www.tea.texas.gov

Reports & Data

[PEIMS Standard Reports](#)

[Enrollment Trends](#)

Reports

[Economically
Disadvantaged](#)

[Student Program Reports](#)

[ELL Students by Category
and Grade](#)

[Student Program and
Special Populations
Reports](#)

Largest G/T Populations at LEA's

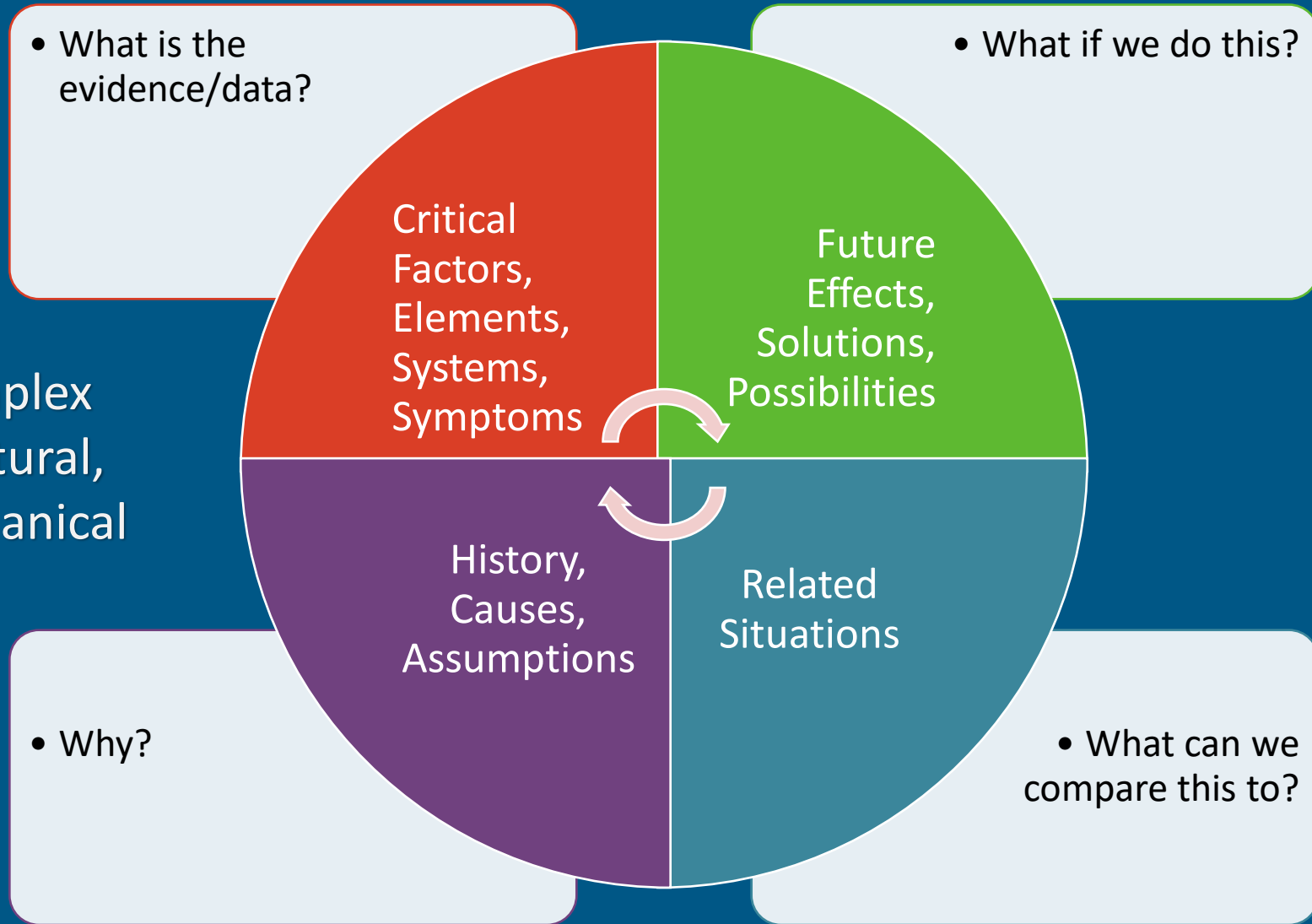


Activity: Data Dig

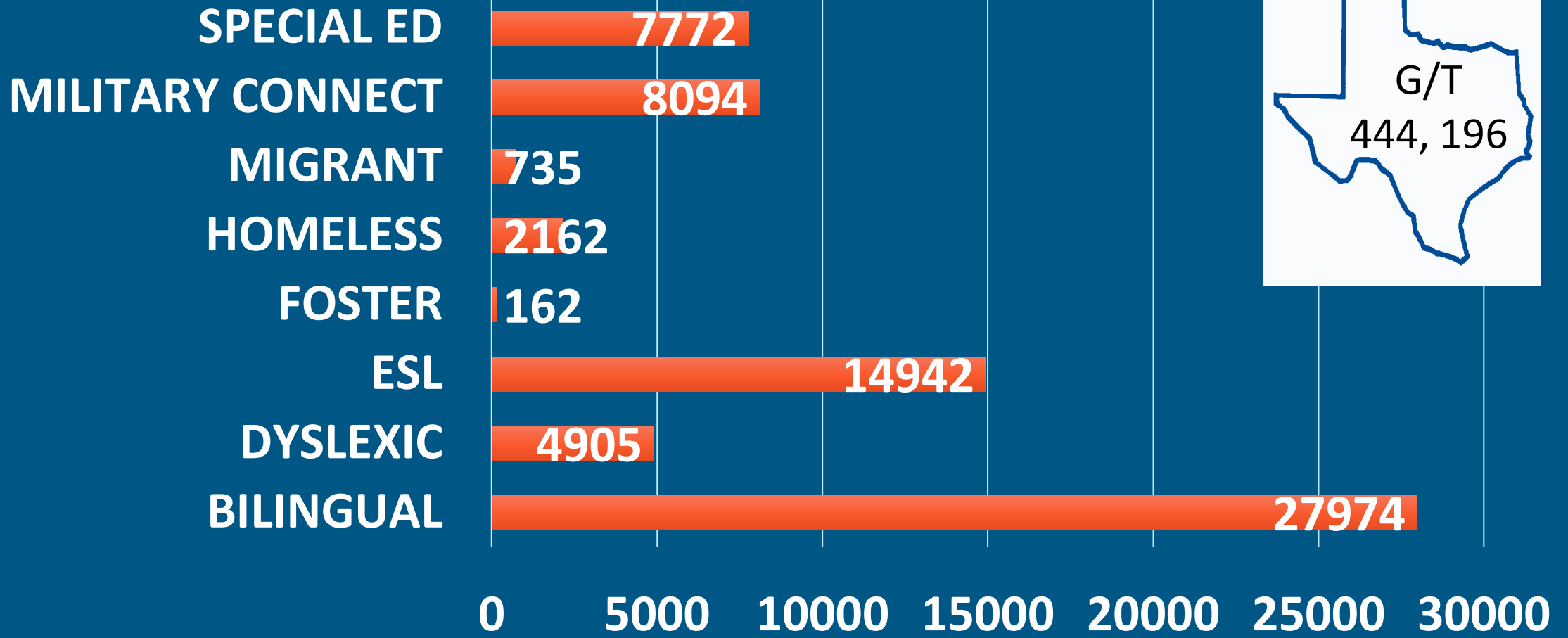
Demographic	Groups	State Total	Regional No	No. G/T:	% G/T:
Ethnic	African American				
	American Indian or Alaska Native				
	Asian				
	Hispanic/Latino				
	Native Hawaiian/Other Pacific				
	White				
	Two or more races				
Gender	Female				
	Male				
Socioeconomic	Economically Disadvantaged				
	Title I				
Linguistic	Bilingual/ESL				
	ELL				
Twice-Exceptional	SPED				
	Dyslexic				

Question Frame Activity

Puzzling, Complex
Situations: Natural,
Personal, Mechanical



Gifted/Talented and Other Populations - 2020



State Populations and G/T Populations

AGGREGATION LEVEL	ALL ENROLLMENT	BILINGUAL	DYSLEXIC	ESL	FOSTER CARE	HOMELESS	MILITARY CONNECTED	SPECIAL EDUCATION
STATE	5,371,586	459,122	241,197	527,868	17,090	57,811	144,683	605,043
G/T	444,196	27,974	4,905	14,942	162	2,162	735	7,772
Percentage	8%	6%	2%	3%	1%	4%	1%	1%





What if?

My question is...

Have you thought
about?

Could we?

Supporting Your Gifted Child and Yourself During Challenging or Stressful Times



WEDS
04.07.21

7-8:30 P.M. ET

• • • **Speakers**

LINDA BRODY, Ed.D.
Director, Study of
Exceptional Talent, CTY



SUSANNA HOLM, M.A.
Program Manager,
CTY International



MICHELLE MURATORI, Ph.D.
Senior Counselor, Study of
Exceptional Talent, CTY



DONNA NEUTZE, Ph.D.
Instructional Designer,
CTY International



**SUPPORTING YOUR
GIFTED CHILD
AND YOURSELF
DURING
CHALLENGING AND
STRESSFUL TIMES**

bit.ly/NAGCCTYPS • • •



HARVARD INTERNATIONAL RELATIONS SCHOLARS

June 17th - 19th, 2021

The nation's top virtual program for high school students passionate about global affairs and international relations.

Attend to sharpen your leadership skills while learning about critical global challenges from senior governmental leaders, renowned Harvard professors, and experts in the field.

APPLY: tinyurl.com/HarvardIRScholarsProgram

April 1st - Early Deadline

May 1st - Final Deadline

Questions? Lexa Brenner at alexabrenner@college.harvard.edu

2019年4月25-27日 中国·北京



Who: G/T High School Students

Benefits: Admitted students will learn from Harvard professors and international relations professionals from around over the world including the United Nations, U.S. National Security Council, European Court of Justice, and more.

More information can be found at

harvardforeignpolicy.org/harvardirscholarsprogram.

The early application deadline is three weeks from today on April 1st. Final deadline is May 1st.

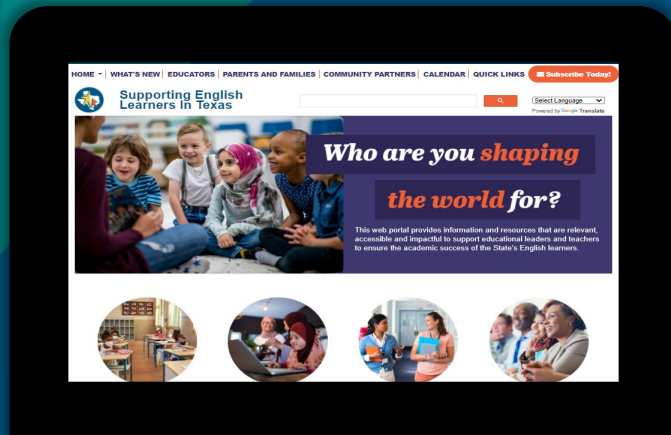
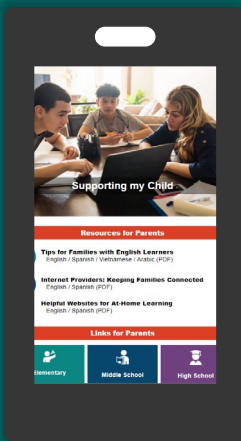


Providing information and resources that are

Relevant, Accessible, and Impactful.

Designed For:

- ✓ Teachers
- ✓ Educational Leaders
- ✓ Families of English Learners
- ✓ English Learners
- ✓ Community Partners





Contact Information

Monica Brewer, M.S.E.

Monica.brewer@tea.texas.gov

GTED@tea.texas.gov

512-475-0626