

A photograph of a school hallway with a blue overlay. The hallway has large windows on the right side, and several students are walking on a set of stairs in the foreground. The text is overlaid on a semi-transparent blue rectangle.

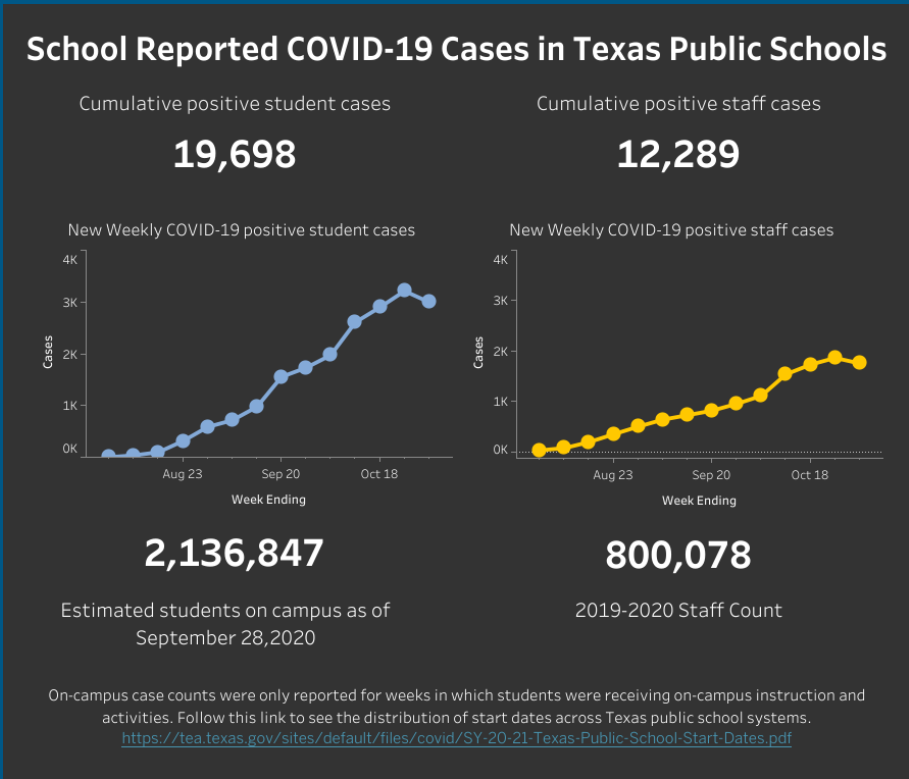
# G/T Tuesday

Special Populations – Gifted/Talented Education

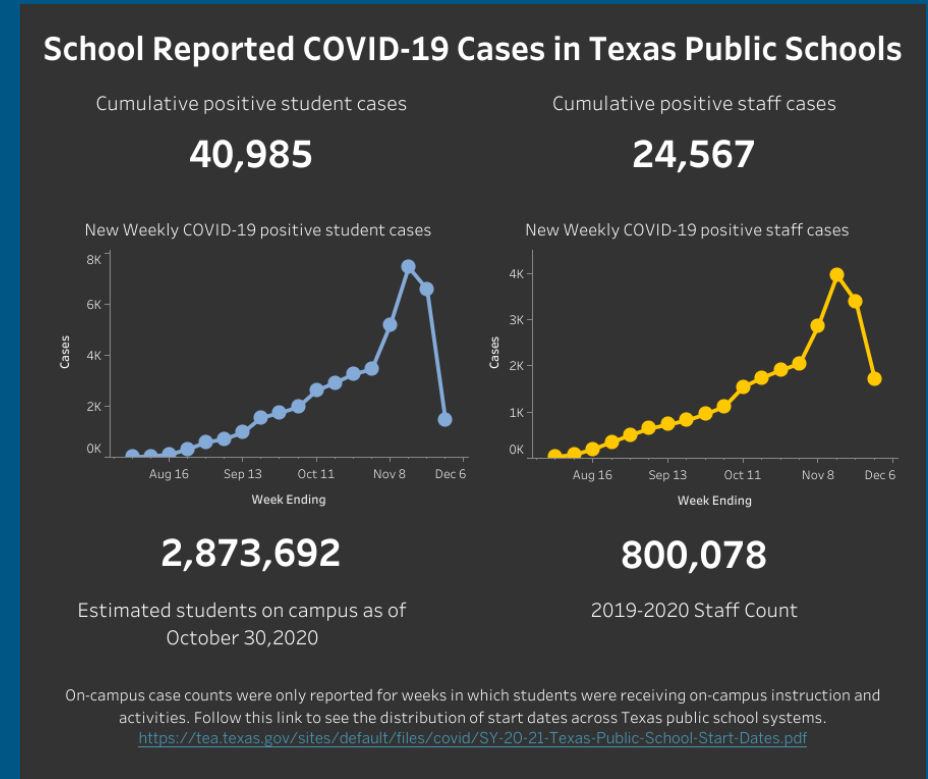
December 8, 2020

- G/T Information
- Question and Answer
- Shout Outs and Happens
- Resources

## 11/8/2020



## 12/7/2020



<https://dshs.texas.gov/coronavirus/schools/texas-education-agency/>

# Wellness Check

## Main Page

- <https://tea.texas.gov/texas-schools/health-safety-discipline/coronavirus-covid-19-support-and-guidance>

## Instructional Continuity Planning

- <https://tea.texas.gov/texas-schools/health-safety-discipline/instructional-continuity-planning>

## SPED and Special Populations

- <https://tea.texas.gov/texas-schools/health-safety-discipline/special-education-and-special-populations>

- In 2021, participants must register in advance for the meetings. The links below are the Spring registration links for the G/T Tuesdays.

Morning Edition @ 9:00 am starting at 1/5/2021

- <https://us02web.zoom.us/meeting/register/tZwsduChpz8jHdYl-0uCzYcOzmQV72ltl261>

Afternoon Edition @ 1:00 pm starting at 1/19/2021

- <https://us02web.zoom.us/meeting/register/tZckdeGppjwqHt0U1UHwtq3kcjkzVzwXd7tM>

- After registering, you will receive a confirmation email containing information about joining the meeting.

**TEA** SY 20-21 Gifted/Talented Education Guidance **STRONG START**  
 August 24, 2020

(512) 463-9000 | disasterinfo@tea.texas.gov | tea.texas.gov/coronavirus

### Gifted/Talented FAQ: Section Topics

Click on the links below to go directly to that section of the FAQ.

- Program Services
- Identification
- Curriculum and Instruction
- Professional Learning
- Family and Community Involvement

**Note:** This guidance only applies to the 2020-2021 school year and may include updates to guidance provided in response to the COVID-19 pandemic and resulting school closures during the 2019-2020 school year.

#### Program Services

- What are LEAs responsible for regarding G/T services during school reopening and potential closures?
 

LEAs should continue providing program services for G/T students. (TEC §29.122(a); 19 TAC §89.3, State Plan (2.16, 3.1, 3.6 & 4.1- Texas G/T State Plan 2019)).
- Who is responsible for G/T coordination?
 

LEA G/T services are coordinated by appropriately trained G/T education administrators, coordinators, and specialists (G/T Staff).
- Per House Bill 3, Sec 29.124, each school district shall annually certify to the commissioner that the district has established a program for gifted and talented students, that the program is consistent with the Texas State Plan for the Education of Gifted/Talented Students, and the use of funds on the district's program for G/T students. How will this be implemented during the 2020-2021 school year?
  - LEAs will continue to follow the certification process implemented in 2019-2020.
    - Identify and serve G/T students
    - Identify LEA G/T program service options
    - Report the use of G/T funds
    - Submit the plan for G/T services in all learning platforms
  - The agency will roll out the next phase of the certification process as a pilot with LEA trainings for full implementation in 2021-2022.

If you have further questions, please submit them to [disasterinfo@tea.Texas.gov](mailto:disasterinfo@tea.Texas.gov) and [monica.brewer@tea.Texas.gov](mailto:monica.brewer@tea.Texas.gov)

**TEA** Gifted/Talented Education **STRONG START**  
 October 15, 2020

(512) 463-9000 | disasterinfo@tea.texas.gov | tea.texas.gov/coronavirus

This guidance only applies to the 2020-2021 school year provided in response to the COVID-19 pandemic.

Local Educational Agencies (LEAs) must provide Gifted and Talented (G/T) services for students in all learning settings. The G/T assessment waiver for new identification ended in May 2020. LEAs are expected to resume the 2019-2020 identification and start the 2020-2021 identification for G/T process.

**State Goal for Services for G/T Students**  
 Students who participate in services designed for G/T students will demonstrate skills in self-directed learning, thinking, research, and communication as evidenced by the development of innovative products and performances that reflect individuality and creativity and are advanced in relation to students of similar age, experience, or environment. High school graduates who have participated in services for G/T students will have produced products and performances of professional quality as part of their program services.

#### Table of Contents

- Gifted/Talented Education.....1
- Fidelity of Services .....3
- Student Assessment for G/T Services .....4
- Continuation of 2019-2020 Assessment .....4
- Assessment Considerations .....4
- Community Information .....7
- Student Placement.....8
- Service Options .....9
- Acceleration .....10
- Remote Instruction .....10
- Considerations from the field .....11
- Curriculum & Instruction .....19
- Differentiated Instruction .....19
- Cluster and Flexible Grouping.....20
- Texas Performance Standards Project.....20
- Adapting or Modifying the Curriculum .....21
- Twice Exceptional .....21

<https://tea.texas.gov/sites/default/files/covid/SY-20-21-GT-Guidance.pdf>



<https://public.govdelivery.com/accounts/TXTEA/subscriber/new>



**The State definition:** “...gifted and talented students” means: a child or youth who performs at or shows the potential for performing at a remarkably high level of accomplishment when compared to others of the same age, experience, or environment and who:

- Exhibits high performance capability in an intellectual, creative, or artistic area,
- Possess an unusual capacity for leadership, or
- Excels in a specific academic field.

Students who participate in services designed for gifted/talented students will demonstrate skills in self-directed learning, thinking, research and communication as evidenced by the development of innovative products and performances that reflect individuality and creativity and are advanced in relation to students of similar age, experience, or environment. High school graduates who have participated in services for gifted/talented students will have produced products and performances of professional quality as part of their program services.



What if?

My question is...

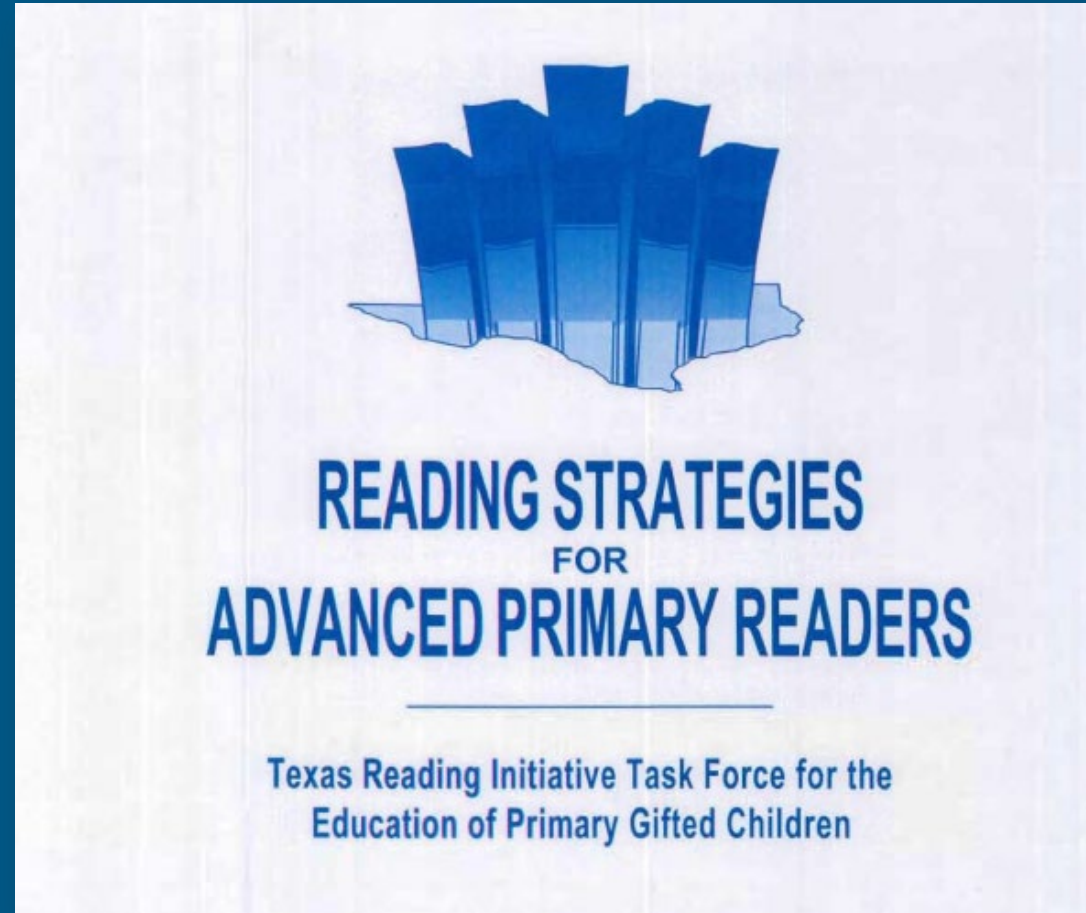
Have you thought  
about?

Could we?

## Reading Academies

- Am I required to participate in the Reading Academies?
  - As a GT specialist that works with students in small groups K-3, you are required to go through the HB3 Reading Academies.
  
- Can Reading Academies count for the 6 hour G/T update?
  - At this time, the Reading Academies do not count for the G/T update.





<https://tea.texas.gov/WorkArea/linkit.aspx?LinkIdentifier=id&ItemID=25769814865>

[Home](#) / [Academics](#) / [Special Student Populations](#) / [Gifted and Talented Education](#)

## Gifted Talented Education Resources

Welcome to the Gifted/Talented Education Resources page pertaining to the implementation of the Texas State Plan for the Education of Gifted/Talented Students.

### G/T Tuesdays Implementation Series

**October 1, 2019**

**Topic: Fidelity of Services: Use of Funds, Comprehensive Manuals, Plan of Action**

[Presentation \(PDF\)](#)

**Recording Link:**

<https://zoom.us/recording/share/uKm-cJVINE71mP1-TI3XK9wmEJ63hyuX8h-89NyNKNCwlumekTziMw>

[Zoom Chat Log \(PDF\)](#)

**Resources and Links from Chat Log**

- <https://tea.texas.gov/academics/special-student-populations/gifted-and-talented-education/gifted-talented-education-resources>



TexasHomeLearning

- Online TEKS aligned curriculum
- Online TEKS aligned resources
- Remote Learning Platform – Schoology or incorporate into LEA platform
- Supports for all learners
- <https://texashomelearning.org/>



[texasprojectrestore.org](https://texasprojectrestore.org)





## ■ Each video:

- 25-35 minutes long
- Include facilitation companion guide
- Transcripts
- Earn CEUs
- Counts toward SB 11 grief and trauma-informed training requirement

■ [www.texasprojectrestore.org](http://www.texasprojectrestore.org)





# Contact Information

Monica Brewer, M.S.E.

[Monica.brewer@tea.texas.gov](mailto:Monica.brewer@tea.texas.gov)

[GTED@tea.texas.gov](mailto:GTED@tea.texas.gov)

512-463-9414