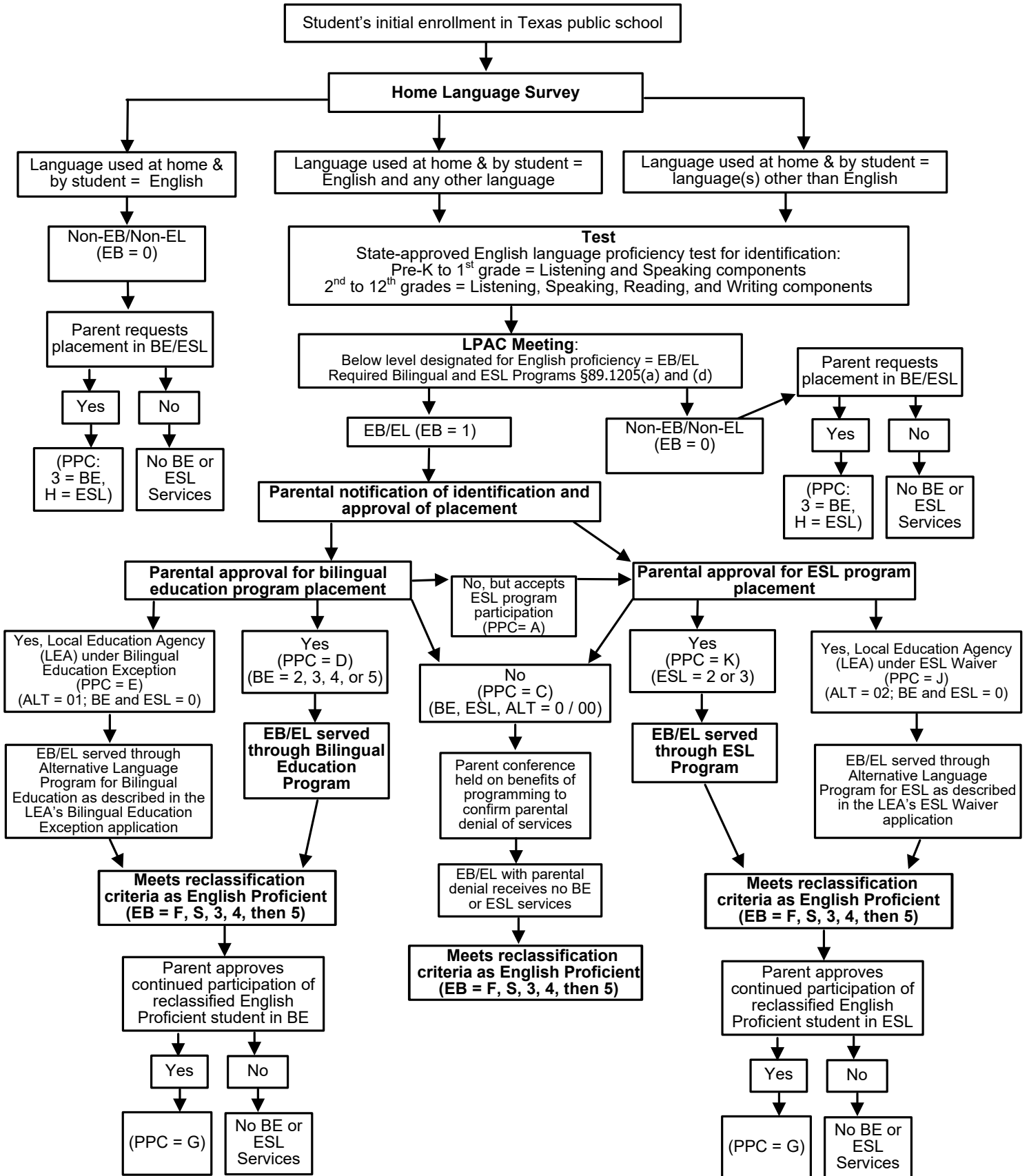


Emergent Bilingual (EB) Student / English Learner (EL) Decision Chart for the Language Proficiency Assessment Committee (LPAC)



EB = Emergent Bilingual Indicator Code PPC = Parental Permission Code BE = Bilingual Education Program Code ESL = English as a Second Language Code ALT = Alternative Language Program Code

**Emergent Bilingual (EB) Student / English Learner (EL) Decision Chart for the Language Proficiency
Assessment Committee (LPAC)**

Accessible Version

The flowchart of decisions made to identify, place, and reclassify emergent bilingual (EB) students / English learners (ELs) is described below for accessibility purposes.

Home Language Survey and Assessment

Upon a student's initial enrollment in Texas public schools, a Home Language Survey (HLS) is administered, asking two questions about what language is used most of the time in the home and by the student.

- If the language used at home and by the student is indicated as English, the student is non-EB / non-EL. The EB Indicator Code is 0. The student does not receive bilingual or English as a second language (ESL) services. However, if the parent requests placement of the non-EB / non-EL student in a bilingual or ESL program, the Parental Permission Code will be 3 for bilingual program participation and H for ESL program participation.
- If the language used at home and by the student is indicated as English and another language or both the language used at home and by the student are indicated as languages other than English, the student will be assessed for English proficiency. The state-approved English language proficiency test for identification is as follows:
 - prekindergarten to first grade will be administered listening and speaking components
 - second grade to twelfth grade will be administered listening, speaking, reading, and writing components.

LPAC Meeting and Placement

If a student was assessed for English proficiency, the LPAC meets to determine classification.

- If the student scores above the level designated for English proficiency, the student is non-EB / non-EL. The EB Indicator Code is 0. The student does not receive bilingual or English as a second language (ESL) services. However, if the parent requests placement of the non-EB / non-EL student in a bilingual or ESL program, the Parental Permission Code will be 3 for bilingual program participation and H for ESL program participation.
- If the student scores below the level designated for English proficiency, the student is identified as EB / EL. The EB Indicator Code is 1. The LPAC will notify the parents / legal guardians of the identification as an emergent bilingual student and will recommend placement in the required bilingual or ESL program, in accordance with Texas Administrative Code, Chapter 89, Subchapter BB, Section 1205 (a) and (b).

Parental Approval for Bilingual Education Program Placement

- If the parent of an identified emergent bilingual student approves placement of the student in the bilingual education program, the Parental Permission Code is D and the Bilingual Education Program Code is 2, 3, 4, or 5, depending on the Local Education Agency's (LEA's) bilingual education program model. The EB student / EL is served through the bilingual education program until the student meets reclassification as English proficient, which will be described later.
- If the parent of an identified emergent bilingual student approves placement of the student in the bilingual education program but the LEA is under a bilingual education exception, the Parental Permission Code is E, the Alternative Language Program Code will be 01, and the Bilingual Education and ESL Program Codes will be 0. The EB student / EL is served through the Alternative Language Program as described in the LEA's bilingual education exception application until the student meets reclassification as English proficient, which will be described later.
- If the parent of an identified emergent bilingual student denies the placement of the student in a bilingual education program but accepts ESL program participation, the Parental Permission Code is A, and program codes are assigned as described in the next section on parental approval for ESL program placement.

Parental Approval for ESL Program Placement

- If the parent of an identified emergent bilingual student approves placement of the student in the ESL program, the Parental Permission Code is K and the ESL Program Code is 2 or 3, depending on the LEA's ESL program model. The EB student / EL is served through the ESL program until the student meets reclassification as English proficient, which will be described later.
- If the parent of an identified emergent bilingual student approves placement of the student in the ESL program but the LEA is under an ESL waiver, the Parental Permission Code is J, the Alternative Language Program Code will be 02, and the Bilingual and ESL Program Codes will be 0. The EB student / EL is served through the Alternative Language Program as described in the LEA's ESL waiver application until the student meets reclassification as English proficient, which will be described later.

Parental Denial of Program Placement

If the parent of an identified emergent bilingual student denies bilingual and ESL program participation, the Parental Permission Code is C, the Bilingual Education and ESL Program Codes are 0, and the Alternative Language Program is 00.

- A parent conference is held, and the benefits of programming are shared to ensure that parental denial of services is an informed decision.
- The EB student / EL with parental denial receives no bilingual education or ESL program services.

Reclassification as English Proficient (EP)

- Once an emergent bilingual student meets reclassification criteria set by the State, the LPAC will reclassify the student as English proficient. This includes emergent bilingual students who were served in a bilingual education or ESL program as well as emergent bilingual students with parental denial of services. Once reclassified, the EB Indicator Code changes to
 - F for the first year of monitoring
 - S for the second year of monitoring
 - 3 for the third year of monitoring
 - 4 for the fourth year of monitoring
 - then code 5 (Former EB / EL) will be used through the duration of his or her schooling in Texas.
- If the parent of a reclassified emergent bilingual / English proficient student approves continued participation in a bilingual or ESL program, the Parental Permission Code is G, and the program code will align with the LEA's bilingual education or ESL program model provided or with an alternative language program if the LEA is under a bilingual education exception or ESL waiver.