

A photograph of a teacher with short dark hair and glasses, wearing a white t-shirt, sitting on the floor and reading a book to two young students. The students are also sitting on the floor, looking at the book. They are in a classroom setting with bookshelves and blue storage bins in the background. The image is semi-transparent, allowing the text to be overlaid.

TCLAS Deep Dive Webinar: Decision 10, New School Models (NSM)

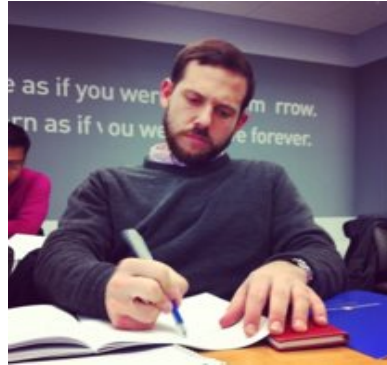
July 15, 2021

Welcome and Thanks for Joining Us Today!



Megha Kansra
Director of System
Support & Innovation

Megha.Kansra@tea.texas.gov



Chris DeWitt
Director
System Support

Christopher.DeWitt@tea.texas.gov



Laura Hyatt
Manager
School Action Fund

Laura.Hyatt@tea.texas.gov



Steven Rachel
District Support Specialist
School Action Fund

Steven.Rachel@tea.texas.gov

Agenda

Recap: What is TCLAS?

Decision Point 10, New School Models (NSM)
Deep Dive

Q&A and Next Steps

A few logistical notes:

- Feel free to enter questions and reactions in the chat box throughout. We will conduct Q&A at the end
- We will follow up with the slides and recording
- All material will be posted on the TEA website

Agenda

Recap: What is TCLAS?

Decision Point 10, New School Models (NSM) Deep Dive

Q&A and Next Steps

Texas COVID Learning Acceleration Supports (TCLAS) is a set of targeted supports and additional state and federal funding aligned to the Learning Acceleration Framework.

LEAs will access TCLAS funding and supports through a single, streamlined discretionary, non-competitive grant application that mimics the simplicity of a formula grant.

- No narrative responses required
- No need for grant writers
- Easy budget calculations

TCLAS provides districts access to:

\$1.4 B

in services and
supports available to
districts

15

TEA initiatives
customized for
learning acceleration

1

district application
to access funding

Accelerated Learning Strategies in TCLAS

Accelerated Learning Strategies

Strategic Planning



Strategic planning and performance management to prioritize, launch, and continuously improve learning acceleration strategies

Instructional Materials



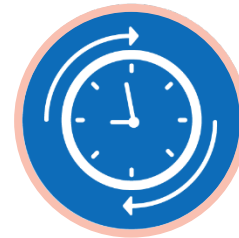
Rigorous, **high-quality instructional materials** designed to make up ground and master grade level TEKS

Teacher Pipelines



Talent pipelines that support teachers to deliver excellence in the classroom, getting more than 1 year of growth in 1 year

More Time



More time for the students most in need, including expanding instructional time in the summer and with targeted **tutoring**

Innovative School Models



Innovative school models to incorporate all aspects of the learning acceleration framework

10 Available Decision Points for Districts in TCLAS

Accelerated Learning Strategies				
Strategic Planning	Instructional Materials	Teacher Pipelines	More Time	Innovative School Models
Decision 1: LEA Accelerated Learning Strategic Planning	Decision 2: HQIM Core Approved Products	Decision 4: Teacher recruitment support	Decision 6: Tutoring Supports	Decision 9: P-TECH
	Choice by Subject/Grade Level	Decision 5: Residency Program Support	Decision 7: School Day/Calendar Redesign	Decision 10: New School Models
Decision 3: HQIM Supplemental Approved Products	Decision 8: Strong Summer Program			
Various Types of Products				
<p><u>Similar TEA Initiatives:</u></p> <ul style="list-style-type: none"> Resilient School Support Program (RSSP) 	<p><u>Similar TEA Initiatives:</u></p> <ul style="list-style-type: none"> Texas Home Learning (THL) / CRIMSI Math Innovation Zones Dyslexia tools Phonics Reading System College Prep Course 	<p><u>Similar TEA Initiatives:</u></p> <ul style="list-style-type: none"> Grow Your Own (GYO) Teacher Residencies 	<p><u>Similar TEA Initiatives:</u></p> <ul style="list-style-type: none"> Additional Days School Year (ADSY) Vetted Texas Tutor Corps 	<p><u>Similar TEA Initiatives:</u></p> <ul style="list-style-type: none"> PTECH Texas Regional Pathways Network School Action Fund (SAF)



Focus for Today's Webinar: Decision Point 10, New School Models (NSM)

Accelerated Learning Strategies

Strategic Planning	Instructional Materials	Teacher Pipelines	More Time	Innovative School Models
Decision 1: LEA Accelerated Learning Strategic Planning	Decision 2: HQIM Core Approved Products	Decision 4: Teacher recruitment support	Decision 6: Tutoring Supports	Decision 9: P-TECH
	Choice by Subject/Grade Level			
	Decision 3: HQIM Supplemental Approved Products Various Types of Products	Decision 5: Residency Program Support	Decision 7: School Day/Calendar Redesign	Decision 10: New School Models
			Decision 8: Strong Summer Program	<i>Today's focus</i>
<u>Similar TEA Initiatives:</u> <ul style="list-style-type: none"> Resilient School Support Program (RSSP) 	<u>Similar TEA Initiatives:</u> <ul style="list-style-type: none"> Texas Home Learning (THL) / CRIMSI Math Innovation Zones Dyslexia tools Phonics Reading System College Prep Course 	<u>Similar TEA Initiatives:</u> <ul style="list-style-type: none"> Grow Your Own (GYO) Teacher Residencies 	<u>Similar TEA Initiatives:</u> <ul style="list-style-type: none"> Additional Days School Year (ADSY) Vetted Texas Tutor Corps 	<u>Similar TEA Initiatives:</u> <ul style="list-style-type: none"> PTECH Texas Regional Pathways Network School Action Fund (SAF)



Agenda

Recap: What is TCLAS?

Decision Point 10, New School Models (NSM)
Deep Dive

Q&A and Next Steps

What is your familiarity with TCLAS and School Action Fund?

Enter a number, 1- 5 with 5 being the highest, in the chat that most applies to you:

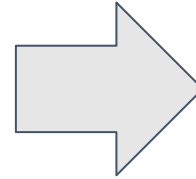
- 1) I have watched other webinars on TCLAS and/or read the TCLAS Guidance Document.
- 2) I am familiar with, or do not know about, SAF.



Why School Actions?

TCLAS New School Models Option: School Action Fund

School Action Fund (SAF): aims to increase the number of students in great schools by providing customized planning and implementation support to districts committed to launching bold, whole school models.

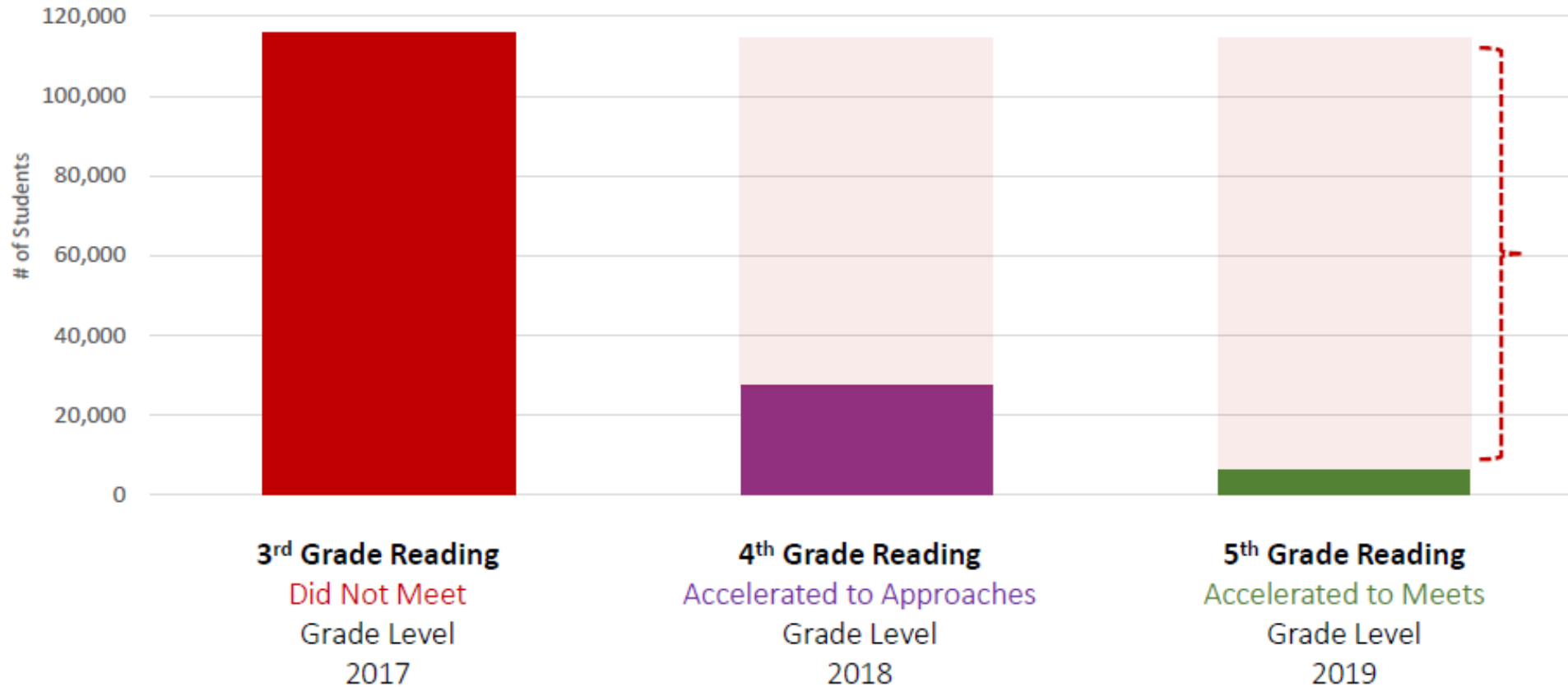


***North Star:** By the end of the 2nd year of implementation, campuses will perform at an A/B level.*



The Actions We Take Now Must Be Different From What We've Done In The Past

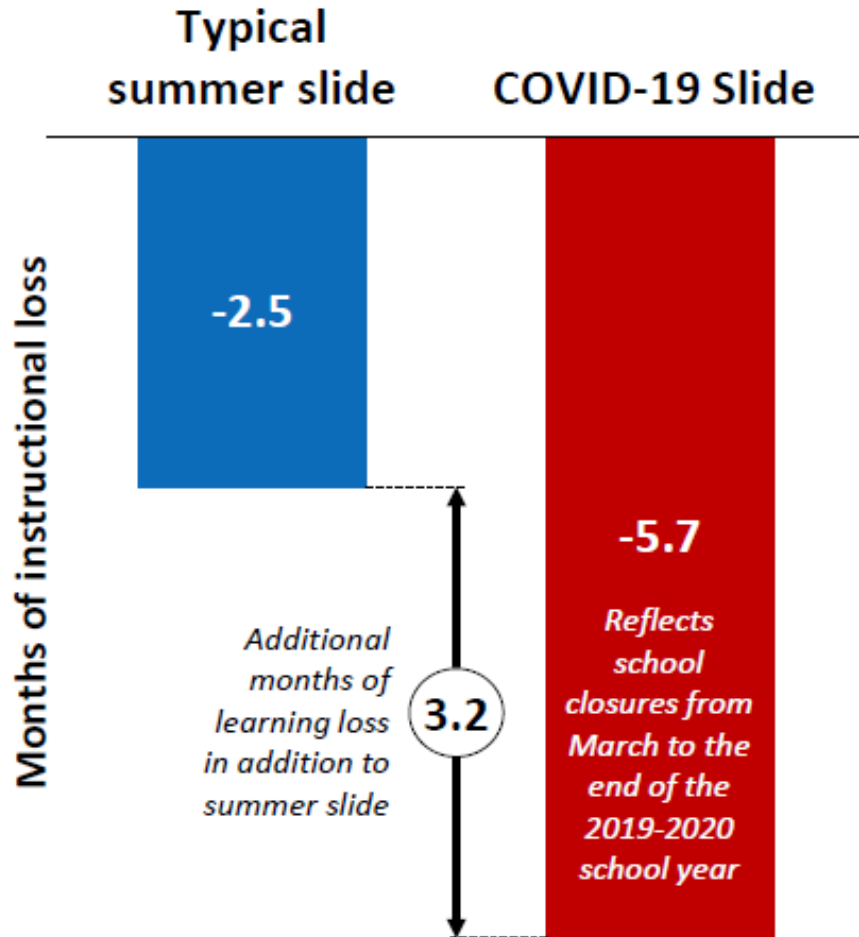
Pre-COVID: # of Students Accelerating Up A Performance Level Each Year



95% of the students who were behind in 3rd grade reading in 2017 did not catch up by 5th grade.

Across all grades and subjects, on average,
only 4% of students who are below grade level catch up to grade level in 2 years

Given Beginning-Of-Year Data, We Are Facing Larger Challenges Than Ever Before

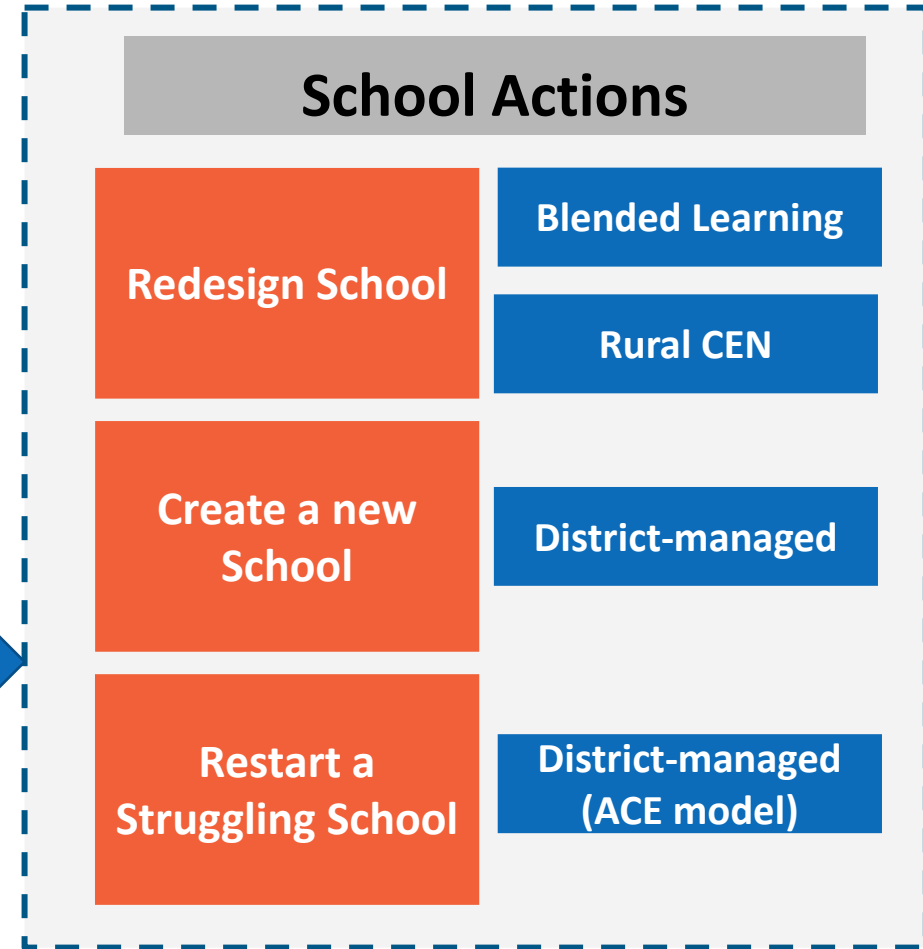
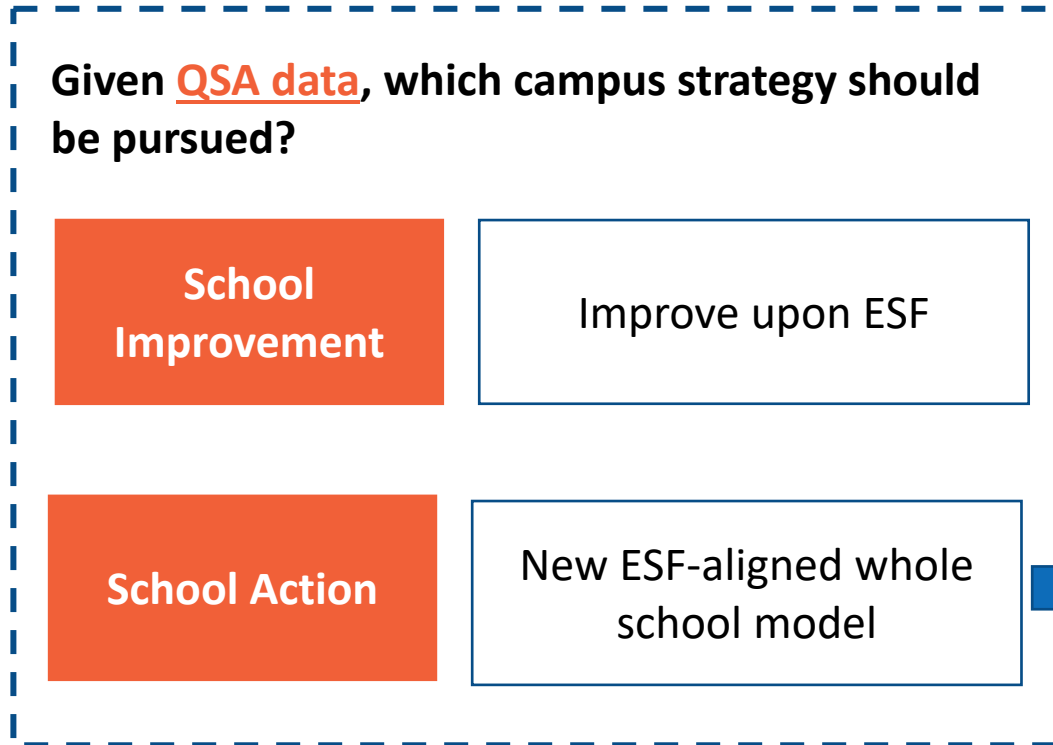


With COVID, the number of students below grade level is likely to increase dramatically.



What are School Actions?

School Improvement or School Action?



Funding: TCLAS SAF Award Amounts



Redesign a School

Blended learning
Rural CEN model

Planning: \$250,000
Continuation:
\$500,000



Create a New School

District-managed

Planning: \$250,000
Continuation: \$1m

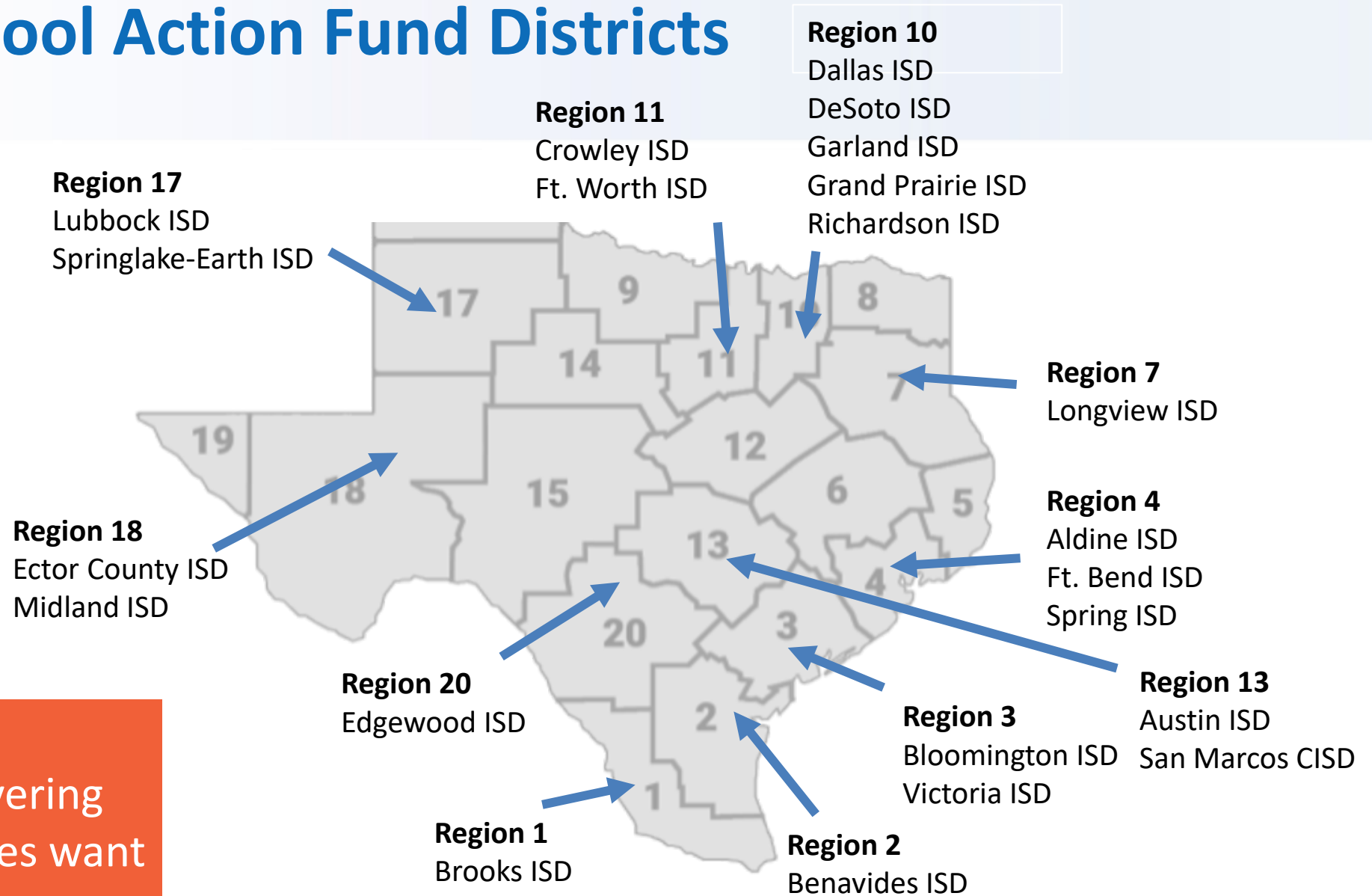


Restart a Struggling School

ACE model

Implementation:
\$750,000

School Action Fund Districts



Key Question:
How are you delivering the schools families want and need?



TCLAS School Action Detail

School Action Models: Common Elements

Regardless of school action model, all school actions include the following components:

1. Effective Schools Framework-aligned school model
2. High-quality instructional materials
3. Student diagnostic assessment
4. High-dosage tutoring
5. Extended day or year

Redesign a Campus with a Blended Learning Model



Blended Learning School Redesigns reimagine school and address learning acceleration needs exacerbated by the COVID-19 pandemic by delivering **high quality instruction through an engaging blended learning model.**

Key Elements

- ✓ District identifies a principal who completes a school redesign process facilitated by TA provider
- ✓ School leaders pilot design elements to ensure success, including blended learning strategies, curriculum, and assessment
- ✓ ESF-aligned school model reviewed and approved by TEA
- ✓ Must provide significant release time for design and planning

Blended Learning Redesign Examples



Technical Assistance Provider:



Spring ISD identified a critical need for more high-quality schools to meet the learning acceleration needs of students. The newly redesigned *Innovation Zone* campuses will feature high-quality instructional materials, blended learning campus-wide, student resiliency supports, and an extended day.

Redesign a Rural Campus with a Collegiate Edu-Nation Model



Rural School Redesigns reimagine rural schools to provide more rigorous, community-responsive experiential learning opportunities

Key Elements

- ✓ District identifies a principal who completes a school redesign process facilitated by TA provider
- ✓ Must evaluate district systems and plan to implement a system-wide P-20 model across the entire district, including a PTECH in secondary grades
- ✓ Eligible LEAs must have 500 or fewer students, a K-8 campus/campuses rated C-F on 2019 TEA ratings, a designated PTECH program, and a designated central office-based redesign coordinator

Rural School Redesign Examples



Technical Assistance Provider:



Based on the transformational model developed in Roscoe Collegiate ISD, the Rural School Redesign Action combines evidence-based curriculum, STEM-focused experiential learning, and authentic community relationships to prepare students for rigorous secondary pathways.

The Rural Redesign Action focuses on PreK-8 and should be paired with a PTECH program in secondary grades.

Create a New School with a District-Designed Model



Creating new schools provides support for campus leaders to design a new school responsive to community needs.

Key Elements

- ✓ District and campus leaders design new school, such as STEM, single gender, or dual language
- ✓ Must identify a school leader to dedicate at least 3 days/week to school design in 2021-2022
- ✓ School must phase in one grade level at a time (or K-1 in elementary)
- ✓ New leader, new staff, district employees
- ✓ Enrollment policies must prioritize enrollment for students attending or zoned to a comprehensive or targeted campus

Create a New School Examples



Commander McCool Academy, Lubbock ISD:
Lubbock ISD identified a critical need for more high-quality middle school seats. After a year-long planning process, campus leaders launched the **STEM-focused middle school** in August 2020.



**ALDINE
YOUNG WOMEN'S
LEADERSHIP ACADEMY**

Aldine ISD:
Aldine ISD identified a critical need for more **high-quality middle school seats specifically to support young women**. Aldine will launch YWLA in August 2021.

Technical Assistance Provider:

School **Empowerment** Network
— LEAD THE CHANGE —



Restart a Struggling School with an ACE Model

(Implementation grants only)



Restarting a school means there will be new teachers and new academic programming, providing a blank slate for the school community to improve student outcomes.

Key Elements

- ✓ ACE Restarts must implement the five core components the ACE model:
 - ✓ Strategic Staffing
 - ✓ Instructional Excellence
 - ✓ Extended Time
 - ✓ Social and emotional learning
 - ✓ Parent and community partnerships
- ✓ Continue to receive implementation support from Commit.

NOTE: TEA will first fund up to one eligible ACE grant per LEA, then fund additional grants until available grants are awarded.

ACE Campus Examples



Handley Elementary School, Garland ISD

School Rating Distinctions:

- Academic Achievement in English, Language, Arts/Reading
- Top 25%: Comparative Academic Growth

Technical Assistance Provider:



Over the first four years (2015-2019), of the ACE initiative, 28 of 29 campuses:

- Met state accountability standards in Year One, in most cases following multiple consecutive years of failure.
- Achieved increases in student growth upwards of 67% in math and 40% in reading.
- Significantly reduced district gaps in achievement, discipline referrals, and suspensions.

A photograph of a school hallway with a wide set of stairs. Several students are walking on the stairs, some going up and some going down. They are wearing backpacks and casual clothing. The hallway has large windows on the right side, letting in bright light. The overall scene is a typical school environment.

TCLAS School Action District Supports

TCLAS SAF Supports for Districts to Plan and Implement School Actions



Planning Support:

Through action-specific TA providers, LEAs receive targeted guidance and support to design a whole-school model that is responsive to community needs.



Tools and Resources:

LEAs access tools and resources like school plan and budget templates, community engagement tools, and resources from related TEA initiatives.



Funding:

School Action Fund grant dollars are used to fund campus and district staff, purchase instructional materials, provide stipends and extra-duty pay for teachers, and other action-related initiatives.

TCLAS SAF Support: Planning Support from Vetted Technical Assistance Providers

SCHOOL ACTION	TECHNICAL ASSISTANCE PROVIDER
Restart a struggling school as an ACE campus	Commit
Create a new school as a district-managed campus	SEN (School Empowerment Network)
Redesign a campus with a blended learning model	Transcend Education
Redesign a rural campus with a P-20 model	Collegiate Edu-Nation

TCLAS SAF Supports: Tools and Resources



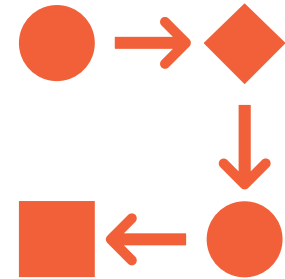
Stakeholder Engagement

Tools to **communicate** the school action to families, students, teachers, and community members and **collect input** to influence the school action.



Design and Piloting Tools

School design templates, exemplars, and best practices to support district and campus leaders in **planning a high-quality school**.



Policies and Processes

Support with developing systems and structures to **evaluate the whole school model** to ensure its ready to serve students well on Day 1.

TCLAS SAF Supports: Funding

Award notification:

September 2021



Planning Year: Redesign and Create New Schools
\$250,000

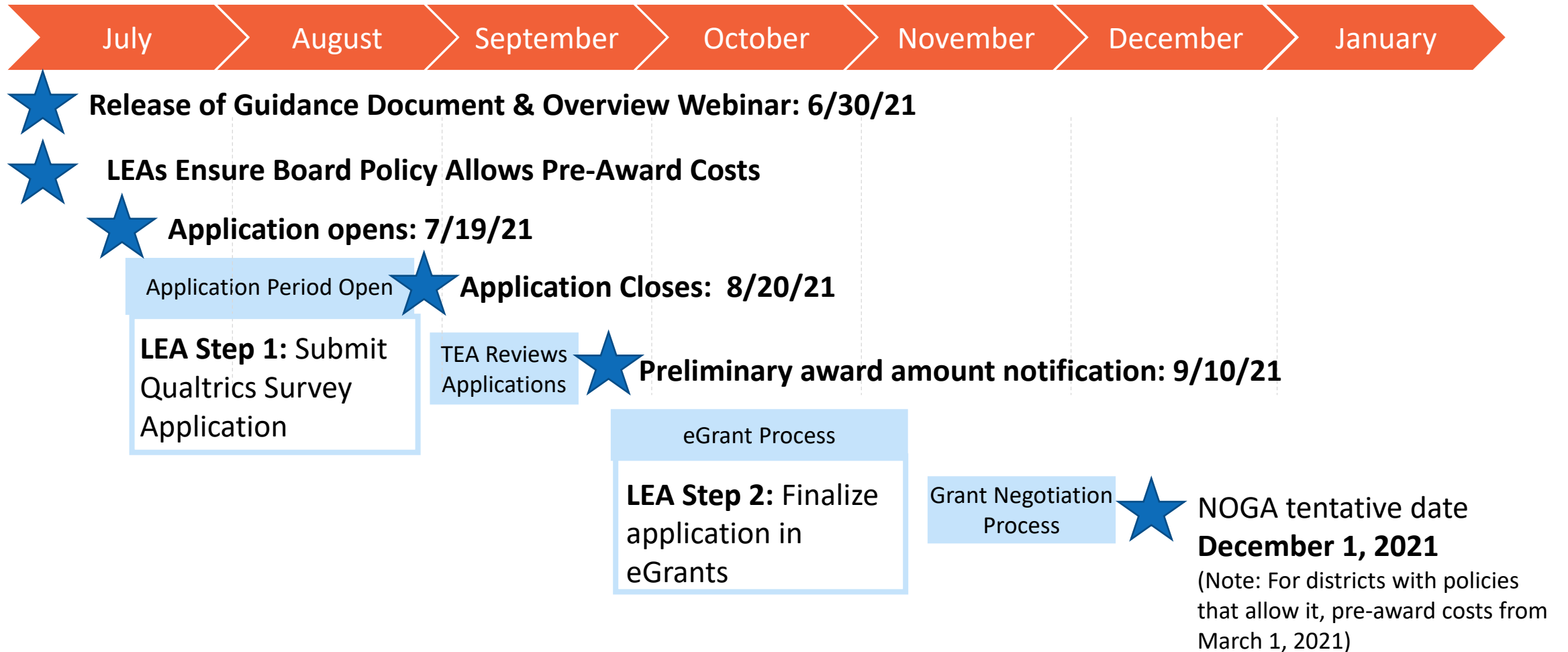
Continuation: Redesign and Create New Schools
Redesign: \$500,000
New Schools: \$1m

Implementation: ACE-designated Schools
\$750,000



TCLAS Application Process

TCLAS Application Timeline



TCLAS SAF Eligibility and Priority Points

Eligibility:

- TCLAS School Action Fund campuses must be rated C-F on the 2019 TEA Accountability Ratings
- Limited # of B campuses

Priority Points:

- Does the district have an Office of Innovation?
- Is the district percentage of students economically disadvantaged 75% or higher?
- Does the district have more than 10% of schools rated D or F on the 2019 TEA Accountability Ratings?

Agenda

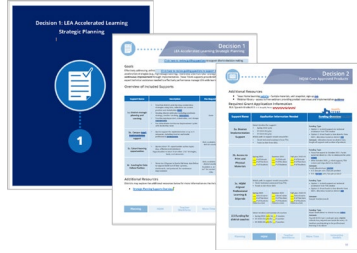
Recap: What is TCLAS?

Decision Point 10, New School Models (NSM) Deep Dive

Q&A and Next Steps

Upcoming TCLAS Support Opportunities

TCLAS Overview Webinar



Overview of **guidance document** and process for submitting a TCLAS application

June 30

Recording on [TCLAS webpage](#)

Decision Point-Specific Webinars



In depth review of **supports available** within TCLAS; LEAs should join for all interested supports

Week of July 12th, Various Time

Registration available now on [TCLAS webpage!](#)

TCLAS Office Hours



Question and answer opportunity with TEA staff about TCLAS and completing the application

Begin Week of July 26th

Registration available now on [TCLAS webpage!](#)

Visit the [TCLAS webpage](#) to register and access recordings

Call to Action: Please get in touch!



[Center for School Actions](#)

School actions are bold, whole-school models that require deep investment of time and energy.

Please be in touch to learn more and discuss your specific needs!

Laura.Hyatt@tea.texas.gov

Christopher.DeWitt@tea.texas.gov

TCLAS@tea.texas.gov

Interested in applying for TCLAS?

Let us know by
completing this
1-minute
survey!



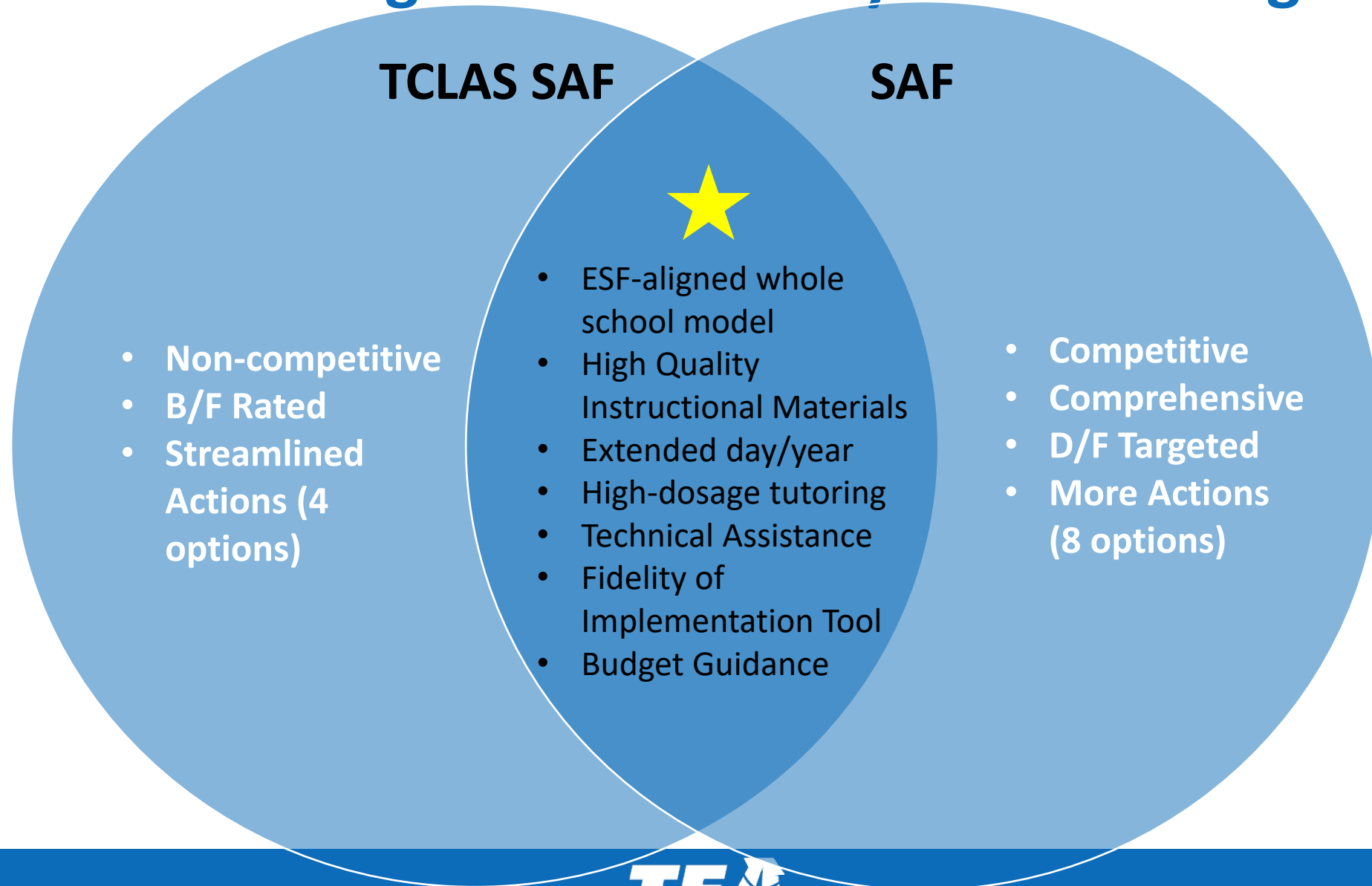
bit.ly/TCLAS-Interest-Form

Thank you!

Questions?

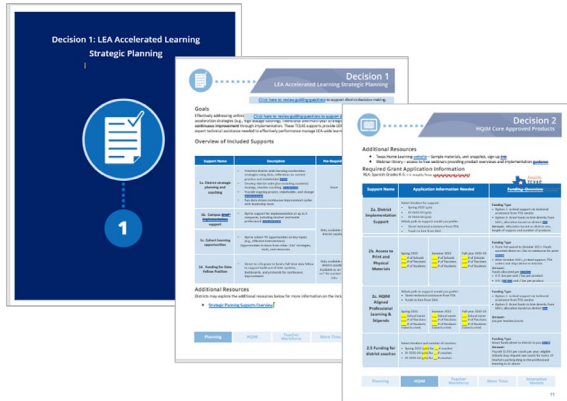
APPENDIX

TCLAS SAF Planning Grant vs SAF Cycle 5 Planning Grant



TCLAS Application Components

Guidance Document



Walks LEAs through supports available through TCLAS and guiding questions LEAs should consider before making TCLAS decisions

Budget Calculator

TCLAS Grant Calculator - LEA Inputs

Use the guidance document to understand what is included in each decision. Fill in the yellow cells below based on your district's interest in the specific TCLAS support. Based on your inputs, the calculator will determine your estimated grant award based on overall TEA available funding and capacity.

View the Guidance Doc | Print this Page | Refresh | LEAs Fill Out Cells

General Information	Amount
EA Inputs	
EA Input EA student enrollment	\$50,000
EA Input EA's opportunity	\$500,000
EA Inputs	
EA Inputs	
EA Cost per FTE per year	\$125,000

Decision Point 1: LEA Accelerated Learning Strategic Planning	2021-22	2022-23	2023-24	Notes
1a-1 Strategic Planning Support	Yes	Yes	Yes	LEAs may vary answer by year
1a-2 Does LEA want Decision 1a to support?	Yes	Yes	Yes	LEAs must participate in 1a to get access to 1d
1a-3 Estimated funding	\$200,000	\$200,000	\$200,000	In-kind Supports
Decision Point 2: High Quality Instructional Materials Core Approved Products	2021-22	2022-23	2023-24	Notes
2a-1 What type of support would LEA prefer	Select Type	Select Type	Select Type	LEAs preference for TEA awards based on availability

Calculates district TCLAS award – including both in-kind and granted funds – based on the decisions made in TCLAS

Application

Coming Soon

Qualtrics application link posted week of 7/19

This is how districts will submit their TCLAS choices to TEA



Guidance Document Dive: Decision Point 10, NSM

School Actions and Support, Pg. 42

■ 10A Actions

- Redesign a School with a Blended Learning Model
- Redesign a rural school(s) with a Collegiate Edu-Nation model
- Create a New School, LEA-Managed in an ESF-aligned model

■ Support

- 1-year Planning & 2-Year Continuation Funding
- Leadership support and coaching
- TEA-Matched Technical Assistance provider

Additional Resources:

To learn more about new school models (School Action Fund), please visit <https://www.centerforschoolactions.org/>.



Guidance Document Dive: Decision Point 10, NSM

School Actions and Support, Pg. 42

■ 10B Action

- Restart a Struggling School as an ACE Campus
- Must already be an ACE-designated campus

■ Support

- 2-Year Implementation Funding
- Leadership coaching and data monitoring
- TEA-matched Technical Assistance provider

Additional Resources:

To learn more about new school models (School Action Fund), please visit <https://www.centerforschoolactions.org/>.

Guidance Document Dive: Decision Point 10, NSM

TCLAS NSM Vetted Technical Assistance Providers

SCHOOL ACTION	TECHNICAL ASSISTANCE PROVIDER
Restart a struggling school as an ACE campus	Commit
Create a new school as a district-managed campus	SEN (School Empowerment Network)
Redesign a campus with a blended learning model	Transcend Education
Redesign a rural campus with a P-20 model	Collegiate Edu-Nation

Guidance Document Dive: Decision Point 10, NSM

Prerequisites, Pg. 43

■ Prerequisites

- Dependent on selected action, assurances, and other criteria in Program Guidelines
- For all actions:
 - Conversation with technical assistance/TEA provider completed
 - To receive 2-year Continuation / Implementation 2nd year support (ACE-designated), districts must meet Planning / 1st year requirements set by TEA
- For Create a New School: Must identify a school leader to dedicate at least 3 days/week to school design in 2021-2022
- For Redesign: Rural: LEA must have 500 or fewer students, a K-8 campus/campuses rated C-F on 2019 TEA ratings, a designated PTECH program, and a designated central office-based redesign coordinator

Guidance Document Dive: Decision Point 10, NSM

Award Calculation, Pg. 43

■ Awards

- Planning estimated to be \$250,000
- Continuation/Implementation depends on the selected action and priority points
 - Appropriate campus ratings,
 - % economically disadvantaged,
 - Presence of Innovation Office,
 - System of Great Schools district campus
- Other factors, as determined by TEA

Decision Point-Specific Webinars

Webinar Topic	Date	Time	Registration Link
Decision 1: LEA Accelerated Learning Strategic Planning	7/12/2021	12-12:45 p.m.	Register
Decision 2: HQIM Core Approved Products	7/13/2021	2-3:00 p.m.	Register
Decision 3: HQIM Supplemental Approved Products	7/14/2021	10-11:00 a.m.	Register
Decision 4: Teacher Recruitment Support	7/13/2021	9-9:45 a.m.	Register
Decision 5: Teacher Residency Program Support	7/13/2021	10-10:45 a.m.	Register
Decision 6: Tutoring Supports	7/14/2021	2-2:45 p.m.	Register
Decision 7: School Day Calendar Redesign	7/15/2021	11-11:45 a.m.	Register
Decision 8: Strong Summer Program	7/14/2021	11-11:30 a.m.	Register
Decision 9: P-TECH	7/14/2021	9-9:45 a.m.	Register
Decision 10: New School Models	7/15/2021	8-8:45 a.m.	Register